



HOW CAN MOWR FUNDS BE SPENT?



1

STAFFING

School employees who directly contribute to the improvement of K-3 early literacy

2

INSTRUCTIONAL MATERIALS

Materials and/or tools primarily used by K-3 students to improve early literacy

3

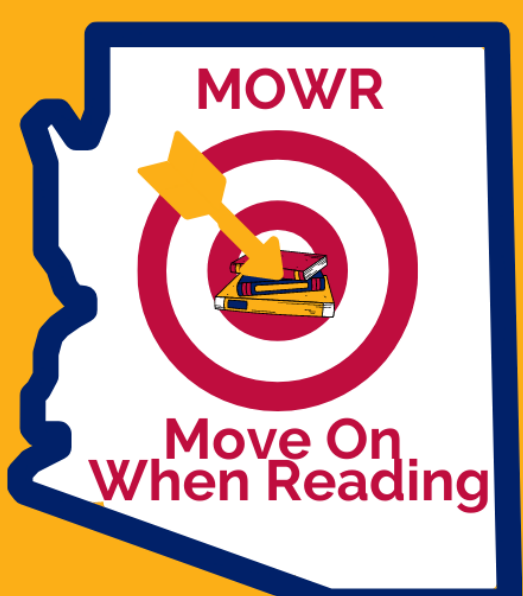
ASSESSMENT MATERIALS

Materials and/or tools used to directly screen, diagnose, and progress monitor K-3 students in reading

4

PROFESSIONAL DEVELOPMENT

Ongoing PD on reading research provided to K-3 educators directly impacting early literacy

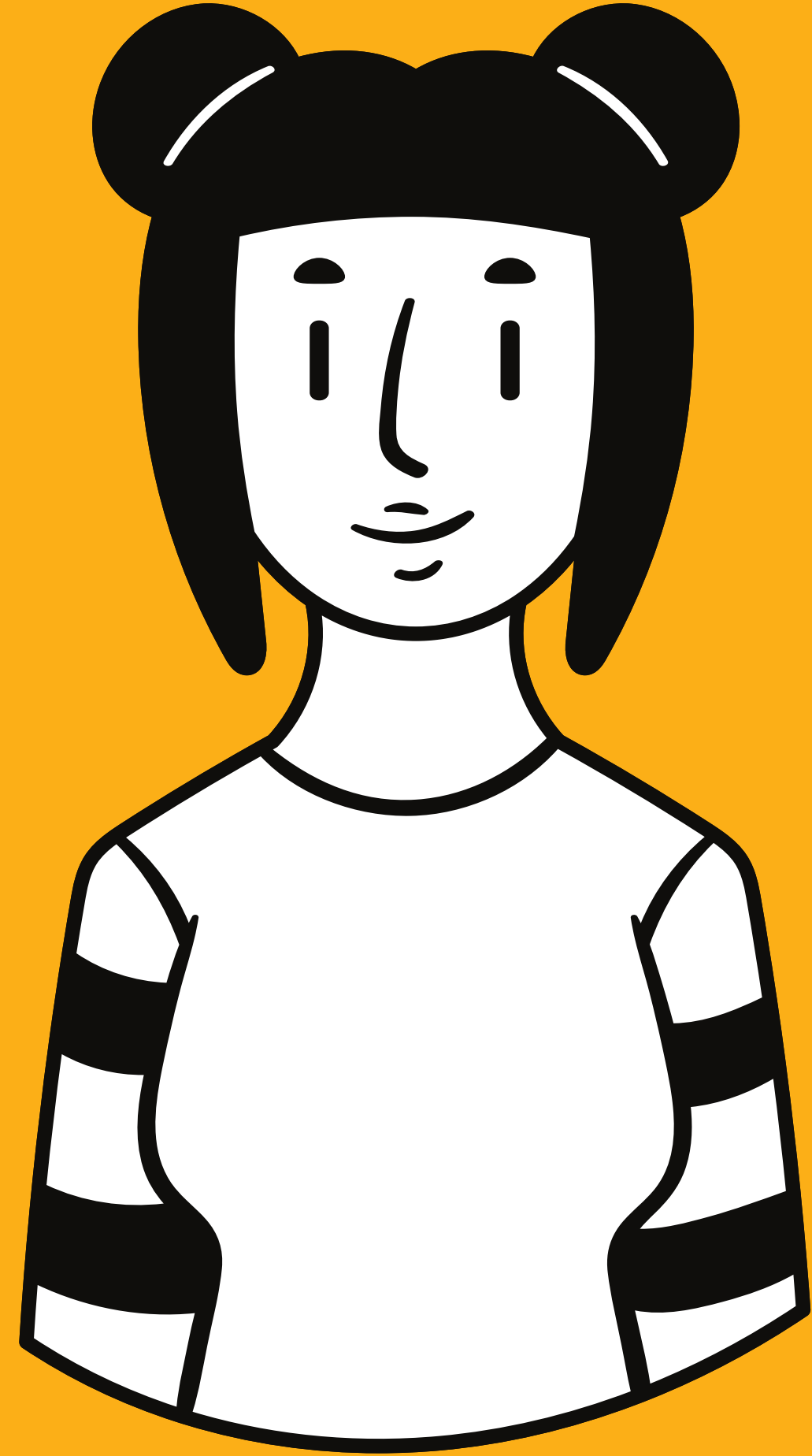


FOR MORE SPENDING INFO VISIT

[HTTPS://WWW.AZED.GOV/MOWR/FAQS/](https://www.azed.gov/mowr/faqs/)

STAFFING

+Paraprofessional
+Reading
specialist/coach



+Reading interventionist
+K-3 Gen. Ed or SPED
teachers
+Before, during, after
school reading tutor



A classroom aide's salary would only
be applicable if primary role is to
assist in reading instruction.

+ELA textbooks
+Trade books
+Core, intervention,
supplemental reading
programs/materials
+Online reading programs





Assessment Tools



- +Printed and/or online assessment tools (licenses) for K-3
- +Technology to assist with testing



Professional Development

- +Live, online, virtual PD in reading research
- +Books for book studies (research based)



Reading and writing are recursive skills, so PD can extend exclusively to writing, however must still be focused on K-3.



Early Literacy Grant Funding



For eligible grantees, ELG funds can be used to supplement MOWR funding expenses and cover the same four pots.

