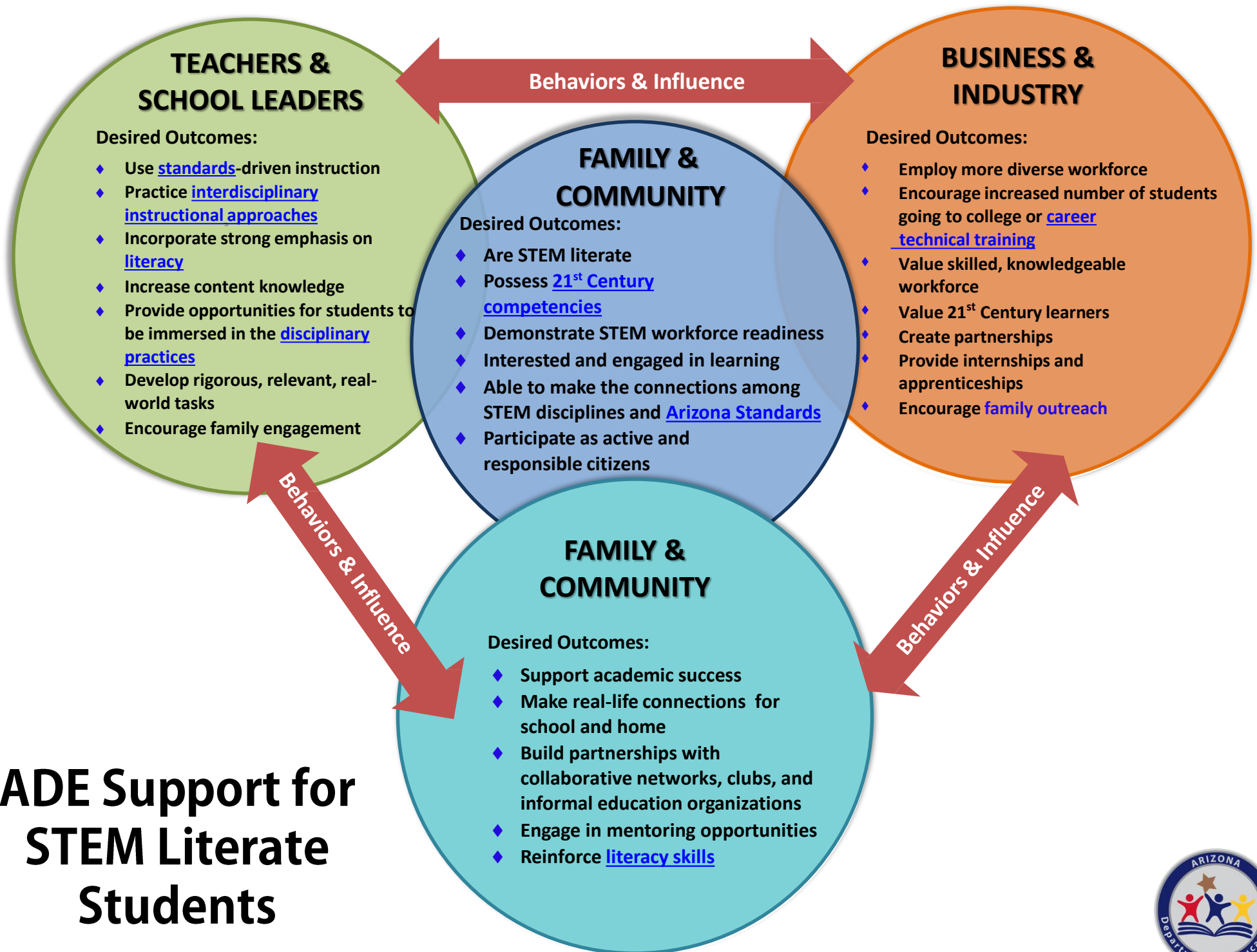


# ADE Support for STEM Literate Students



# INTERDISCIPLINARY INSTRUCTIONAL APPROACHES

-Interdisciplinary instruction entails the use and integration of methods and analytical frameworks from more than one academic discipline to examine a theme, issue, question or topic. The hallmark of interdisciplinary education is integration of notions and guiding principles from multiple disciplines to systematically form a more complete, and hopefully coherent, framework of analysis that offers a richer understanding of the issue under examination.



[Back to Stem Resources](#)

# LITERACY

-students develop the capacity to read disciplinary specific texts. Students need to read, write, and think in ways that are characteristic of academic disciplines. Students understand learning to read and reading to learn.



[Back to Stem Resources](#)

# 21<sup>ST</sup> CENTURY COMPETENCIES

-21<sup>st</sup> Century competencies are a set of intellectual behaviors that lead to productive actions required of successful individuals in the world today. These skills are often referred to as the 4Cs = creative, collaborative, critical thinking, communication.



[Back to Stem Resources](#)

# LITERACY SKILLS

-the knowledge and skills that lay the foundation for reading and writing, such as understanding basic concepts about books or other printed materials, the alphabet, and letter-sound relationships. Early literacy is the foundation for reading and writing in all academic endeavors in school.



[Back to Stem Resources](#)

# CAREER-TECHNICAL TRAINING

-(CTE) programs prepare students to enter the workforce with the academic and vocational skills needed to compete successfully in the job market. CTE courses typically include competency-based learning.



[Back to Stem Resources](#)

# FAMILY OUTREACH

-An intentional, systematic means of increasing student academic learning and performance by enhancing the quality of parent-teacher collaboration, to share ownership and accountability by working together to leverage and coordinate existing resources.



[Back to Stem Resources](#)