



Arizona Department of Education Early Childhood Education



NEWSLETTER

FALL 2015

Please share this publication with all of your preschool and related services staff (speech pathologists, occupational therapists, etc.) and other interested parties. [Past publications](#) are online.

Welcome Back!

The Early Childhood Education (ECE) unit at the Arizona Department of Education is excited to welcome you back to a new school year! For programs that have been already operating we hope you are getting settled into the year's routine. During the summer, the ECE unit was busy with some excitement of our own. Amy Corriveau, the fearless leader of the ECE unit, resigned and accepted a position with another agency that works on the behalf of young children. Amy's legacy with the unit will always be her relentless advocacy for developmentally appropriate practices to be used with young learners.

Filling Amy's shoes will be a difficult charge, but I intend to do my best to continue building on the fantastic work that has been and continues to be done. In my previous position as the Director of Early Childhood Special Education for the ECE unit, I was able to meet and work with many of you. I look forward to strengthening and expanding those relationships. For those of you whom I have yet to meet and/or work with, I am eager to build relationships with you. I am committed to working alongside my colleagues here in the ECE unit to provide strong leadership in Arizona's ECE community and support to you—the very people doing the work of caring for and educating our youngest learners.

The ECE unit provides support through our monitoring and technical assistance visits, professional development activities, and being available through phone calls and emails. The focus of the ECE unit continues to be to work with you in building high-quality inclusive programs that establish a strong foundation for children and families. If we can be of assistance to you or your program, please don't hesitate to contact us. Our individual contact information can be found on our website at www.azed.gov/earlychildhood.

Mr. Fred Rogers is quoted as saying, "I hope you're proud of yourself for the times you've said 'yes,' when all it meant was extra work for you and was seemingly helpful only to somebody else." I agree with Mr. Rogers; this is the true marker of a hero. Each day you are being asked to go above and beyond in the work you do for and on the behalf of young children; I hope you take pride in being our everyday heroes.

My sincerest wishes for your best year yet!

Nicol Russell



⇒ **Completion Reports** will be live July 1, 2015 and due September 30, 2015

⇒ Next **Gold Checkpoints** are:

- October 25, 2015
- February 5, 2016
- May 27, 2016
- July 31, 2016

1,314

Number of books
collected during the
ECE Book Drive !

A big
THANK YOU
to all ADE employees
& FFA Students who
donated books to
support children
benefiting from home
visiting!



Pilot Parents of Southern Arizona

Arizona Partners in Leadership



Through collaboration with the Institute on Disability at the University of New Hampshire, Pilot Parents of Southern Arizona is pleased to announce that the Partners in Policymaking program has been enhanced and will now be known as AZ Partners in Leadership. AZ Partners in Leadership is an innovative leadership training program that teaches people to be community leaders and to affect systems and policy change at the local, state, and national levels.

The program is designed for individuals who have a disability and for parents raising children with disabilities.

Partners provides the most current information and education about disability policy, the legislative process, and local, state and national issues that affect individuals with disabilities.

Partners' participants are people who are ready to work for long-term systems change and for change in public policy. The overall goal of the program is to foster a partnership between people who need and use services for disabilities and those who determine public policy.

Partners graduates gain the abilities to teach policymakers a new way of thinking about people with disabilities. Learn more at www.pilotparents.org

Click [HERE](#) for an informational flyer about the opportunity detailed above.

Click [HERE](#) to apply

Deadline for Application submissions is October 16, 2015

Resources

[Arizona Early Learning Standards](#)
[ECQUIP Manual](#)
[HELP Manual](#)
[Early Literacy Guide for Families](#)
[Read On Arizona](#)

Click image to view

Arizona's School Readiness Framework



Are you a Parent?
Looking for support or tips?
Understood is here for you!

The Understood Community is filled with parents and experts who are ready to help you find answers to tough questions concerning your child's learning. With the appropriate resources, parents can help children build upon their strengths and achieve their full potential.

Topics include:

Learning and Attention Issues

It's Elementary (3rd-5th)

Working with Schools

Early Learners (PreK-2nd)

Weekend Wisdom

Visit the **Understood** website [HERE](#) to learn more.



Bridging the Word Gap

Resources for families, Caregivers, and Early Learning Providers

Education is a continuum and it begins at birth. Babies brains rapidly develop through close, loving relationships with their caregivers and families. When words are present in experiences with those who love them, babies' brain development benefits greatly as well as starting them on a path to school readiness. Exposing children to language-rich environments at a very early age is critical. Differences in vocabulary begin to appear in children as young as 18 months of age and the quality of a child's language environment greatly influences future school and life success. In support, U.S. Departments of Health and Human Services and Education, in partnership with *Too Small to Fail*, are providing these key resources to families, caregivers, and early learning providers. Click below to view the free publications.

Talking is Teaching Family Guide: [English](#), [Spanish](#)

Talking is Teaching Community Provider Guide: [English](#)

Talk, Read, and Sing Together Every Day!: [English](#), [Spanish](#)

Tips for Infant & Toddler Teachers & Caregivers: [English](#), [Spanish](#)

Tips For Preschool Teachers & Other Early Childhood Education Program Providers:

[English](#), [Spanish](#)

To learn more, visit the website at <http://toosmall.org/community/resources>

368

Number of
professional
development
opportunities offered
by the Early
Childhood
Education team in
the 2014-2015 school
year

6,142

Number of
individuals who
participated in
professional
development offered
by the Early
Childhood
Education team in
the 2014-2015 school
year



27th Annual NAEHCY Conference

Rising to a Brighter Future

November 14-17, 2015

Hyatt Regency Phoenix Convention Center

122 N. 2nd St. Phoenix, AZ 85004

Issues to be discussed...

- ⇒ Basics of implementing the McKinney-Vento Act in schools
- ⇒ Collaborating with Title 1, special education and other federal programs
- ⇒ Increasing access to early childhood programs
- ⇒ Legislative and policy updates
- ⇒ Housing and homeless services collaborations
- ⇒ Helping students transition to and be successful in higher education

Continuing Education Units

Attendees may apply for credits in Education (CPE), Social Work, Counseling (LPC, CDC), and Therapy (LMFT).

Great for School District Liaisons, State Coordinators of Homeless Education, Transportation Staff, School Administrators, School Social workers, Counselors, Early Childhood Programs, and Homeless Services and Housing

To learn more & to register, click <http://naehcy.org/conference/conference>

**ARIZONA
EARLY CHILDHOOD
WORKFORCE REGISTRY**

**Become a member of the
Arizona Early Childhood
Workforce Registry**

The Registry will help you grow your skills, increase your knowledge in early childhood, and advance your career.

Registry Membership benefits include:

- Find and register for training and professional development opportunities near you*
 - Meet the annual requirements for licensing
 - Search by topic, instructor and location
- Manage your career profile*
 - Keep a record of your training and credentials in one place
 - Identify your strengths and the areas where you need more professional development
 - Make updates as you complete classes/training
- Access First Things First College Scholarships to take college classes toward a degree or credential in early childhood (only available through the Registry)*
- Share your qualifications with employers*
 - Have your education credentials verified for employers, licensing agencies

1. Go to www.azearlychildhood.org and click on the Registry tab.

2. Click on the Register Now button if you need to create an account. If you already have an account, you can log in with your User Name and Password.

Register Now

User Name

Password

Log In

Forgot your password?

Click image to view

Join the Network of ECE Professionals!

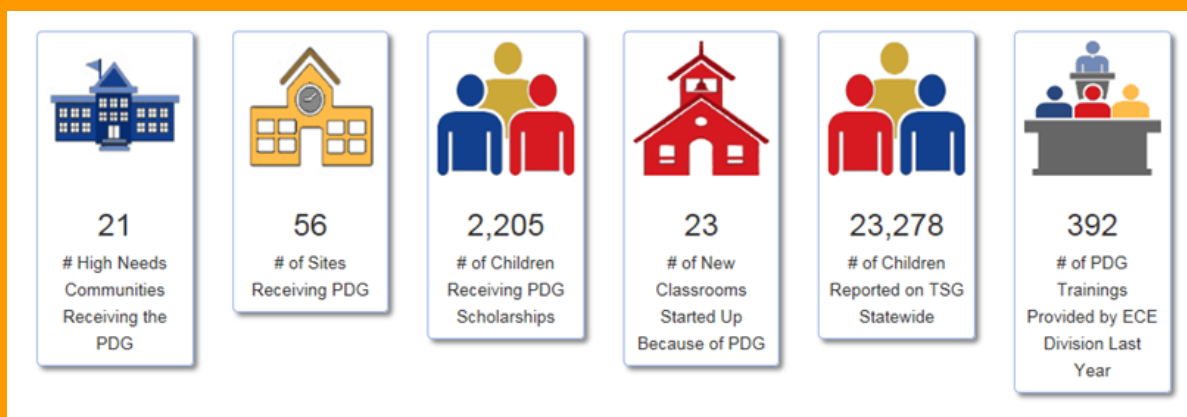
The Arizona Early Childhood Career and Professional Development Network (Network) is an integrated system of supports, focused on professional development, for all Early Childhood professionals residing in Arizona. Components of the Network include: The Professional Development Website, The Arizona Early Childhood Workforce Registry (Registry), The Arizona Workforce Knowledge and Competencies, The Arizona Career Lattice, and The Professional Development Instructor and Technical Assistance Provider Standards.

The Network was developed to be “an efficient cross-sector system that decreases duplication of efforts and increases accountability and sustainability” (<http://azearlychildhood.org/>) as well as aligning with policy areas endorsed by NAEYC. Click the image on the left to learn how to become part of the Network and visit the website at <http://azearlychildhood.org/>

Preschool Development Grant

Update

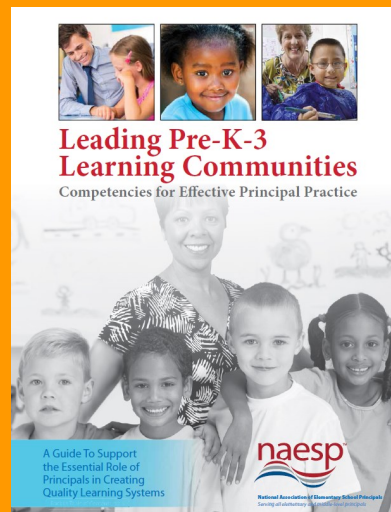
Since being awarded the Preschool Development Grant (PDG) in January 2015, the ECE team has worked diligently, through collaborative efforts alongside administrators and educational professionals within 21 identified High Needs Communities (HNC), to guide programs in effectively administering the grant. Through the PDG, funds are allocated for the provision of high quality preschool programming in center and classroom based settings within these 21 HNC. The ECE team at ADE and the programs involved have seen immense strides towards improving the quality of pre-K settings in only a short amount of time. Here, we will track the progress of the PDG within the 21 HNC and provide resources to assist those in better understanding the PDG process.



Resources

- ⇒ [U.S. Dept. of Education Preschool Development Grant Portal](#)
- ⇒ [ADE Preschool Development Grant Portal](#)
- ⇒ [Eligible Zip Code Clusters/HNC](#)
- ⇒ [Programs Awarded to Date](#)
- ⇒ [Preschool Development Grant Manual](#)

Click image to view



Have You Seen Our New System?

As many may have heard, the Arizona Department of Education (ADE) has upgraded the long-standing Calendar of Events to a new Events Management System (EMS). Aesthetically pleasing, the new EMS grants users access to an array of ADE professional offerings, including webinars, conferences, trainings/workshops, meetings, and online courses – in one convenient location. For the first time, users will have the capability to pay for events of their choice with a Visa or MasterCard as well as by check and purchase order. In order to create a more personalized experience, each user will be provided with login information following registration for an event. Users should keep their login information accessible to them as this will be the key to their personalized EMS portal. Visit the site and view the reference guide below to learn more.

[Quick Registration Reference Guide](#)

ems.azed.gov

THE KINDERGARTEN EXPERIENCE

A Professional Development Series Focusing on Evidence-based Practices in Kindergarten

The Kindergarten Experience is a series of professional development sessions targeting best practices in Kindergarten.
For Kindergarten Teachers, Paraprofessionals, Instructional Coaches, Administrators

UPCOMING CONFERENCES at Desert Willow Conference Center, Phoenix

Organization of Space & Time:

Optimizing the Learning Environment

Routines & Schedules

September 25 & 26, 2015

English Language Arts IN KINDERGARTEN

February 26 & 27, 2016

Bringing Math to Life in Kindergarten

April 22 & 23, 2016

ADDITIONAL PROFESSIONAL DEVELOPMENT OPPORTUNITIES, BEGINNING FALL 2015

- Intensive Kindergarten Experience: Small Cohort Groups exploring best practices in K
- Online Community of Learners
- Kindergarten Pilot Team: Piloting Strategies in the Field
- Online Training & Support
- Regional & On-site Professional Development



Stay Connected: Join us on Facebook The Kindergarten Project-Arizona

Email: thekindergartenexperience@gmail.com

Website Being Established: www.thekindergartenexperience.com



ARIZONA DEPARTMENT OF EDUCATION



ALESI GROUP, LLC



VIRGINIA G. PIPER CHARITABLE TRUST

To learn more about the Kindergarten Developmental Inventory or how to register for The Kindergarten Experience, click [HERE](#)



Fall into a great book!

September is Library Card Sign-up Month!

By: Holly Henley
Deputy Director, Library Services

Children who are read to and use the library perform better in school, studies show. September is Library Card Sign-up Month, a time when libraries across Arizona join with the

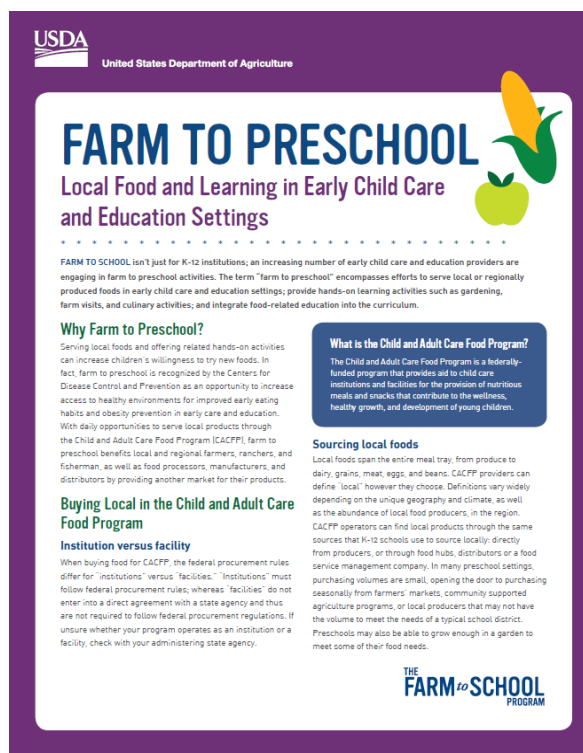
American Library Association and public libraries nationwide to make sure every student has the most important school supply of all – a free library card. To locate the closest Arizona library, visit www.azlibrary.gov/library-directory.

Resources at public libraries are available to anyone with a library card. Libraries have materials, programs and knowledgeable library staff to support students' academic achievement. Libraries offer many age-appropriate programs. Examples include:

- ⇒ preschool age children enjoy lap-sit story times and other early literacy programs to encourage school readiness;
- ⇒ older children and teens discover hands-on STEAM programs and innovative makerspaces;
- ⇒ older teens gather information and use tools to support college and career readiness; and
- ⇒ parents find parenting resources and information as well as special events for the whole family.

Farm to Preschool Program

In an effort to improve child nutrition nationwide, the Child and Adult Care Food Program (CACFP) has endorsed the Farm to Preschool program, an initiative that promotes healthy eating habits. Connecting early child care and education providers with fresh, locally-grown produce, Farm to Preschool familiarizes young children with wholesome fruits and vegetables that they will encounter at school as well as delivers related nutrition education. As a result, children's willingness to try new foods can increase, especially in regards to fresh produce. To learn more about the Farm to Preschool program, click [HERE](#)



Click image to view

Early Childhood Contact Information

**Nicol Russell, Deputy Associate Superintendent &
Head Start State Collaboration Director**
602-364-1530

Nicol.Russell@azed.gov

**TBD, Director
Early Childhood Special Education/619**
602-542-1113

Terry Doolan, Director Early Childhood
602-542-1137

Terry.Doolan@azed.gov

Evelyn Irvine, Administrative Assistant
602-364-1530

Evelyn.Irvine@azed.gov

**Juliana Panqueva, ECE Financial Program
Specialist**

602-542-8812

Juliana.Panqueva@azed.gov

Kristy Rosen, ECE Project Specialist
602-542-2790

Kristy.Rosen@azed.gov

**Lauren Zbyszinski, Professional
Development Program Specialist**
602-542-1102

Lauren.Zbyszinski@azed.gov

Maricopa, Roosevelt, Dysart, Pinal-Akimel
O'otham/Eloy

Alma Quintana, Program Specialist
602-364-1910

Alma.Quintana@azed.gov

Coconino County (West of 64)
Mohave County

Ariana Lopez, ECSE Program Specialist
602-542-4615

Ariana.Lopez@azed.gov

Cochise, Santa Cruz, Graham,

For questions on assessment and
Teaching Strategies GOLD, contact:
**Elizabeth Hamilton, ECSE Program
Specialist**

602-364-1948

Elizabeth.Hamilton@azed.gov

Greenlee County Navajo County
(South of I-40)

Lori Masseur, ECSE Program Specialist
602-542-3036

Lori.Masseur@azed.gov

Apache County (North of I-40)
Coconino County (East of 64)
Navajo County (North of I-40)

Millicent Archer, Program Specialist
602-364-1966

Millicent.Archer@azed.gov

Pima County (East), Pinal County-
Mammoth San Manuel, Picacho, Oracle,
Ray, Red Rock, Superior, Toltec

**TBD, ECSE Program
Specialist**
602-542-3160

Yuma
Santa Cruz County

Tina Sykes, Program Specialist
602-542-3183

Tina.Sykes@azed.gov

Gila County,
Maricopa County (East)
Chandler, Creighton, Fountain Hills,
Gilbert, Higley, Kyrene, Mesa, Paradise
Valley, Queen Creek, Scottsdale, Tempe

TBD, Program Specialist
602-542-3143

La Paz County, Maricopa County (South
West), Arlington, Buckeye, Gila Bend,
Laveen, Liberty, Mobile, Murphy, Palo
Verde, Phoenix, Riverside, Union, Saddle
Mountain, Sentinel, Pima County (West-
Ajo), Yuma County