



State of Arizona
Department of Education

2011-2012 State Report Card



Arizona Department of Education State Report Card, 2011-2012

Table of Contents

NAEP Assessment of Educational Progress Reading and Mathematics, 2010-2011.....	3
AIMS Results	
Grade 3 – AIMS Mathematics and Reading.....	4
Grade 4 – AIMS Mathematics, Reading, and Science.....	6
Grade 5 – AIMS Mathematics, Reading, and Writing.....	9
Grade 6 – AIMS Mathematics, Reading, and Writing.....	12
Grade 7 – AIMS Mathematics, Reading, and Writing.....	15
Grade 8 – AIMS Mathematics, Reading, and Science.....	18
Grade HS – AIMS Mathematics, Reading, Writing, and Science.....	21
Federal Accountability.....	25
School Improvement.....	26
State Accountability – A-F Letter Grades.....	27
Arizona Educators.....	29



NAEP Assessment of Educational Progress Reading and Mathematics, 2010-2011*

If you would like more information about the NAEP assessments, please go to <http://www.azed.gov/standards-development-assessment/naep/>.

State Data

Grade 4 Mathematics

Achievement	Below Basic	Basic	Proficient	Advanced
Arizona Students	23	44	29	4
White	11	40	41	8
Black	38	40	20	3
Hispanic	30	49	20	1
Asian/Pacific Islander	13	34	40	14
American Indian	45	41	13	1
Eligible for NSLP	31	47	21	2
Students w/Disability	54	31	14	1
Limited English Proficient	58	35	7	#

Participation Rate	Percent
Students w/Disability	91
Limited English Proficient	99

Reading

Achievement	Below Basic	Basic	Proficient	Advanced
Arizona Students	42	32	21	5
White	28	34	30	9
Black	53	27	15	5
Hispanic	52	32	14	2
Asian/Pacific Islander	28	30	28	14
American Indian	70	22	6	2
Eligible for NSLP	54	31	14	2
Students w/Disability	80	15	5	#
Limited English Proficient	86	12	1	#

Participation Rate	Percent
Students w/Disability	88
Limited English Proficient	99

Grade 8 Mathematics

Achievement	Below Basic	Basic	Proficient	Advanced
Arizona Students	32	37	24	7
White	17	37	34	12
Black	39	43	17	1
Hispanic	45	37	15	2
Asian/Pacific Islander	11	31	41	17
American Indian	60	28	9	3
Eligible for NSLP	43	38	17	3
Students w/Disability	76	19	4	1
Limited English Proficient	‡	‡	‡	‡

Participation Rate	Percent
Students w/Disability	89
Limited English Proficient	‡

Reading

Achievement	Below Basic	Basic	Proficient	Advanced
Arizona Students	29	43	26	2
White	18	42	36	4
Black	42	40	18	1
Hispanic	37	45	17	#
Asian/Pacific Islander	19	46	27	8
American Indian	50	36	13	1
Eligible for NSLP	39	44	16	1
Students w/Disability	74	23	3	#
Limited English Proficient	‡	‡	‡	‡

Participation Rate	Percent
Students w/Disability	89
Limited English Proficient	‡

*The NAEP Mathematics and Reading are administered biennially; therefore, the last administration was 2010-2011.

Notes: Numbers are rounded. Rows may not add up to 100% due to rounding. NAEP does not disaggregate data to the district level.

‡ The Arizona Grade 8 ELL sample size is insufficient to permit a reliable estimate according to the National Center for Education Statistics.

The ADE is working with NCES/NAEP on an additional sampling procedure for this student population so ADE can continue to report on Arizona Grade 8 ELL students in the future.

Rounds to zero.



AIMS Results

The following tables show AIMS results for the past two years. Results are shown as a percentage of students at each achievement level. Also shown is the percent of students tested. Writing is tested in grades 5, 6, 7, and high school only. Science is tested in grades 4, 8, and high school only. Note that the subgroups of migrant and gender are subgroups for reporting purposes only and were not among the required subgroups for adequate yearly progress (AYP) determinations.

Grade 3 – AIMS Mathematics

AIMS Mathematics - Grade 3						
Subgroup	School Year	Percent of Students Tested	Percent of Students in State at Each Achievement Level			
			Exceeds	Meets	Approaches	Falls Far Below
All Students	2011	99	25	44	22	9
	2012	99	28	43	22	7
African American	2011	99	15	43	28	14
	2012	99	17	43	29	11
American Indian/Native Alaskan	2011	99	9	36	34	21
	2012	99	11	39	35	15
Asian/Pacific Islander	2011	100	47	38	11	4
	2012	100	49	38	10	3
Hispanic	2011	100	17	45	27	12
	2012	100	19	44	27	10
White	2011	99	36	44	15	5
	2012	99	39	42	14	4
Students with Disabilities	2011	99	11	29	30	29
	2012	99	13	30	31	26
Limited English Proficient	2011	99	9	32	35	24
	2012	100	10	40	36	14
Economically Disadvantaged	2011	100	16	44	27	13
	2012	100	19	43	27	10
Migrant	2011	99	8	43	33	16
	2012	99	13	41	35	12
Male	2011	99	26	43	21	10
	2012	99	29	42	21	8
Female	2011	99	25	45	22	8
	2012	100	28	44	22	7



Grade 3 – AIMS Reading

AIMS Reading - Grade 3						
Subgroup	School Year	Percent of Students Tested	Percent of Students in State at Each Achievement Level			
			Exceeds	Meets	Approaches	Falls Far Below
All Students	2011	99	14	63	18	5
	2012	99	15	61	20	4
African American	2011	99	9	62	22	7
	2012	99	10	61	25	5
American Indian/Native Alaskan	2011	99	4	53	33	10
	2012	99	4	52	37	7
Asian/Pacific Islander	2011	100	26	63	9	3
	2012	100	29	59	10	2
Hispanic	2011	100	7	62	24	6
	2012	100	8	60	27	5
White	2011	99	22	65	11	3
	2012	99	24	63	11	2
Students with Disabilities	2011	99	6	37	34	23
	2012	99	6	36	41	18
Limited English Proficient	2011	99	3	41	40	16
	2012	100	2	50	40	8
Economically Disadvantaged	2011	100	8	61	24	7
	2012	100	9	60	26	5
Migrant	2011	99	4	53	32	11
	2012	99	4	50	38	9
Male	2011	99	12	61	20	6
	2012	99	13	60	22	5
Female	2011	99	16	65	16	3
	2012	100	18	63	17	2



Grade 4 – AIMS Mathematics

AIMS Mathematics – Grade 4						
Subgroup	School Year	Percent of Students Tested	Percent of Students in State at Each Achievement Level			
			Exceeds	Meets	Approaches	Falls Far Below
All Students	2011	99	28	39	20	14
	2012	100	29	39	20	12
African American	2011	99	17	36	24	23
	2012	99	17	40	24	18
American Indian/Native Alaskan	2011	99	12	31	28	29
	2012	99	11	33	31	25
Asian/Pacific Islander	2011	100	53	32	10	5
	2012	100	54	31	10	4
Hispanic	2011	100	19	39	24	17
	2012	100	20	40	24	15
White	2011	99	38	40	15	8
	2012	99	39	40	14	7
Students with Disabilities	2011	99	11	24	24	40
	2012	99	11	25	27	37
Limited English Proficient	2011	100	13	35	28	24
	2012	100	11	36	31	22
Economically Disadvantaged	2011	100	19	38	24	19
	2012	100	20	39	25	16
Migrant	2011	99	17	33	25	25
	2012	98	21	30	30	19
Male	2011	99	28	37	20	15
	2012	99	29	38	20	13
Female	2011	99	28	40	20	12
	2012	100	29	41	20	10



Grade 4 – AIMS Reading

AIMS Reading – Grade 4						
Subgroup	School Year	Percent of Students Tested	Percent of Students in State at Each Achievement Level			
			Exceeds	Meets	Approaches	Falls Far Below
All Students	2011	99	13	63	19	4
	2012	100	13	64	19	4
African American	2011	99	7	61	26	6
	2012	99	7	62	26	5
American Indian/Native Alaskan	2011	99	3	54	35	8
	2012	99	3	53	36	8
Asian/Pacific Islander	2011	100	27	61	10	2
	2012	100	25	64	9	1
Hispanic	2011	100	6	63	26	5
	2012	100	6	63	26	5
White	2011	99	21	65	11	2
	2012	99	20	67	11	2
Students with Disabilities	2011	99	5	38	39	18
	2012	99	5	38	40	18
Limited English Proficient	2011	100	2	55	35	7
	2012	100	1	52	39	8
Economically Disadvantaged	2011	100	6	62	26	6
	2012	100	6	62	26	6
Migrant	2011	99	3	52	38	7
	2012	98	3	53	32	12
Male	2011	99	12	61	22	5
	2012	100	11	62	22	5
Female	2011	99	15	66	17	3
	2012	100	14	67	17	3



Grade 4 – AIMS Science

AIMS Science – Grade 4						
Subgroup	School Year	Percent of Students Tested	Percent of Students in State at Each Achievement Level			
			Exceeds	Meets	Approaches	Falls Far Below
All Students	2011	99	32	30	22	16
	2012	99	33	32	20	15
African American	2011	99	21	29	27	23
	2012	99	21	33	26	20
American Indian/Native Alaskan	2011	99	11	24	33	32
	2012	99	11	27	31	31
Asian/Pacific Islander	2011	100	53	26	13	8
	2012	100	53	28	12	7
Hispanic	2011	99	18	30	30	23
	2012	100	18	33	27	22
White	2011	99	49	30	14	7
	2012	99	50	31	12	6
Students with Disabilities	2011	99	14	22	26	37
	2012	99	15	24	24	37
Limited English Proficient	2011	100	8	24	33	35
	2012	100	6	25	34	35
Economically Disadvantaged	2011	99	19	30	29	23
	2012	100	20	33	26	21
Migrant	2011	99	8	21	31	40
	2012	99	7	25	34	34
Male	2011	99	34	29	21	16
	2012	99	34	31	19	16
Female	2011	99	31	31	23	15
	2012	99	31	33	21	14



Grade 5 – AIMS Mathematics

AIMS Mathematics - Grade 5						
Subgroup	School Year	Percent of Students Tested	Percent of Students in State at Each Achievement Level			
			Exceeds	Meets	Approaches	Falls Far Below
All Students	2011	100	22	42	19	16
	2012	100	24	41	20	15
African American	2011	99	14	38	23	25
	2012	99	13	38	24	25
American Indian/Native Alaskan	2011	99	8	33	28	31
	2012	99	8	34	30	28
Asian/Pacific Islander	2011	100	45	39	9	7
	2012	100	50	35	10	5
Hispanic	2011	100	14	42	24	21
	2012	100	16	41	25	19
White	2011	99	32	45	14	9
	2012	99	33	43	15	8
Students with Disabilities	2011	99	7	23	22	48
	2012	99	7	23	23	47
Limited English Proficient	2011	100	9	31	26	34
	2012	100	5	29	32	33
Economically Disadvantaged	2011	100	13	41	24	22
	2012	100	15	40	25	20
Migrant	2011	99	7	42	24	27
	2012	99	16	33	26	26
Male	2011	99	23	41	19	17
	2012	99	25	39	20	16
Female	2011	99	21	44	20	14
	2012	100	23	44	21	13



Grade 5 – AIMS Reading

AIMS Reading - Grade 5						
Subgroup	School Year	Percent of Students Tested	Percent of Students in State at Each Achievement Level			
			Exceeds	Meets	Approaches	Falls Far Below
All Students	2011	100	11	69	15	5
	2012	100	13	67	16	5
African American	2011	99	7	66	20	7
	2012	99	7	63	23	7
American Indian/Native Alaskan	2011	99	3	58	30	10
	2012	99	4	56	31	9
Asian/Pacific Islander	2011	100	22	68	7	3
	2012	100	24	65	8	2
Hispanic	2011	100	6	67	20	7
	2012	100	7	66	21	6
White	2011	99	16	72	9	3
	2012	99	19	69	9	3
Students with Disabilities	2011	99	3	39	34	24
	2012	99	4	37	36	23
Limited English Proficient	2011	100	3	51	32	15
	2012	99	1	49	38	12
Economically Disadvantaged	2011	100	6	66	21	7
	2012	100	7	65	21	6
Migrant	2011	99	3	59	27	11
	2012	99	4	55	32	9
Male	2011	99	9	67	17	7
	2012	99	10	65	18	6
Female	2011	99	13	71	13	4
	2012	100	15	68	14	3



Grade 5 – AIMS Writing

AIMS Writing - Grade 5						
Subgroup	School Year	Percent of Students Tested	Percent of Students in State at Each Achievement Level			
			Exceeds	Meets	Approaches	Falls Far Below
All Students	2011	98	5	52	36	7
	2012	98	4	54	35	8
African American	2011	97	3	45	41	10
	2012	97	2	44	42	12
American Indian/Native Alaskan	2011	98	1	33	52	14
	2012	98	1	34	51	15
Asian/Pacific Islander	2011	98	13	65	18	4
	2012	99	11	67	17	4
Hispanic	2011	98	2	44	44	10
	2012	98	1	45	43	10
White	2011	98	8	61	26	4
	2012	98	6	65	25	4
Students with Disabilities	2011	90	1	17	48	34
	2012	91	1	19	46	34
Limited English Proficient	2011	98	1	29	52	18
	2012	98	0	21	60	19
Economically Disadvantaged	2011	98	2	43	44	10
	2012	98	1	44	43	11
Migrant	2011	99	1	37	44	17
	2012	97	2	35	48	16
Male	2011	99	3	45	41	10
	2012	98	3	48	39	11
Female	2011	99	7	59	30	4
	2012	99	4	60	31	5



Grade 6 – AIMS Mathematics

AIMS Mathematics - Grade 6						
Subgroup	School Year	Percent of Students Tested	Percent of Students in State at Each Achievement Level			
			Exceeds	Meets	Approaches	Falls Far Below
All Students	2011	99	29	32	20	19
	2012	99	28	35	22	15
African American	2011	99	18	30	25	27
	2012	99	19	32	27	22
American Indian/Native Alaskan	2011	99	12	26	26	35
	2012	99	11	29	31	29
Asian/Pacific Islander	2011	100	55	25	12	8
	2012	100	55	28	11	6
Hispanic	2011	100	20	32	25	24
	2012	100	19	35	26	19
White	2011	99	39	34	16	11
	2012	99	39	36	17	9
Students with Disabilities	2011	99	7	16	20	57
	2012	99	7	18	24	51
Limited English Proficient	2011	100	18	30	25	28
	2012	99	10	27	32	31
Economically Disadvantaged	2011	100	19	31	25	25
	2012	100	19	35	26	20
Migrant	2011	99	16	29	24	31
	2012	99	19	32	25	24
Male	2011	99	28	30	20	21
	2012	99	29	33	21	17
Female	2011	99	29	34	21	16
	2012	99	28	37	23	13



Grade 6 – AIMS Reading

AIMS Reading - Grade 6						
Subgroup	School Year	Percent of Students Tested	Percent of Students in State at Each Achievement Level			
			Exceeds	Meets	Approaches	Falls Far Below
All Students	2011	99	10	72	13	5
	2012	99	12	69	15	3
African American	2011	99	6	69	19	6
	2012	99	8	67	20	5
American Indian/Native Alaskan	2011	99	3	63	25	10
	2012	99	3	62	29	6
Asian/Pacific Islander	2011	100	21	69	6	4
	2012	100	27	64	8	2
Hispanic	2011	100	5	71	18	6
	2012	100	6	68	21	4
White	2011	99	15	76	8	2
	2012	99	19	71	8	2
Students with Disabilities	2011	99	3	38	34	25
	2012	99	4	38	41	17
Limited English Proficient	2011	100	4	65	22	9
	2012	99	3	52	37	9
Economically Disadvantaged	2011	100	5	70	19	7
	2012	100	6	68	21	5
Migrant	2011	99	2	62	27	9
	2012	99	5	61	23	12
Male	2011	99	8	70	16	6
	2012	99	10	68	18	4
Female	2011	99	11	74	11	3
	2012	99	15	71	13	2



Grade 6 – AIMS Writing

AIMS Writing – Grade 6						
Subgroup	School Year	Percent of Students Tested	Percent of Students in State at Each Achievement Level			
			Exceeds	Meets	Approaches	Falls Far Below
All Students	2011	98	8	50	31	12
	2012	98	8	50	30	12
African American	2011	97	5	45	34	16
	2012	98	6	46	31	16
American Indian/Native Alaskan	2011	97	2	35	42	21
	2012	97	2	33	42	23
Asian/Pacific Islander	2011	98	21	58	15	6
	2012	98	22	58	14	6
Hispanic	2011	98	3	43	38	15
	2012	98	3	44	38	16
White	2011	98	12	59	23	7
	2012	98	13	58	22	7
Students with Disabilities	2011	90	1	15	34	49
	2012	89	1	16	34	48
Limited English Proficient	2011	98	2	38	40	20
	2012	98	1	25	44	29
Economically Disadvantaged	2011	98	3	42	38	17
	2012	98	3	43	37	17
Migrant	2011	99	1	35	48	17
	2012	99	2	34	39	25
Male	2011	99	5	44	35	16
	2012	98	5	44	34	16
Female	2011	99	10	56	26	7
	2012	98	11	56	26	7



Grade 7 – AIMS Mathematics

AIMS Mathematics - Grade 7						
Subgroup	School Year	Percent of Students Tested	Percent of Students in State at Each Achievement Level			
			Exceeds	Meets	Approaches	Falls Far Below
All Students	2011	99	26	37	18	19
	2012	99	31	34	18	17
African American	2011	99	16	36	22	27
	2012	99	19	33	24	24
American Indian/Native Alaskan	2011	99	9	29	23	38
	2012	99	12	27	26	35
Asian/Pacific Islander	2011	100	53	29	9	9
	2012	100	60	24	8	8
Hispanic	2011	99	16	37	21	25
	2012	99	20	35	23	23
White	2011	99	36	39	14	11
	2012	99	43	34	13	10
Students with Disabilities	2011	99	5	18	18	59
	2012	99	7	17	19	56
Limited English Proficient	2011	99	16	37	21	26
	2012	99	18	30	22	30
Economically Disadvantaged	2011	99	16	36	22	26
	2012	99	20	34	22	23
Migrant	2011	99	13	31	20	37
	2012	100	13	25	26	37
Male	2011	99	26	36	17	21
	2012	99	31	32	18	19
Female	2011	99	26	39	19	17
	2012	99	31	35	19	15



Grade 7 – AIMS Reading

AIMS Reading - Grade 7						
Subgroup	School Year	Percent of Students Tested	Percent of Students in State at Each Achievement Level			
			Exceeds	Meets	Approaches	Falls Far Below
All Students	2011	99	13	70	14	3
	2012	99	13	72	13	2
African American	2011	99	8	69	19	4
	2012	99	8	72	17	2
American Indian/Native Alaskan	2011	99	4	62	28	6
	2012	99	4	65	28	4
Asian/Pacific Islander	2011	99	28	63	7	2
	2012	100	29	63	6	2
Hispanic	2011	99	7	70	19	3
	2012	100	7	73	18	2
White	2011	99	19	71	8	1
	2012	99	19	72	7	1
Students with Disabilities	2011	99	4	40	42	15
	2012	99	4	41	44	10
Limited English Proficient	2011	99	6	68	21	5
	2012	99	6	65	26	4
Economically Disadvantaged	2011	99	7	69	20	4
	2012	100	7	72	19	2
Migrant	2011	99	4	62	27	8
	2012	100	2	62	32	4
Male	2011	99	11	68	17	4
	2012	99	11	71	16	2
Female	2011	99	15	72	12	1
	2012	99	15	73	10	1



Grade 7 – AIMS Writing

AIMS Writing - Grade 7						
Subgroup	School Year	Percent of Students Tested	Percent of Students in State at Each Achievement Level			
			Exceeds	Meets	Approaches	Falls Far Below
All Students	2011	98	6	49	34	11
	2012	98	6	48	35	11
African American	2011	98	4	44	38	14
	2012	97	4	42	40	15
American Indian/Native Alaskan	2011	97	1	30	46	23
	2012	97	1	30	46	23
Asian/Pacific Islander	2011	98	19	57	18	6
	2012	99	19	56	20	5
Hispanic	2011	98	3	43	40	14
	2012	98	3	41	42	14
White	2011	98	9	57	27	7
	2012	98	8	57	28	7
Students with Disabilities	2011	89	1	11	38	50
	2012	89	0	11	39	49
Limited English Proficient	2011	97	3	41	40	16
	2012	97	2	35	43	20
Economically Disadvantaged	2011	98	3	41	41	16
	2012	98	2	40	42	16
Migrant	2011	99	2	36	39	22
	2012	99	1	30	46	23
Male	2011	99	4	42	38	15
	2012	98	4	41	40	16
Female	2011	99	8	56	29	7
	2012	98	8	55	31	6



Grade 8 – AIMS Mathematics

AIMS Mathematics - Grade 8						
Subgroup	School Year	Percent of Students Tested	Percent of Students in State at Each Achievement Level			
			Exceeds	Meets	Approaches	Falls Far Below
All Students	2011	99	20	37	14	29
	2012	99	26	34	13	27
African American	2011	99	11	33	16	41
	2012	99	16	31	14	39
American Indian/Native Alaskan	2011	98	7	25	17	51
	2012	99	10	28	15	47
Asian/Pacific Islander	2011	100	48	32	8	13
	2012	100	56	26	6	12
Hispanic	2011	99	12	34	17	38
	2012	99	17	32	15	35
White	2011	99	28	41	12	19
	2012	99	35	37	11	17
Students with Disabilities	2011	98	5	13	10	72
	2012	98	6	14	11	69
Limited English Proficient	2011	99	12	34	17	38
	2012	99	17	30	13	39
Economically Disadvantaged	2011	99	11	33	16	39
	2012	99	16	32	15	36
Migrant	2011	99	5	28	18	49
	2012	99	13	30	14	43
Male	2011	99	21	35	14	31
	2012	99	26	32	13	29
Female	2011	99	19	38	15	27
	2012	99	25	35	13	26



Grade 8 – AIMS Reading

AIMS Reading - Grade 8						
Subgroup	School Year	Percent of Students Tested	Percent of Students in State at Each Achievement Level			
			Exceeds	Meets	Approaches	Falls Far Below
All Students	2011	99	9	64	19	8
	2012	99	6	67	18	8
African American	2011	99	4	60	24	12
	2012	99	4	63	23	11
American Indian/ Native Alaskan	2011	98	2	48	32	18
	2012	99	2	50	33	16
Asian/Pacific Islander	2011	100	19	65	10	6
	2012	100	15	70	9	6
Hispanic	2011	99	4	60	25	11
	2012	99	3	63	24	11
White	2011	99	13	70	12	5
	2012	99	9	74	12	5
Students with Disabilities	2011	99	2	26	33	38
	2012	98	3	28	32	37
Limited English Proficient	2011	99	3	60	25	12
	2012	99	2	58	24	15
Economically Disadvantaged	2011	99	4	59	25	12
	2012	99	3	61	24	11
Migrant	2011	99	2	44	30	23
	2012	99	2	55	24	19
Male	2011	99	6	61	21	11
	2012	99	5	64	20	11
Female	2011	99	11	68	16	5
	2012	99	7	71	16	5



Grade 8 – AIMS Science

AIMS Science - Grade 8						
Subgroup	School Year	Percent of Students Tested	Percent of Students in State at Each Achievement Level			
			Exceeds	Meets	Approaches	Falls Far Below
All Students	2011	99	41	25	17	17
	2012	99	42	28	14	16
African American	2011	99	27	26	21	26
	2012	99	29	31	17	23
American Indian/ Native Alaskan	2011	99	17	23	25	36
	2012	99	17	28	22	33
Asian/Pacific Islander	2011	99	62	19	9	9
	2012	100	65	20	6	9
Hispanic	2011	99	25	27	23	25
	2012	99	27	31	19	23
White	2011	99	57	23	12	8
	2012	99	58	26	9	7
Students with Disabilities	2011	99	10	17	20	53
	2012	98	12	21	17	50
Limited English Proficient	2011	99	21	27	24	27
	2012	99	24	28	19	29
Economically Disadvantaged	2011	99	26	26	22	26
	2012	99	28	31	18	23
Migrant	2011	99	10	20	23	47
	2012	100	18	31	19	32
Male	2011	98	41	24	16	19
	2012	99	43	27	13	17
Female	2011	98	40	26	18	16
	2012	100	40	29	15	15



Grade HS – AIMS Mathematics

AIMS Mathematics - High School						
Subgroup	School Year	Percent of Students Tested	Percent of Students in State at Each Achievement Level			
			Exceeds	Meets	Approaches	Falls Far Below
All Students	2011	98	23	41	12	24
	2012	98	23	41	12	24
African American	2011	98	14	39	14	34
	2012	98	12	40	15	33
American Indian/Native Alaskan	2011	97	9	32	16	44
	2012	97	8	33	17	42
Asian/Pacific Islander	2011	98	49	35	7	10
	2012	99	50	32	6	12
Hispanic	2011	98	13	39	15	33
	2012	99	12	40	15	32
White	2011	99	32	43	10	15
	2012	99	32	44	9	15
Students with Disabilities	2011	97	3	18	11	68
	2012	97	4	17	11	68
Limited English Proficient	2011	98	11	37	15	37
	2012	98	10	36	16	38
Economically Disadvantaged	2011	98	13	39	15	34
	2012	99	12	39	15	33
Migrant	2011	99	8	35	16	42
	2012	99	6	34	14	46
Male	2011	99	23	39	12	26
	2012	98	23	40	12	25
Female	2011	99	23	43	12	22
	2012	99	22	43	13	22



Grade HS – AIMS Reading

AIMS Reading - High School						
Subgroup	School Year	Percent of Students Tested	Percent of Students in State at Each Achievement Level			
			Exceeds	Meets	Approaches	Falls Far Below
All Students	2011	99	13	67	16	4
	2012	99	12	70	15	3
African American	2011	98	7	65	21	7
	2012	98	7	68	21	4
American Indian/ Native Alaskan	2011	97	3	58	30	9
	2012	97	3	61	29	6
Asian/Pacific Islander	2011	99	26	60	9	4
	2012	98	24	63	11	3
Hispanic	2011	98	6	65	23	6
	2012	99	6	69	21	4
White	2011	99	20	70	8	2
	2012	99	19	71	8	1
Students with Disabilities	2011	97	4	35	39	22
	2012	97	4	36	43	17
Limited English Proficient	2011	98	3	63	26	8
	2012	98	3	64	27	6
Economically Disadvantaged	2011	99	6	64	23	7
	2012	99	6	68	22	4
Migrant	2011	99	2	47	37	14
	2012	98	2	59	32	8
Male	2011	99	12	66	16	5
	2012	98	11	68	17	4
Female	2011	99	14	67	15	3
	2012	99	14	71	13	2



Grade HS – AIMS Writing

AIMS Writing - High School						
Subgroup	School Year	Percent of Students Tested	Percent of Students in State at Each Achievement Level			
			Exceeds	Meets	Approaches	Falls Far Below
All Students	2011	97	5	65	23	7
	2012	97	4	68	22	6
African American	2011	96	3	59	29	9
	2012	96	2	63	27	8
American Indian/Native Alaskan	2011	95	1	45	40	14
	2012	95	1	49	37	13
Asian/Pacific Islander	2011	98	16	64	13	7
	2012	97	13	69	12	6
Hispanic	2011	97	2	57	31	9
	2012	97	2	61	30	7
White	2011	98	8	74	15	3
	2012	98	6	77	14	3
Students with Disabilities	2011	86	0	20	43	37
	2012	86	0	21	45	34
Limited English Proficient	2011	94	1	51	34	13
	2012	94	1	52	35	12
Economically Disadvantaged	2011	97	2	56	32	10
	2012	97	2	59	31	9
Migrant	2011	99	0	42	36	23
	2012	97	1	43	40	17
Male	2011	97	4	60	26	9
	2012	97	3	64	26	7
Female	2011	97	7	69	20	4
	2012	98	5	72	19	4



Grade HS – AIMS Science

AIMS Science - High School						
Subgroup	School Year	Percent of Students Tested	Percent of Students in State at Each Achievement Level			
			Exceeds	Meets	Approaches	Falls Far Below
All Students	2011	71	20	25	16	40
	2012	69	23	22	17	38
African American	2011	78	13	21	16	50
	2012	78	15	20	18	47
American Indian/Native Alaskan	2011	80	8	17	16	60
	2012	80	9	16	19	56
Asian/Pacific Islander	2011	59	34	24	13	28
	2012	56	37	23	12	28
Hispanic	2011	78	11	21	17	51
	2012	75	13	20	19	48
White	2011	64	31	29	15	25
	2012	63	34	26	16	24
Students with Disabilities	2011	79	5	14	10	71
	2012	78	6	13	11	70
Limited English Proficient	2011	80	8	18	17	57
	2012	81	9	16	17	57
Economically Disadvantaged	2011	77	11	22	17	50
	2012	76	14	19	18	49
Migrant	2011	89	6	11	14	68
	2012	90	6	15	15	64
Male	2011	89	21	24	15	40
	2012	70	24	22	16	39
Female	2011	87	18	26	17	39
	2012	68	22	23	19	37



Federal Accountability

Annual Measureable Objectives (AMOs). The AMOs for school year 2011-2012 were calculated the same way as in past years using the confidence level and Safe Harbor. Please see this page

<http://www.azed.gov/eseawaiver/> for a detailed description of these procedures.

2012 State-Level Accountability*						
Subgroup	Reading/Language Arts		Mathematics		Additional Academic Indicators	
	Percent Tested	Percent Meets and Exceeds	Percent Tested	Percent Meets and Exceeds	Graduation Rate	Attendance Rate
	Goal: 100%	Goal: 60%	Goal: 100%	Goal: 60%	Goal: 85%	Goal: 92%
All Students	99	79	99	65	78	95
African American	99	72	99	53	74	95
American Indian/ Native Alaskan	99	60	99	42	62	92
Asian/Pacific Islander	100	89	100	84	88	97
Hispanic	99	72	99	56	72	94
White	99	88	99	76	85	95
Students with Disabilities	99	40	99	29	67	93
Limited English Proficient	99	58	99	44	25	95
Economically Disadvantaged	99	71	99	56	73	94
Migrant	99	60	99	46	67	95
Male	99	75	99	63	74	95
Female	99	83	99	66	81	95

*All data are based on students enrolled for a full academic year.

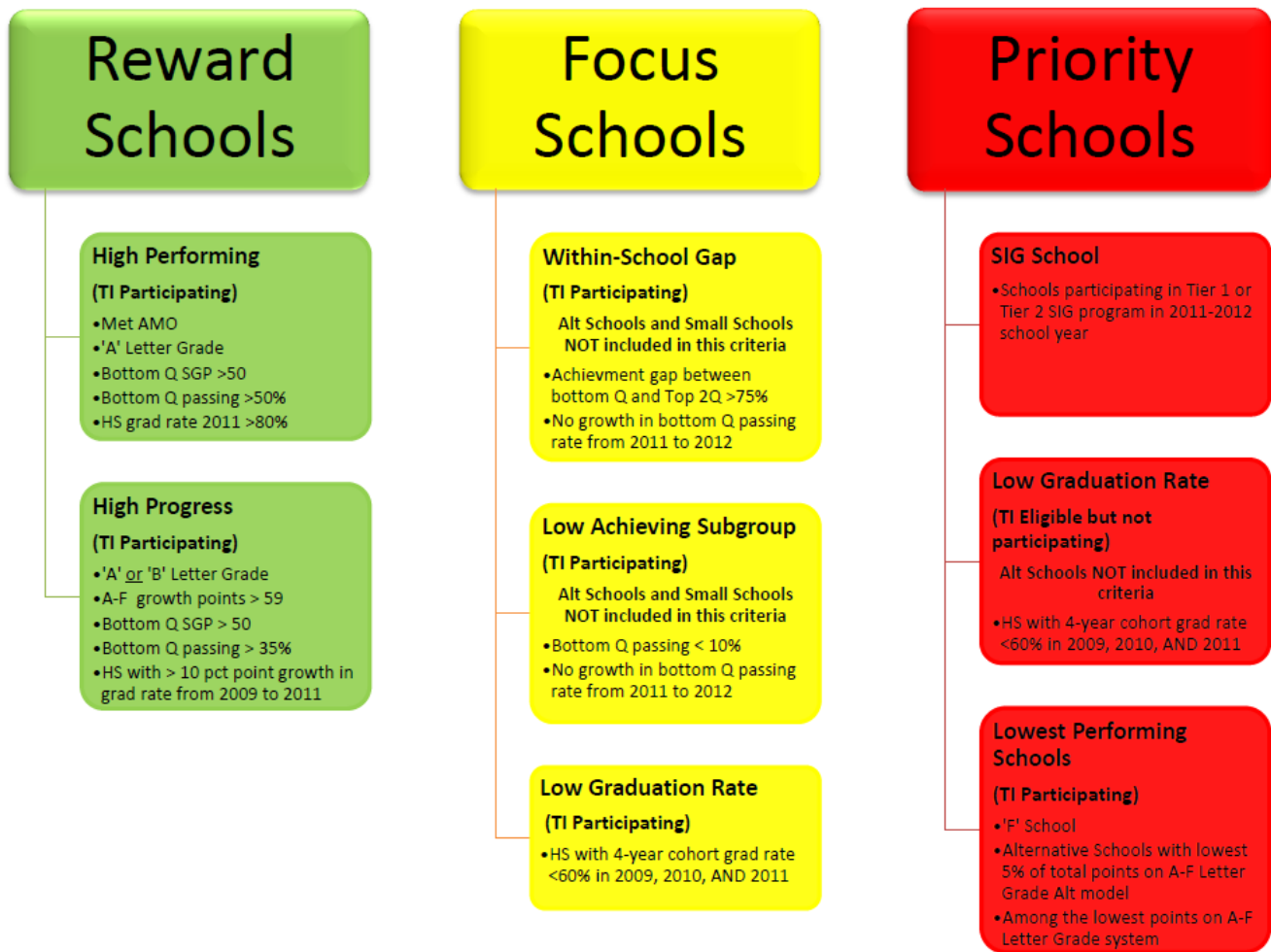


School Improvement

Number of Title I Schools Identified for School Improvement. Starting in 2012, the School Improvement Status definitions and terms have changed due to the ESEA Flexibility Request. A complete list of 2012 Reward, Focus, and Priority Schools is available here: <http://www.azed.gov/no-child-left-behind/files/2012/09/az-esea-reward-schools.pdf>. For detailed definitions of these terms, please see this page: <http://www.azed.gov/research-evaluation/files/2012/10/2012-reward-priority-focus-schools-guide.pdf>.

Improvement Status	2012
Reward	114
Focus	126
Priority	65

Arizona's Reward, Focus, and Priority School Definitions



State Accountability – A-F Letter Grades

The A-F Letter Grade as required by state law (A.R.S. §15-241) is to be calculated with 50 percent on student growth and 50 percent on academic achievement. For more information about the A-F Letter Grade accountability system go to <http://www.azed.gov/research-evaluation/a-f-accountability/>.

Public Schools

The following table shows the number and percent of schools by the A-F Letter Grade received in 2012. The A-F Letter Grades is the system for evaluating schools required by state law. For A-F Letter Grade definitions, please see page 28.

2012 A-F Letter Grades - Schools		
Letter Grade	Number of Schools	Percent of Schools
A	406	22.07%
B	618	33.59%
C	546	29.67%
D	260	14.13%
F	10	0.54%
Total	1840	100.00%

Local Education Agencies (LEAs)

The A-F Letter Grade traditional model was used to evaluate LEAs as required by state law at the student-level¹. For more information on the A-F Letter Grade accountability system please go to <http://www.azed.gov/research-evaluation/a-f-accountability/>. The following table shows the number and percent of LEAs (i.e., district and charter holders) A-F Letter Grade received in 2012.

2012 A-F Letter Grades - LEAs		
Letter Grade	Number of LEAs	Percent of LEAs
A	119	20.84%
B	172	30.12%
C	171	29.95%
D	109	19.09%
Total	571	100.00%

¹ The traditional A-F Letter Grade model was used to calculate the letter grades for the LEAs with two exceptions: 1) if an LEA only had Alternative Schools then the average of the Alternatives Schools' A-F Letter Grades was attributed to that LEA; 2) If an LEA was a singleton (i.e., only had one school), then the LEA was given the same grade as the school to warrant any discrepancies used in the model used to calculate the school's A-F Letter Grade and the traditional model.



A-F Letter Grades State Accountability for Schools and LEAs

Letter Grade A - A school assigned a letter grade of A demonstrates an excellent level of performance.

Letter Grade B - A school assigned a letter grade of B demonstrates an above average level of performance.

Letter Grade C - A school assigned a letter grade of C demonstrates an average level of performance.

Letter Grade D - A school assigned a letter grade of D demonstrates a below average level of performance.

Letter Grade F - A school assigned a letter grade of F demonstrates a failing level of performance. The State Board of Education may also assign a school a letter grade of F if they determine that the school is among the "persistently lowest-achieving schools" in the state under the federal school accountability requirements pursuant to section 1003(g) of the Elementary and Secondary Education Act (20 United States Code section 6303).

For more detailed information on the 2012 A-F Letter Grade models, please see this document:

<http://www.azed.gov/research-evaluation/files/2012/08/2012-a-f-letter-grades-guide-for-parents.pdf>.



Arizona Educators

The following table displays the number of teachers who received a post-secondary degree[s]. For more about Arizona teachers please visit this page <http://www.azed.gov/highly-qualified-professionals/>.

Professional Qualifications of All Public K-12 School Teachers in the State

All Public K-12 School Teachers 2011-2012

Highest Degree Held	Number of Teachers
Bachelor's	28,039
Master's	20,892
Doctorate	364
Other	22

Percentage of Core Academic Classes Not Taught by Highly Qualified Teachers 2012

State (FY 2012)	1.1
High Poverty (FY 2012)	1.1
Low Poverty (FY 2012)	1.5

Percentage of Public K-12 Teachers with Emergency/Provisional Certification 2012

State (FY 2012)	0.0
-----------------	-----





State of Arizona Department of Education

Research and Evaluation
602-542-5151

[http://www.azed.gov/research-evaluation/
ReportCards@azed.gov](http://www.azed.gov/research-evaluation/ReportCards@azed.gov)

The distribution of this report is mandated by the No Child Left Behind Act. The contents of this publication were developed with funds allocated by the U.S. Department of Education under Title I, Part A of the No Child Left Behind Act.

The Arizona Department of Education of the State of Arizona does not discriminate on the basis of race, religion, color, national origin, sex, disability or age in its programs, activities or in its hiring and employment practices. If you have questions or grievances related to this guideline, please contact the Administrative Services DAS at (602)542-3186.



Research and Evaluation • 1535 West Jefferson, Bin 16 • Phoenix, Arizona 85007 • 602-542-5151 • www.azed.gov