

Preliminary to Final: How Data can Change

Yovhane Metcalfe, Ph.D.
Chief Accountability Officer
Arizona Department of Education

Objectives for Today

- Better understand how ADE uses student test data to measure growth
- Learn more about SGP and growth models
- Gain useful knowledge for when preliminary accountability determinations are released

&

Get rid of the “Black Box”

Some FAQ's

Just a sampling of some common questions we get...

Frequently Asked Questions

How old is this girl?

Frequently Asked Questions

Does A-F come out of a
“Black Box?”

The Accountability Team

- Yovhane Metcalfe, Ph.D.
 - Chief Accountability Officer
 - PHD in Education Research & Evaluation
 - Greenway High School Class of XXXX



The Accountability Team

- Fei Zhao, Ph.D.
 - Research Scientist
 - PHD in Education Psychology – Research, Evaluation, Measurement & Statistics Track.
 - LIKES talking about “psychometrics”



The Accountability Team

- Jen Marmo, Ph.D.
 - Research Associate
 - PhD in Communication
 - Specializes in ELL accountability
 - Also a certified personal trainer and has no time for new clients until after A-F



The Accountability Team

- Dina Aouad
 - Accountability intern
 - ASU undergrad majoring in Political Science & Business
 - Graduated from Chandler High School (last year)



Frequently Asked Questions

What happens to the data between preliminary and final letter grades?

Frequently Asked Questions

How can a student's SGP change based on the same test score on the same test?

Frequently Asked Questions

Why did my growth points change?

Is there a “Black Box”?

No, “R” is a software program.

Preliminary Data

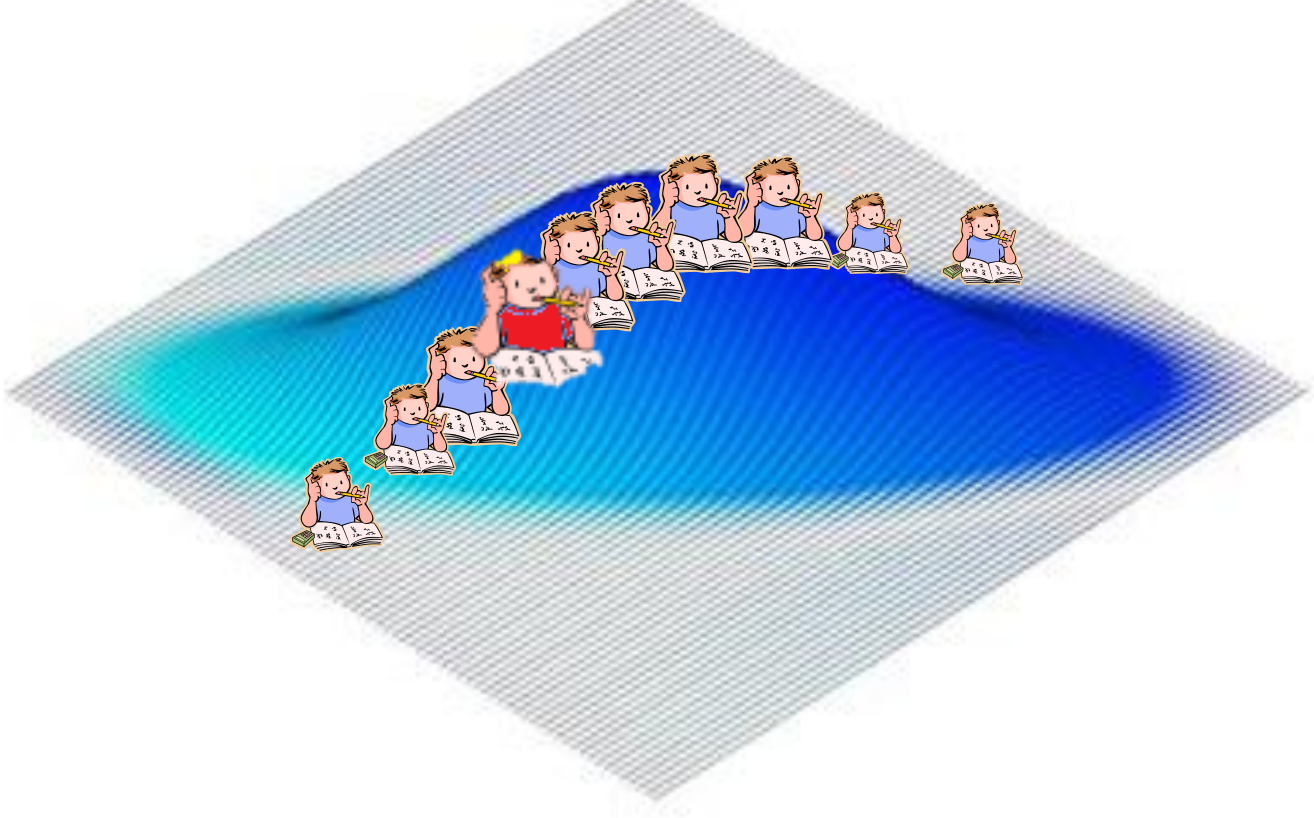
Grade 4 Math



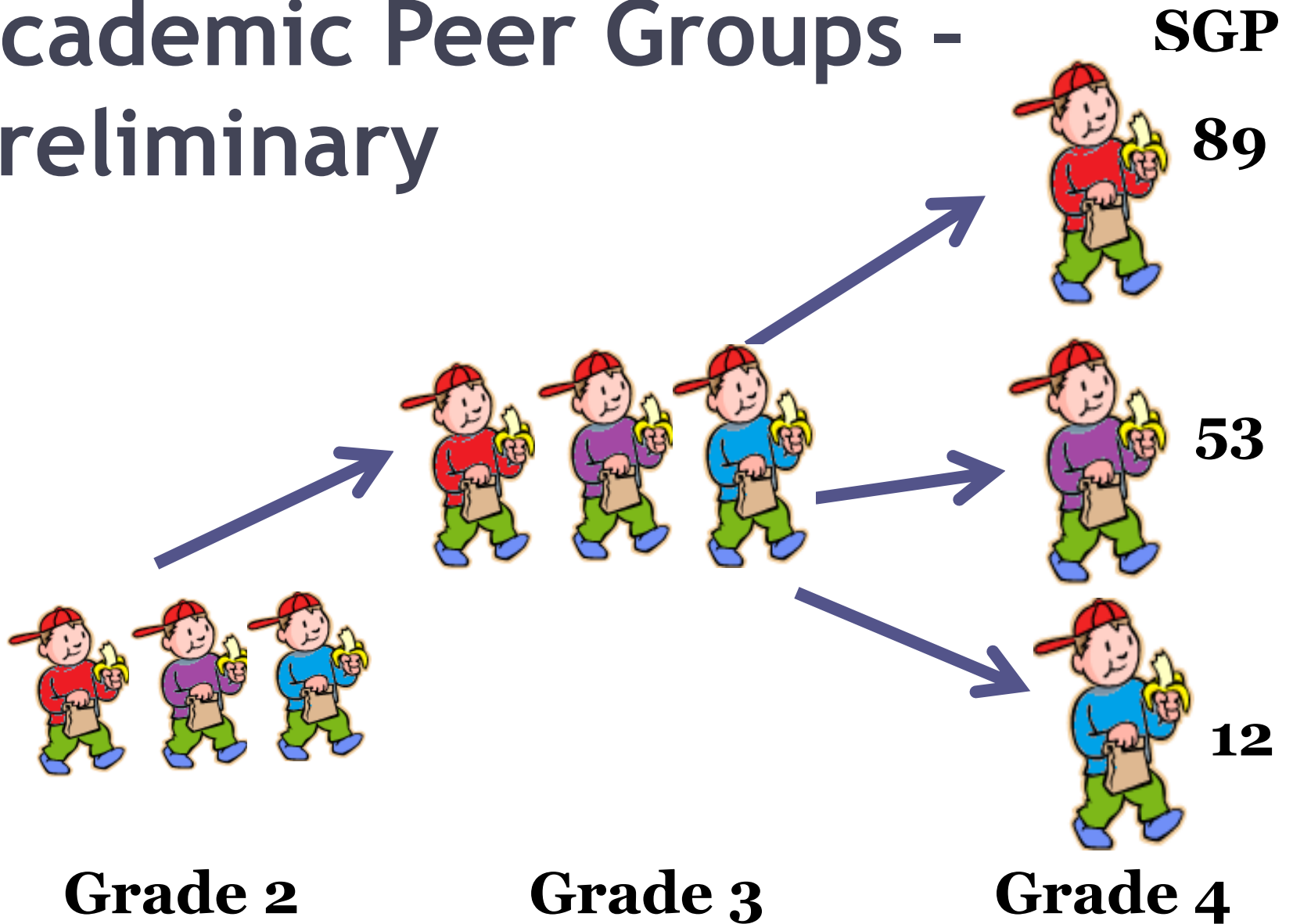
Growth Modeling: SGP

99

1



Academic Peer Groups - Preliminary



Preliminary Student Growth Percentile

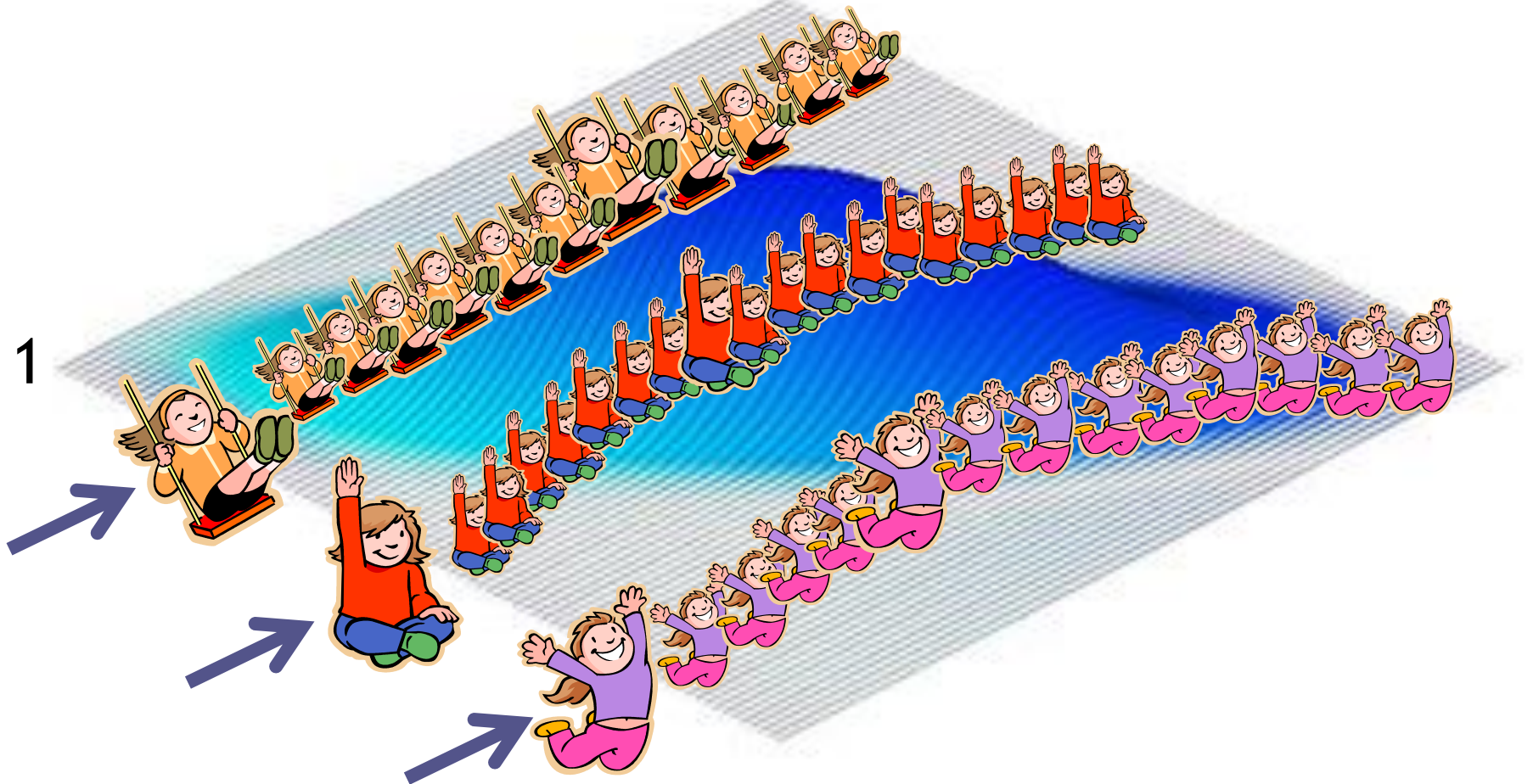


Every student with a SGP has a valid current and prior year test.

Academic Peers Statewide

99

1



Final Data

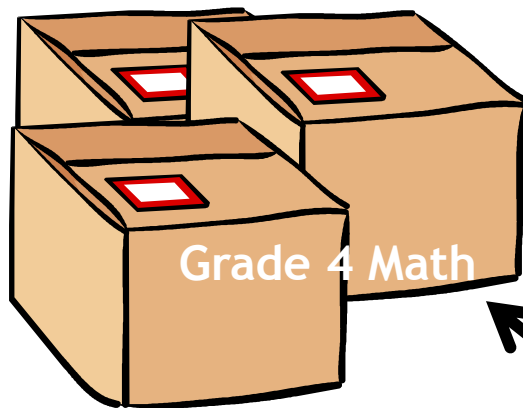
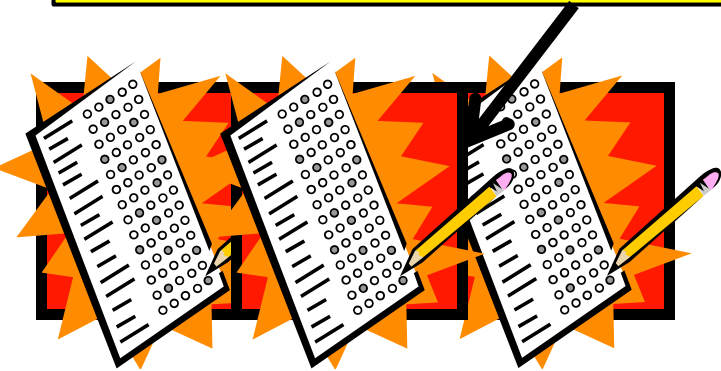
June 30th by 5 p.m.

Why is data FINAL?

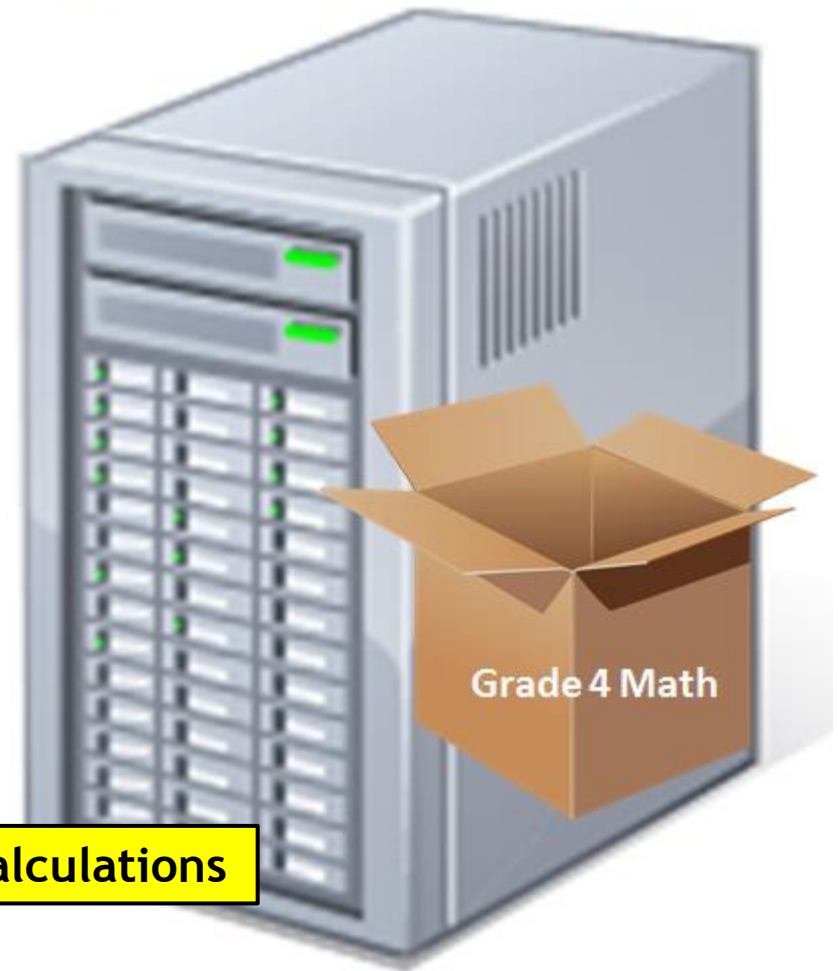
- End of the fiscal year (6/30)
 - School Finance
 - Accountability
- Full snapshot of the entire academic year
- Schools submit “clean” or “corrected” data to ADE
- The beginning of Statewide Integrity and Aggregation

“Final” Data

Elementary schools correct test records after preliminary

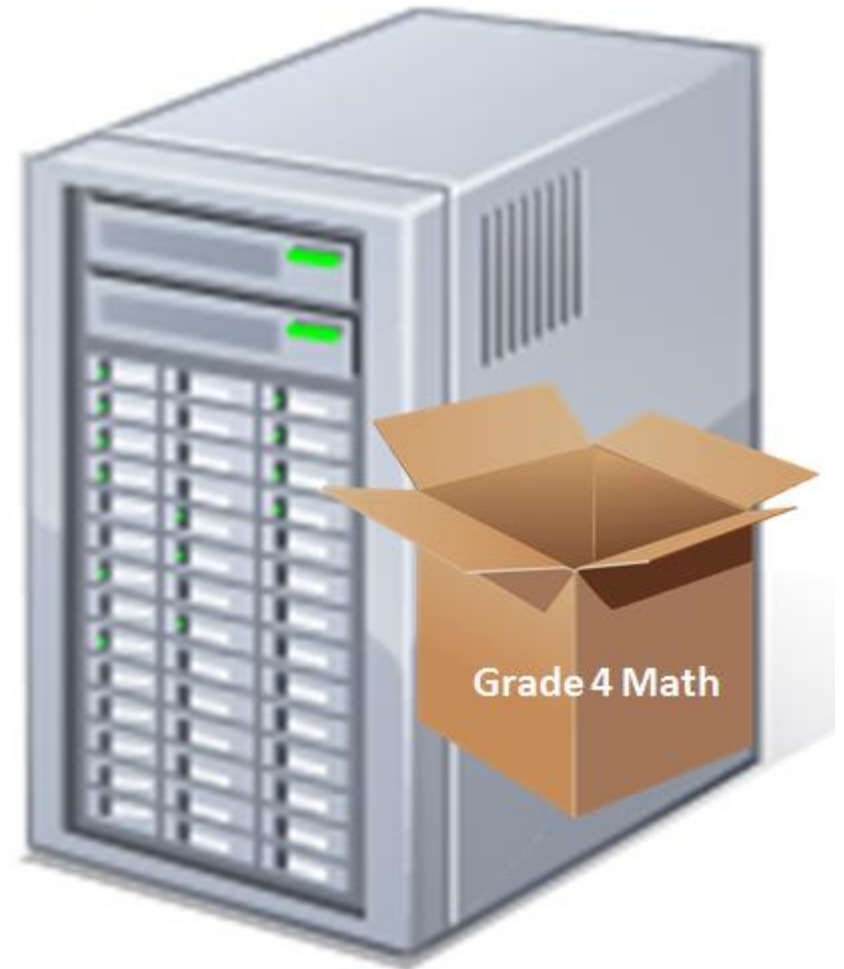
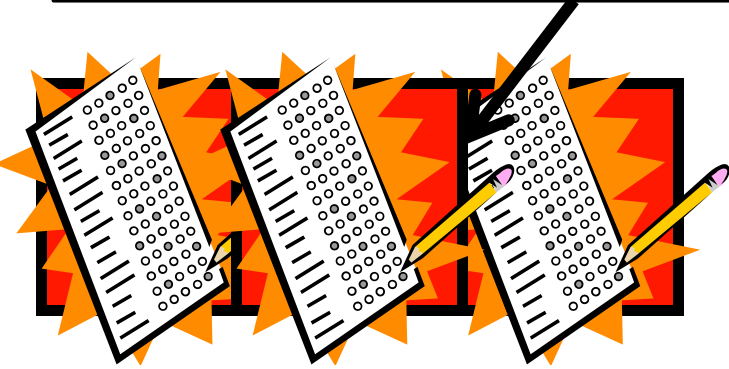


Data delivered after preliminary grade calculations



“Final” Data

Elementary schools correct test records after preliminary



Building the Growth Model for Final SGP

99

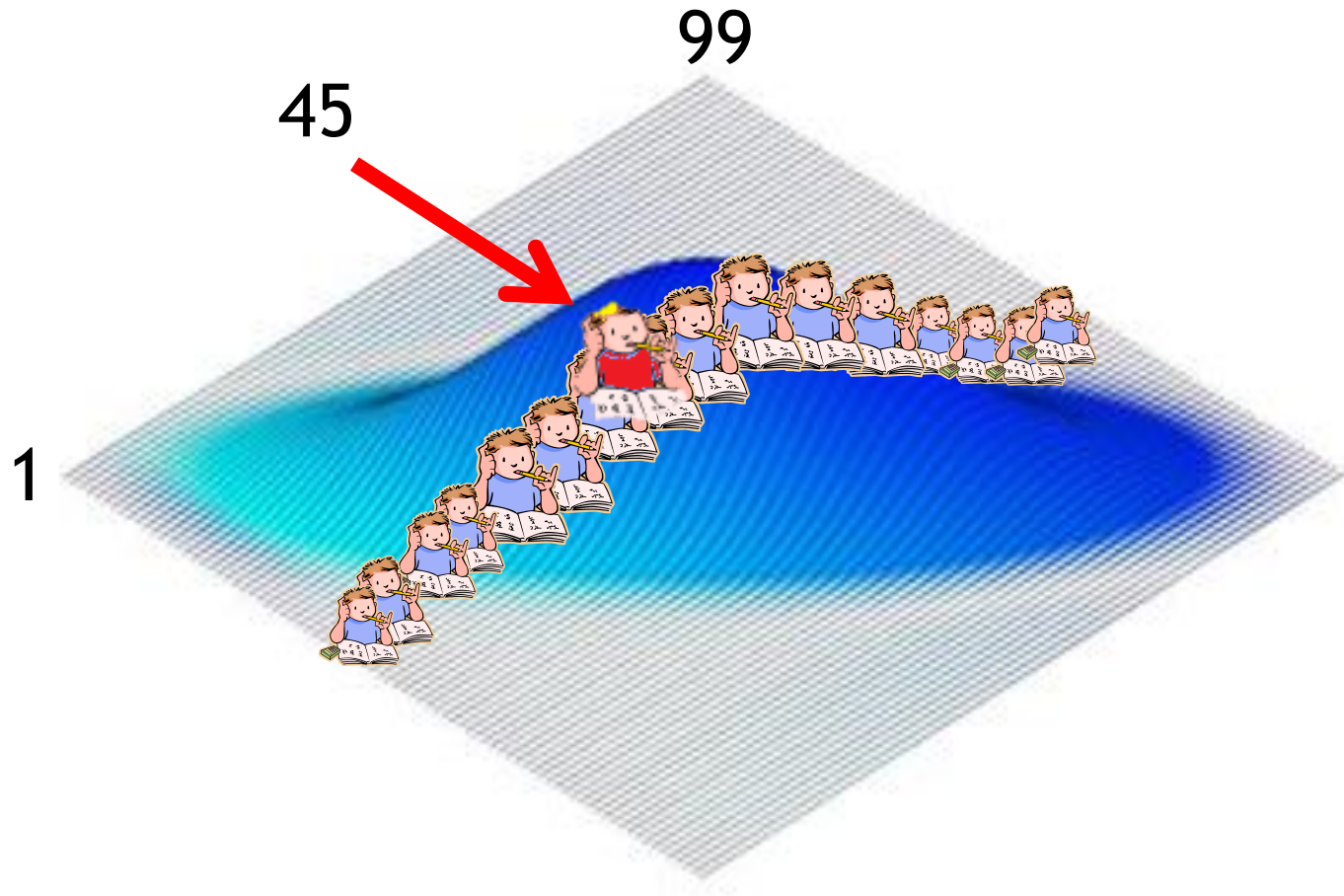
1



How can an SGP change for the same student on the same test?

The growth model gained more information regarding the academic peer group of that student which adjusted the percentile rank (SGP).

Building the Growth Model for Final SGP



FINAL SGP

Her SGP was impacted by her academic peers being added.



This student's test record passed integrity after enrollment corrections.



Can I calculate SGP?

Technically, yes.

The software is free, but SGP needs A LOT of data; ADE uses all data available throughout the state.

Accuracy
increases as the
number of
comparison peers
increase.

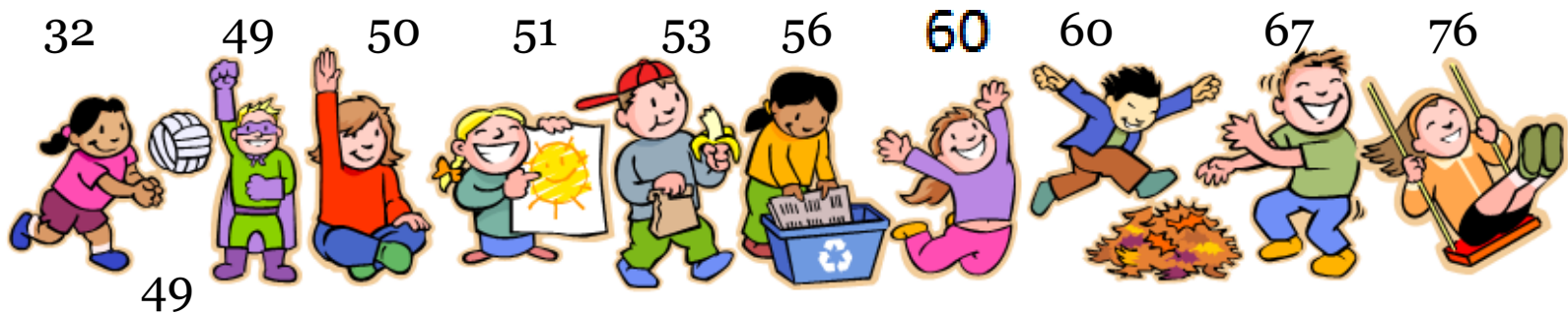


How did my growth points change?

All data movement, corrections, etc. in the state impact the growth model.

Median Growth Points

Preliminary = 54



FINAL = 53



Why do we do this?

- Preliminary growth score is an *estimation* based on **preliminary** data.
 - It does not change for most schools and/or students.
- Final growth model is composed of all valid test records from Arizona public school students.

Preliminary vs. FINAL

- On June 26th, schools will receive a total of all A-F points and points by component.
- No A-F letter grade will be assigned on June 26th.
 - All schools will see total points and a “P” instead of the letter grade in Common Logon.
 - Underlying static data, student-level file available for growth, percent passing, and ELL points.
- FINAL letter grades assigned based on data corrections and all data received by June 30th.

Frequently Asked Questions

What's a static data file and why doesn't it have names?!

What questions do you still have?

Get an answer now (maybe) or email Achieve!



Thank you!

Arizona Department of Education
Accountability Section