



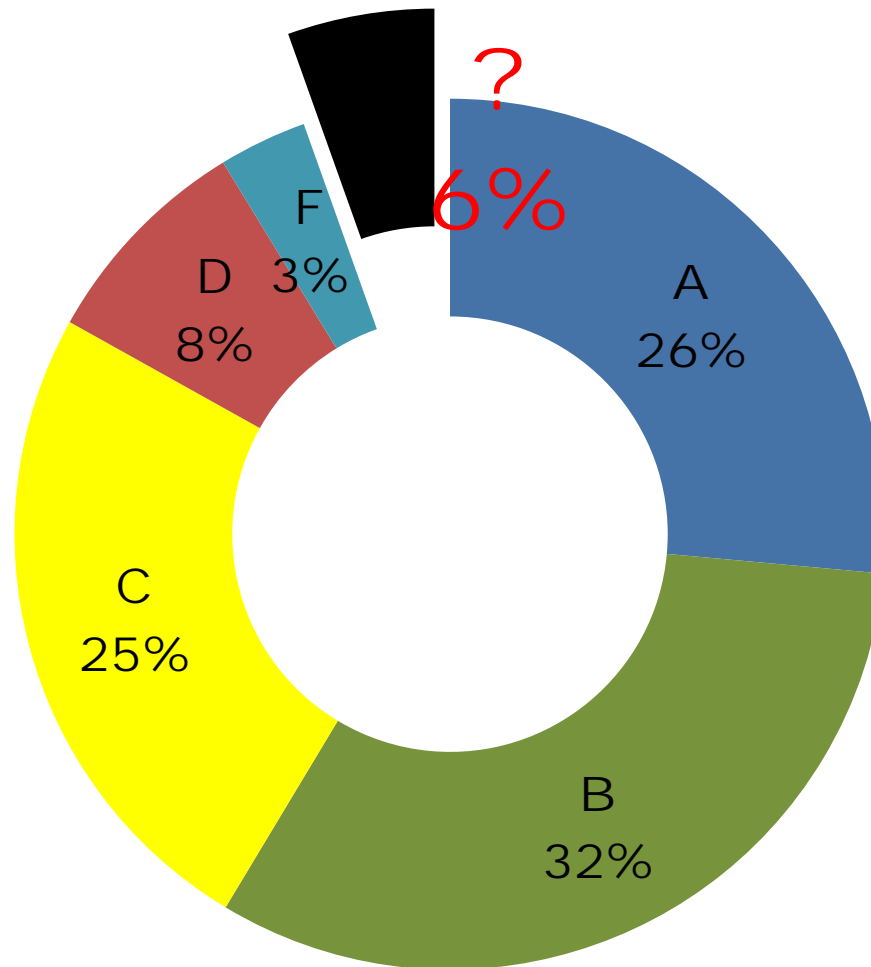
**2013-2014 ACCOUNTABILITY
DETERMINATIONS FOR ARIZONA SCHOOLS
WITH PENDING LABELS**

Overview



- Background
- Recommendation(s)
 1. Letter grades for Arizona Online Instruction Schools
 2. Accountability for schools with insufficient data
- Future Implications

2013-2014 School Letter Grades



Why Are Schools Not Rated?



Insufficient
Data



Assumptions
of A-F



Goals & Considerations During Development



Fairness for ALL schools

Nature of instruction

Increase the amount
of information used
in accountability
determinations

Population served

Use available
information

Process to Research & Develop Recommendations



AOI Schools

- Charter & District AOI Operators
- National researchers & organizations specializing in online instruction
- Impacted ADE program areas
 - School Improvement
 - School Finance
 - Government Relations

Schools with Insufficient Data

- School leaders in
 - Rural district schools
 - Qualified charter schools
- Other State Education Agencies
- Arizona State Board for Charter Schools
- ADE Research & Evaluation, Highly Effective Teachers & Leaders, Standards, Assessment



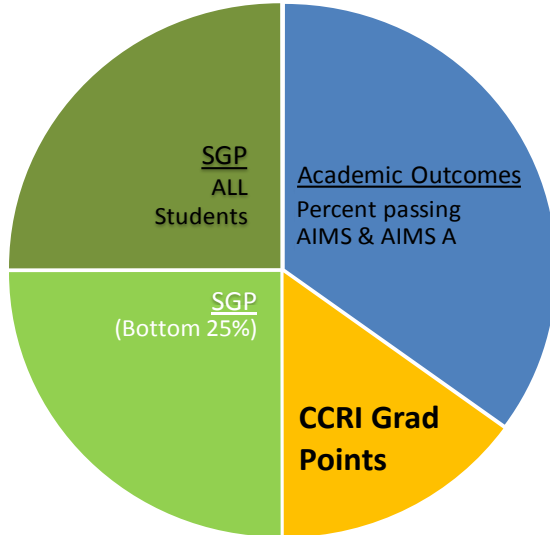
2013-2014 Accountability Determinations

A-F LETTER GRADES FOR AOI SCHOOLS

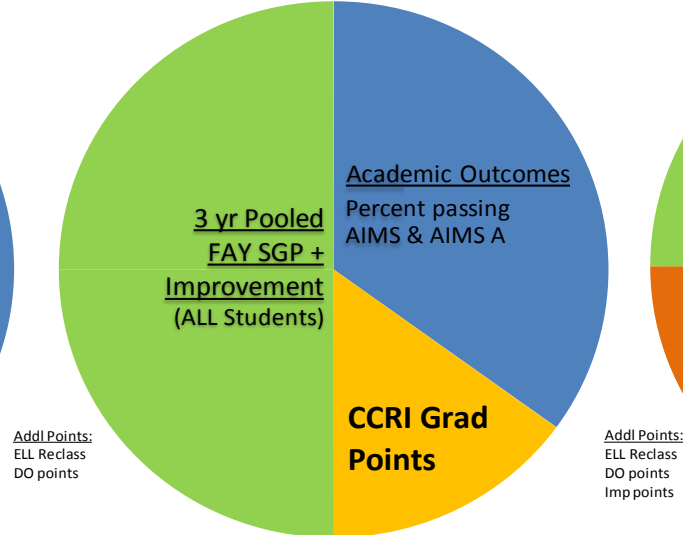
2014 AOI Model



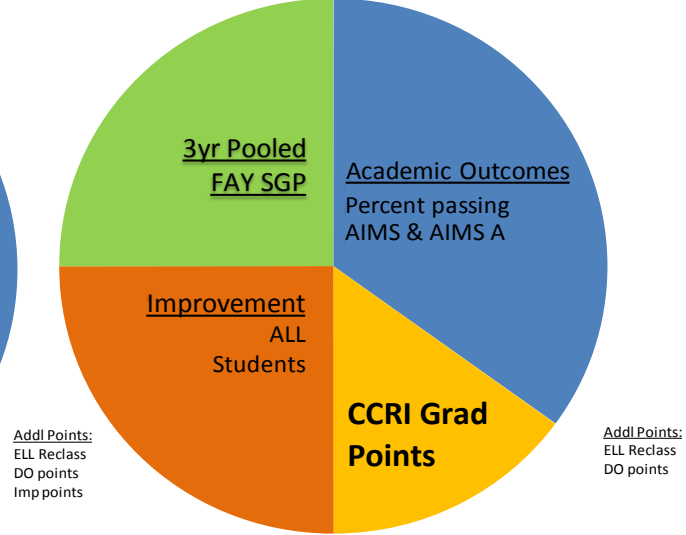
Traditional B&M
2013-2014



Proposed AOI Model
2013-2014



Alternative B&M
2013-2014



Percent Passing AIMS/AIMS A



AOI issues

- AOI students tend to be concurrently enrolled or not for full year
- District AOIs serve large numbers of students who test at other schools within the district

Recommended Changes

- **Include all students tested but adjust for FAY**
- **Option to use LEA percent passing for AOI letter grade**


Percent Passing AIMS/AIMS A



Which Ever is Higher



LEA's A-F
percent passing



School's
percent passing
of all students

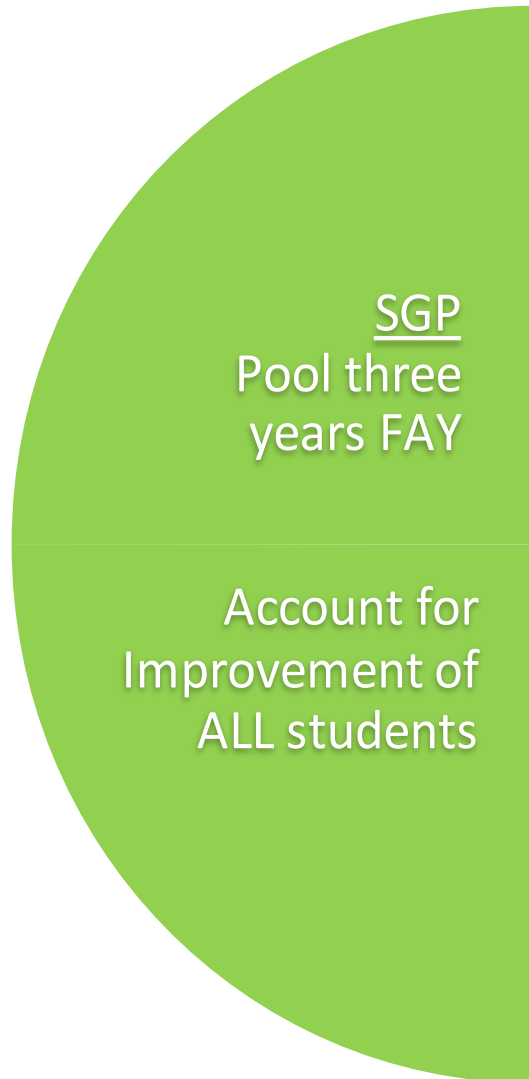
- Adjusted by
percentage of
FAY students



Required within ARS 15-241 for 2014 Letter Grades

GROWTH & IMPROVEMENT

Growth Measure for AOsIs



- Multiple years of SGP data
- Inclusion of Non-FAY for improvement only
- Change methodology to truly incentivize improvement
 - Additional points for improvement of high school re-testers



Additional points to earn and requirement to test at least 95% of students

ADDITIONAL POINTS AND TEST PARTICIPATION

Points Available



Cap
points

- 95% Test participation rate required of ALL schools

0 or +3

- Dropout Rate Reduction

0 or +3

- ELL Reclassification

Up to 3
points

- Improvement of AIMS re-testers



Putting it all together

TOTAL POINTS AND A-F LETTER GRADE

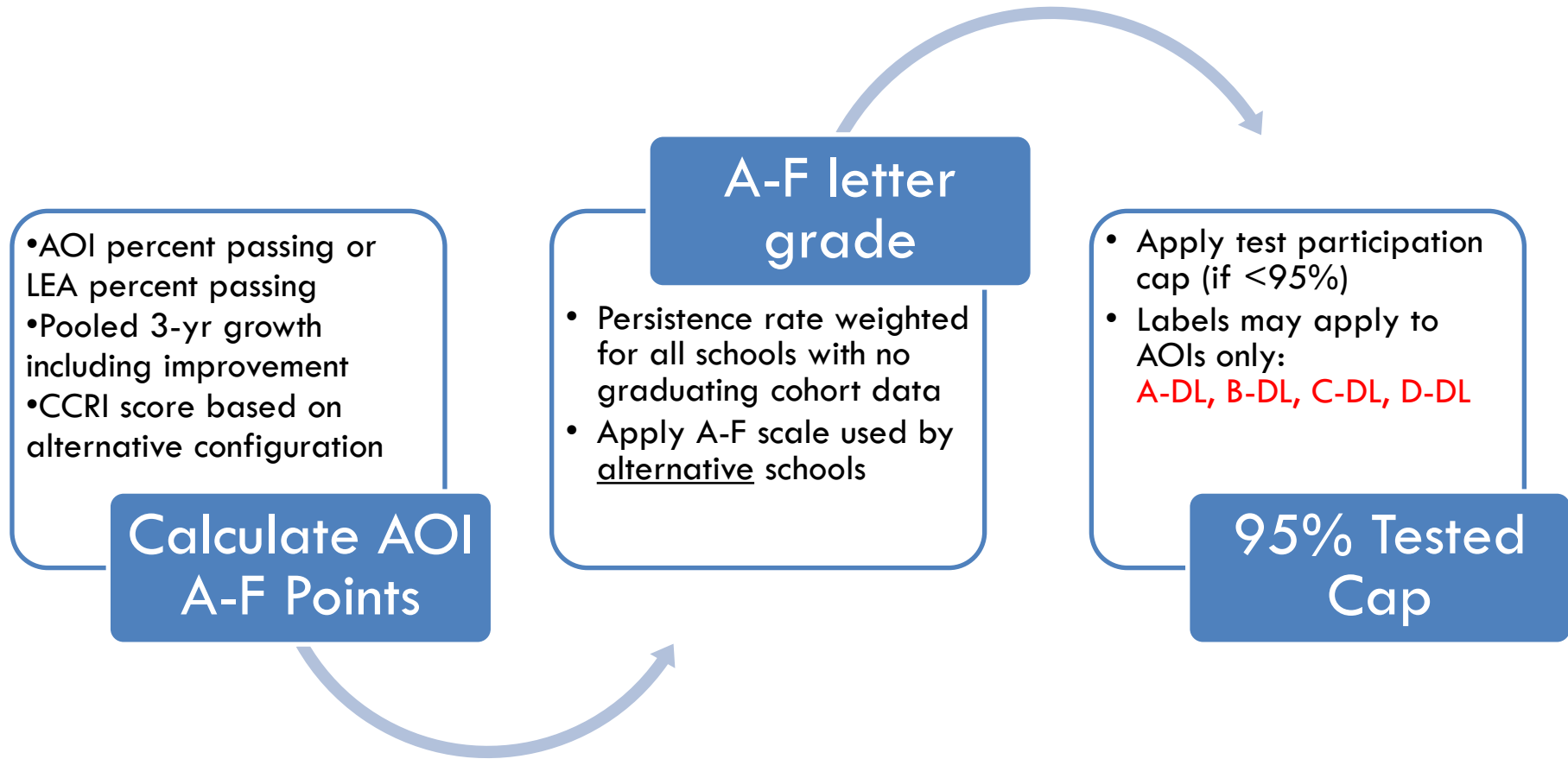
Letter Grade Scale



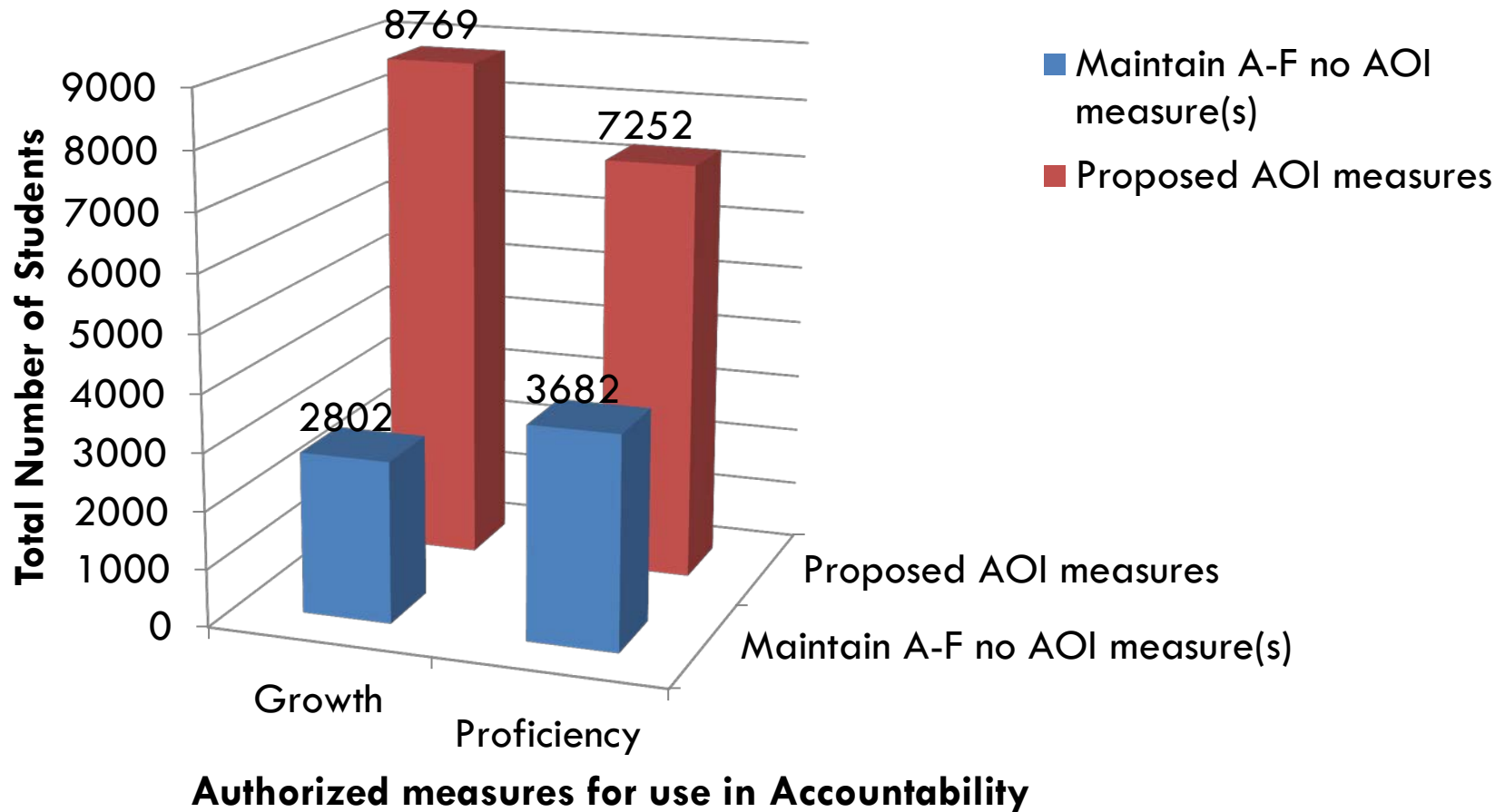
- AOI school grades denoted by “-DL”
- Apply 2014 Alternative Scale
 - Mirrors ALT measures (i.e. CCRI, improvement)
 - AOIs may qualify for ALT designation using AOI measurement

Letter Grades	Scale (ALT)
A-DL	167+
B-DL	132-166
C-DL	97-131
D-DL	0-96

Proposed 2014 AOI Letter Grading Process



Students Included in Accountability Determinations



Recommendation



Assign 2013-2014 A-F Letter Grades, as proposed by the Department of Education's Accountability Unit, for all AOI schools with pending labels using methodology and measures specific to online learning and instruction.



School Accountability based on Qualitative Evaluation

MEASURE OF ACADEMIC PROGRESS

What is a MAP?



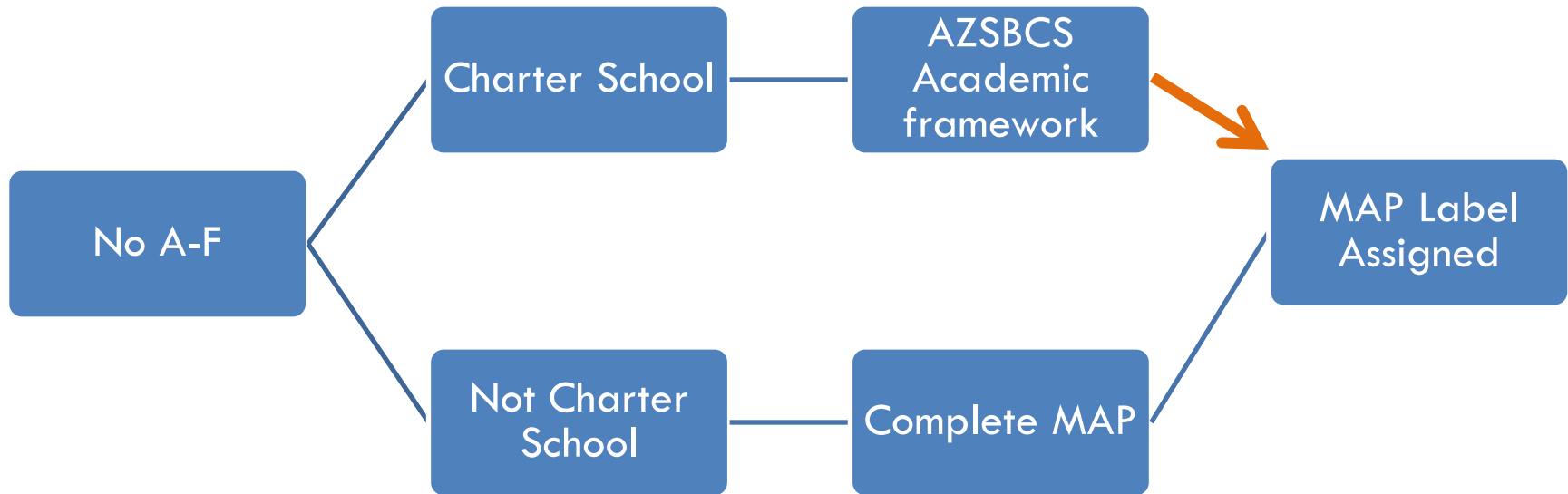
- Qualitative demonstration of academic program
 - Narrative description
 - Benchmark, portfolio, parent/student survey data, if available
- Each section independently evaluated
- Qualified education practitioners to review, rate schools' submission

Which Schools Qualify?

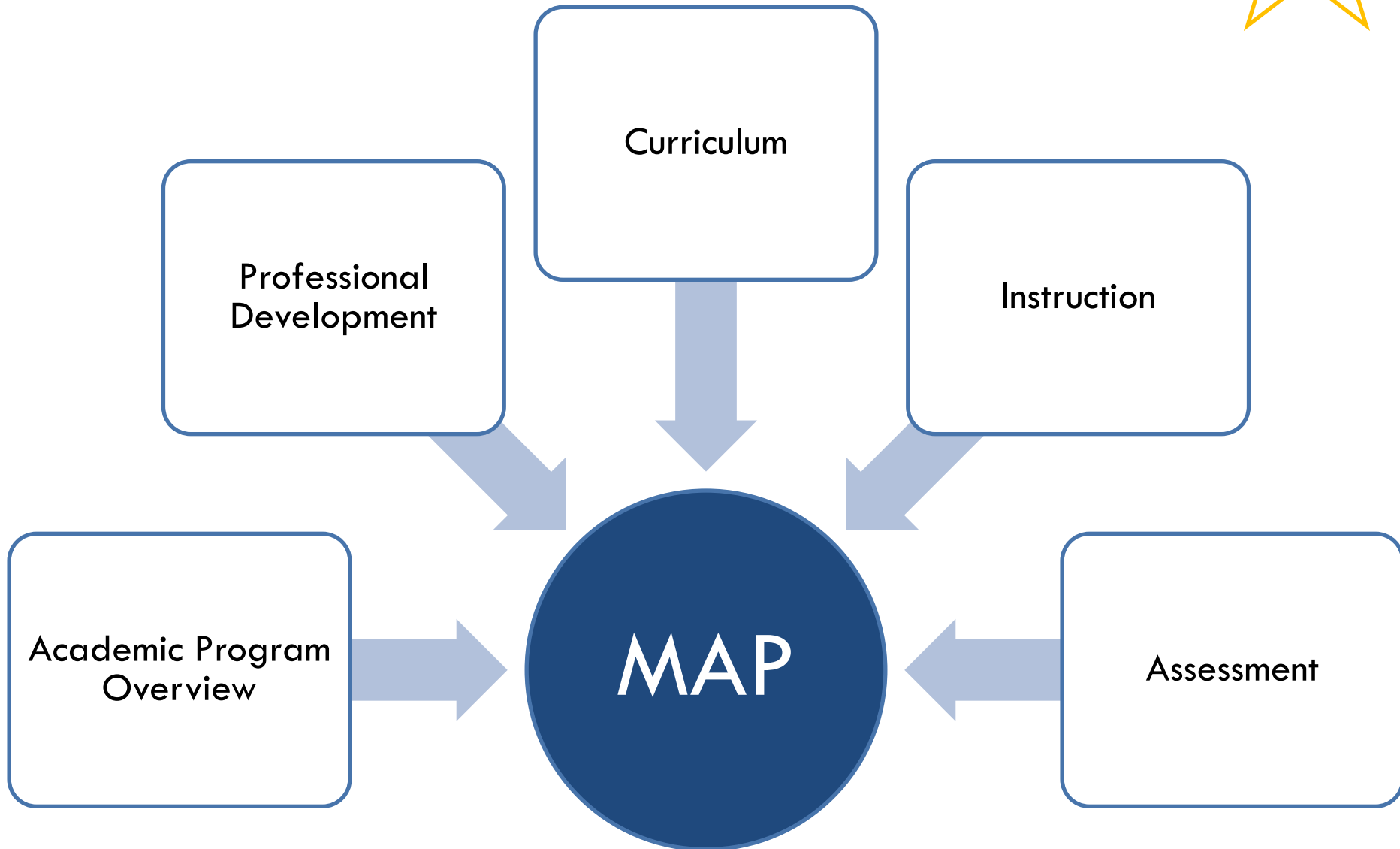


- ✓ Brick and mortar schools that did not receive an A-F Letter Grade.
- ✓ Schools with less than 30 test records in the last three years.
- ✓ Schools where assessment data do not capture full-time students served by the school for full-time instruction purposes.

MAP Process



Components of a MAP Submission



Accountability labels using MAP



Rating	Curriculum	Instruction	Professional Development	Assessment
Exceeds Standard	<p>Rubric provided.</p> <p>Narrative limited to no more than 500 words per prompt.</p> <p>Only 1-2 prompts per construct.</p> <p>Schools may include attachments, portfolios, etc. to supplement narrative.</p>			
Meets Standard				
Approaches Standard				
Falls Far Below				
	<p>Each area is independently scored by a <u>qualified</u> educator for an OVERALL DETERMINATION.</p>			

Recommendation



Adopt and implement the MAP system for 2013-2014 accountability determinations in order to evaluate schools with insufficient data and currently pending labels as proposed by the Department of Education's Accountability Unit.



Contact achieve@azed.gov for additional feedback!