



Early Childhood System Approaches in Northeastern Arizona

May 9-10, 2019

READY FOR SCHOOL. SET FOR LIFE.

Arizona's First Things First

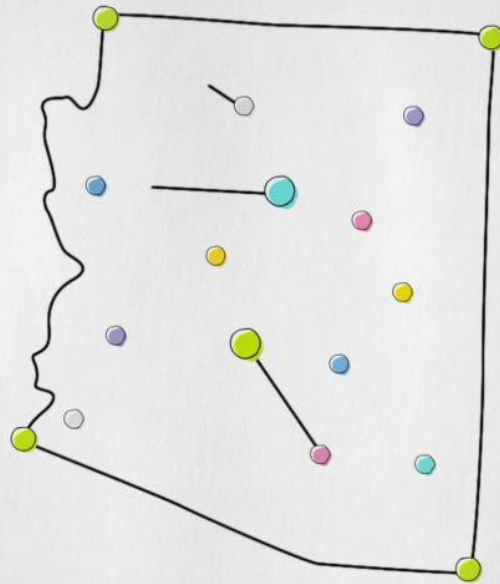
All of Arizona's
children succeed
in school and in
life.



Arizona's First Things First

First Things First is one of the critical partners in creating a family-centered, comprehensive, collaborative and high-quality early childhood system that supports the development, health and early education of all Arizona's children birth through age five.



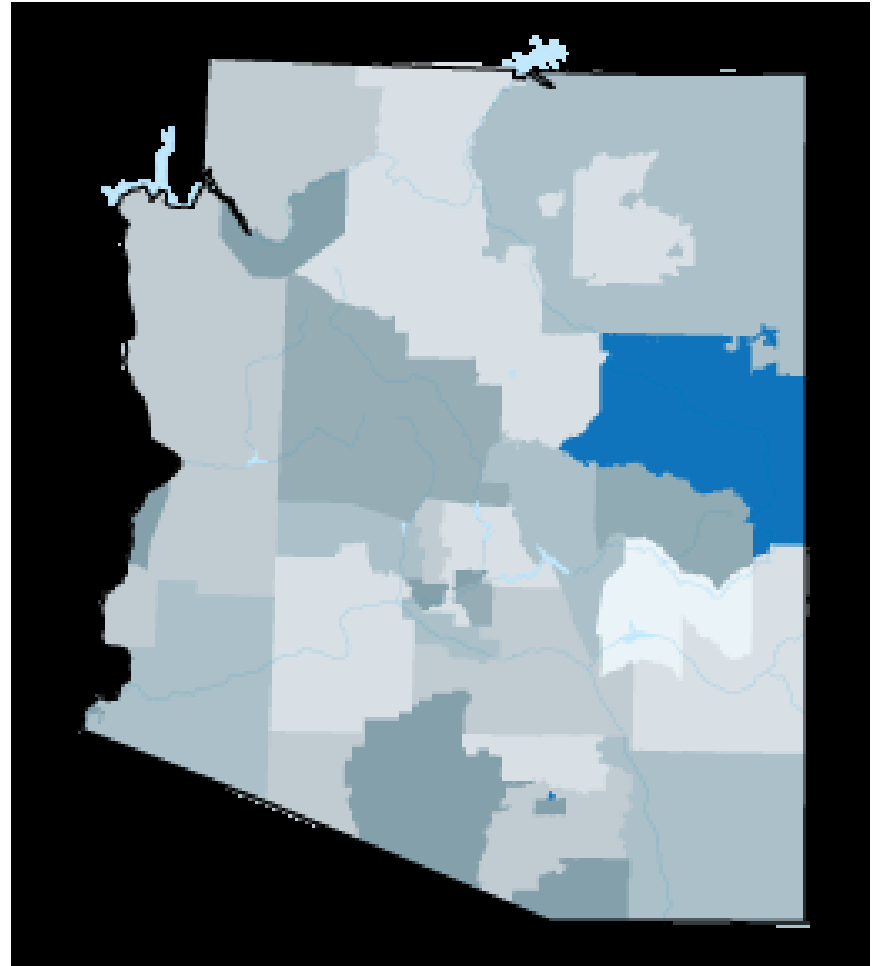


FIRST THINGS FIRST

And that's why Arizonans created First Things First.

Navajo/Apache Regional Partnership Council

Navajo/Apache
Region encompasses
the non-tribal
portions of Navajo
and Apache
counties.



Navajo/Apache Regional Partnership Council



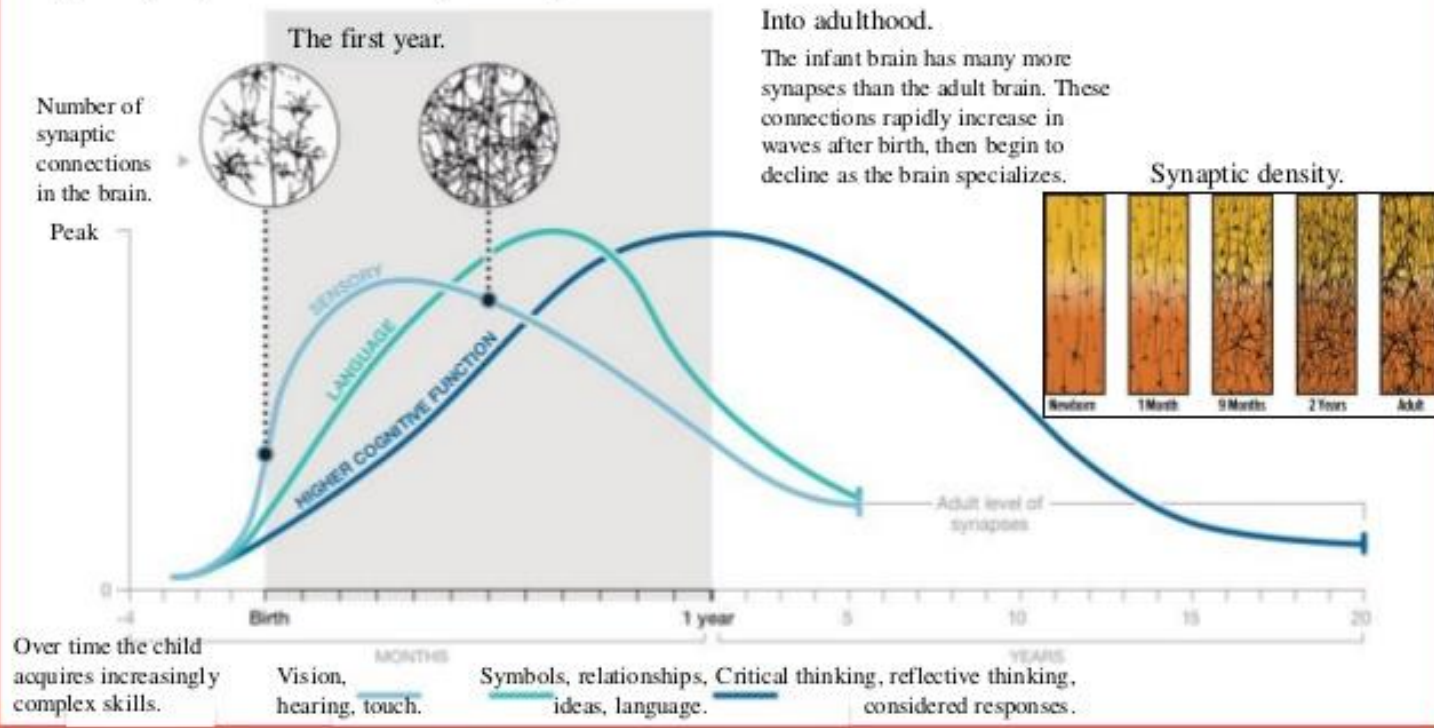
Byron Lewis, Chair

Carrie Classay, Vice-Chair

Brain Development

The two basic principles of brain development are: 'neurons that fire together wire together' and 'use it or lose it', creating appropriate neural networks.

These sensitive periods of 'proliferate and prune' are when the baby's brain architecture is most shaped by experience. – But you do get a second chance in adolescence!



Brain Development



Brain Development



Newborn



1 Month



9 Months

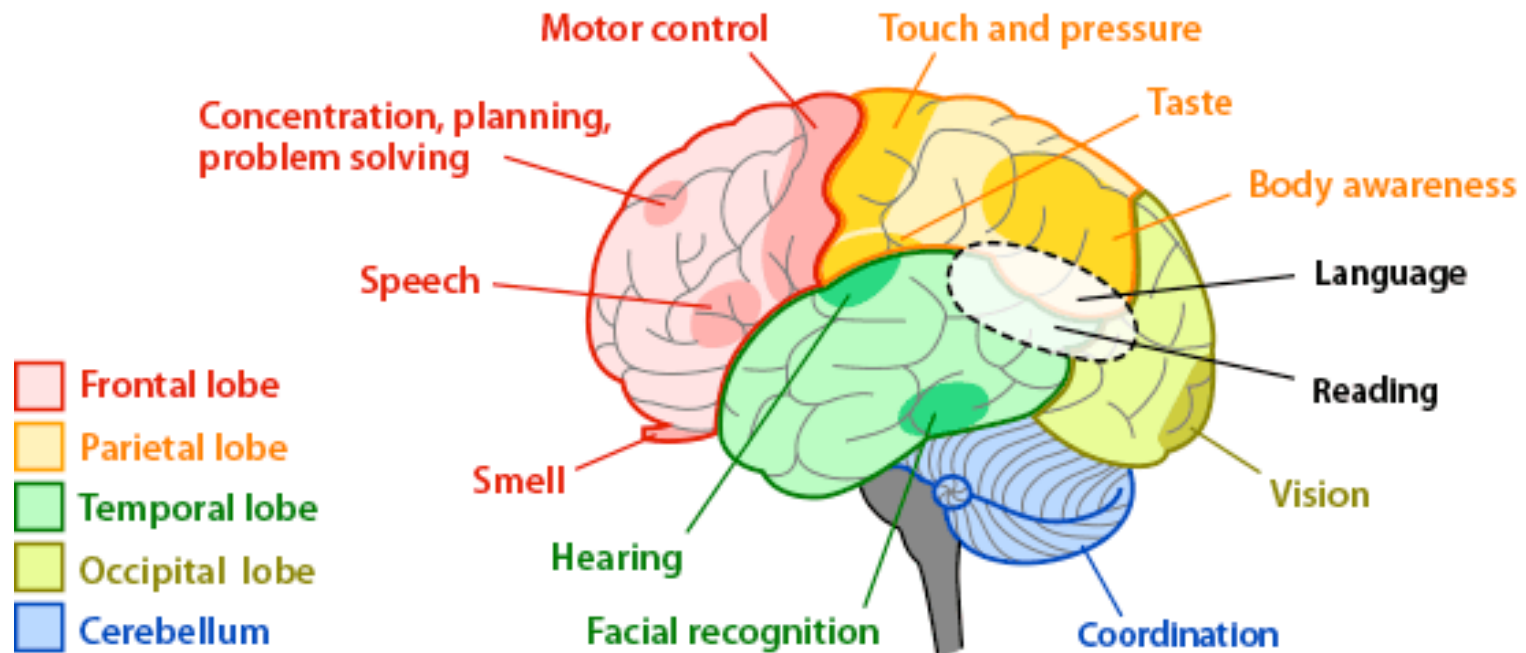


2 Years



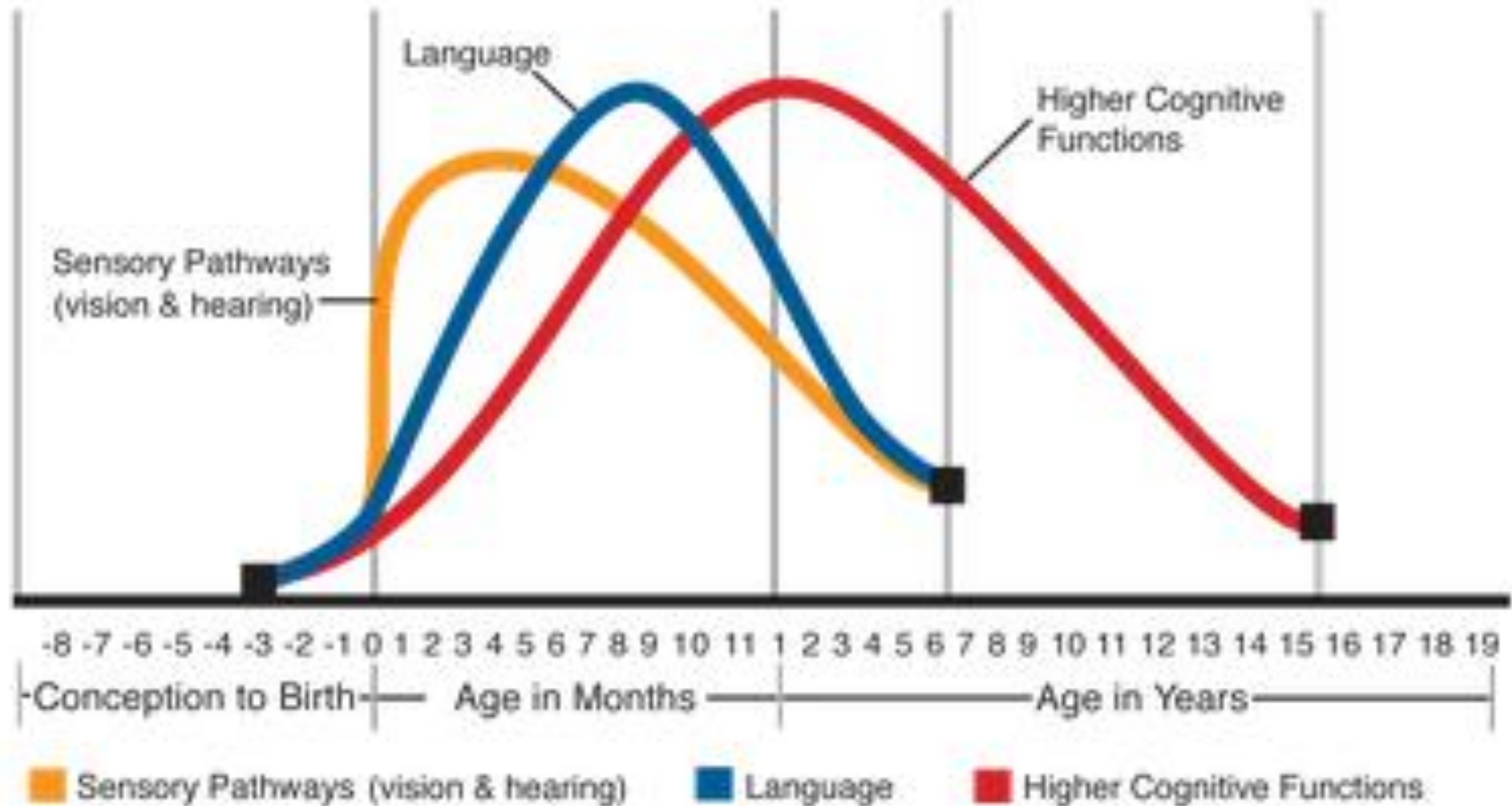
Adult

Brain Development



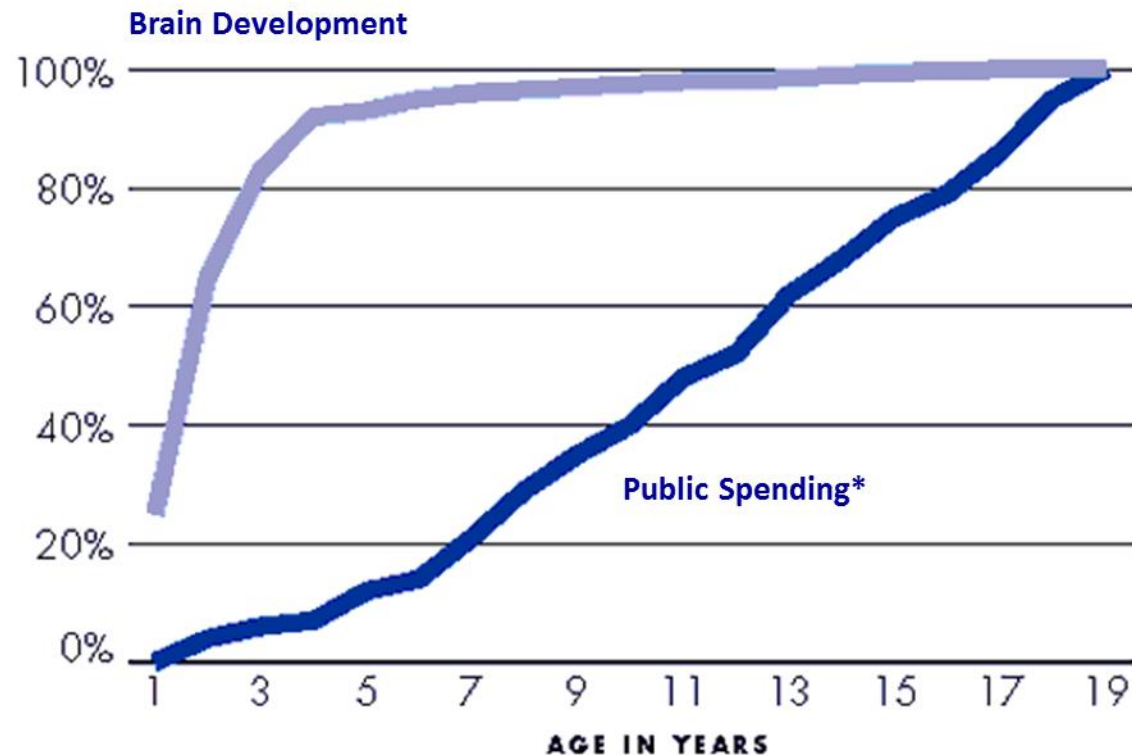
1. Experiences Build Brain Architecture.mp4

Brain Development



Graph Source: C.A. Nelson (2000)

Return on Investment



* Portion of total public investment in children being spent during indicated year in children's lives.

RAND corporation

Return on Investment

EARLY CHILDHOOD IS A SMART INVESTMENT




\$1 

INVESTED IN EARLY
CHILDHOOD YIELDS UP TO A
\$16 RETURN

INCREASED

-  High School Graduation
-  College Matriculation
-  Economic Development
and Personal Income

DECREASED

-  Special Education/Remediation
-  Dependence on Social Welfare
-  Crime-Related Costs and
Incarceration Rates

 **FIRST THINGS FIRST**

Regional Data

In the Navajo/Apache Region

Poverty Rate	63% <\$35,000 per year	
Self-sufficiency	\$51,246 2 adults + preschooler	
Unemployment Rate	9.7 – 13.4% population wide	
Teen Pregnancy Rate	9%	
Single-Parent homes	32%	
High School Graduates	45%	
Substantiated Child Abuse	0-18	32 cases
Children entering foster care	0-18	149

Navajo/Apache Regional Data

3rd Grade

- Math Proficient/Highly **43.5%**
- Reading Proficiency/Highly **36.6%**

Graduation Rate **80.7%**

Navajo/Apache Regional Data

Nursery School, Preschool, Kindergarten

Arizona:	35.9%
Regional:	50.4%

Navajo/Apache Regional Data

Economic Status

Income < \$50,000/year 80.9%

Self sufficiency standard: \$51,000

- 2 adults and a preschooler



Strategic Planning for Superheroes

Strategic Planning



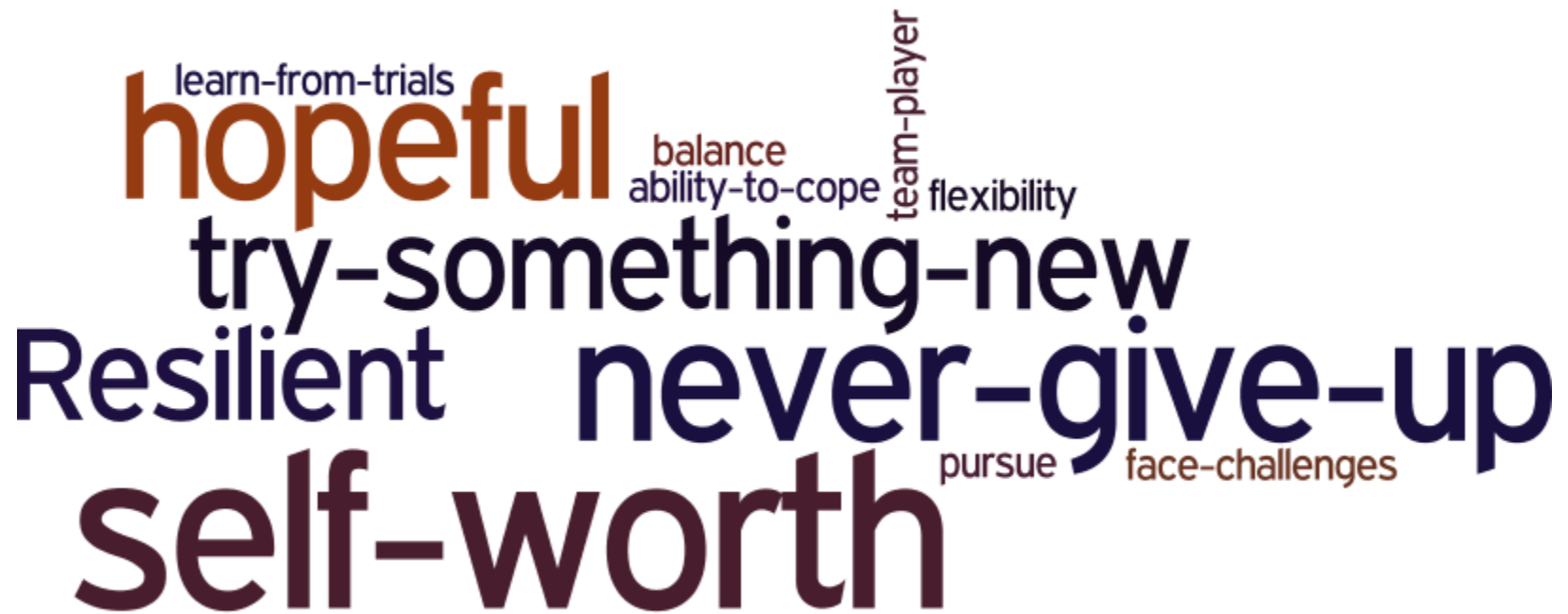
What We Bring

creativity connections
excited
Experience
energy
passion
local-interest resourceful
breaking-down-silos
engage
advocacy
multi-faceted
systems-thinker
innovation
commitment
effective-collaboration
perspective

What We Want for Our Kids



What Success Looks Like

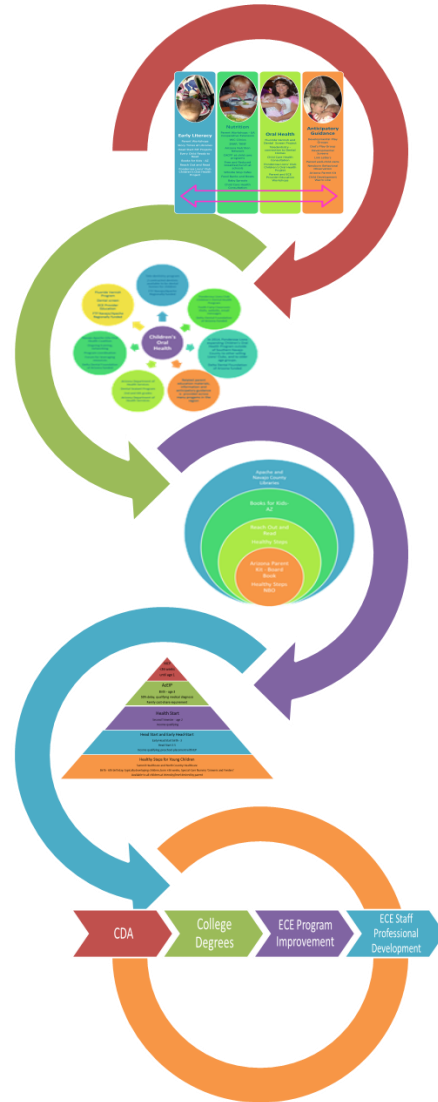


A word cloud illustrating various traits and actions associated with success. The words are arranged in a cluster, with some being significantly larger than others. The colors range from dark blue to brown. The words include: 'hopeful' (large, brown), 'try-something-new' (large, dark blue), 'Resilient' (large, dark blue), 'never-give-up' (large, dark blue), 'self-worth' (large, dark blue), 'learn-from-trials' (small, dark blue), 'balance' (small, brown), 'ability-to-cope' (small, dark blue), 'team-player' (small, dark blue), 'flexibility' (small, dark blue), 'pursue' (small, dark blue), and 'face-challenges' (small, brown).

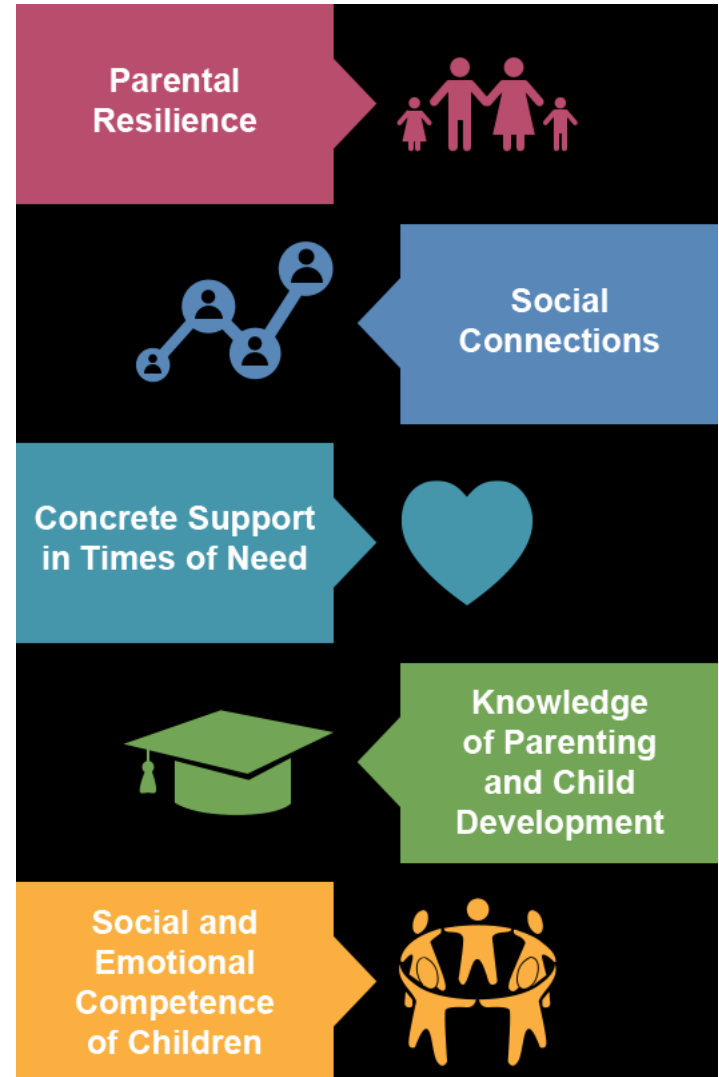
learn-from-trials
hopeful
balance
ability-to-cope
team-player
flexibility
try-something-new
Resilient
never-give-up
pursue
face-challenges
self-worth

Navajo/Apache System

Connected Programs and Supports



Adverse Childhood Experiences



Navajo/Apache System

Parental Resilience



Early Literacy

Parent Workshops
Children's Sections and Story Times at Libraries
Head Start RIF Projects
Every Child Ready to Read
Books for Kids - AZ
Reach Out and Read
Ponderosa Lions' Club Children's Vision Project



Nutrition

SNAP-Ed - UA Cooperative Extension
WIC Clinics
TANF
Arizona Nutrition Network
CACFP at child care programs
Free and Reduced breakfast/lunch at schools
Whistle Stop Cafes
Food Banks and Boxes
Baby Sprouts
Child Care Health Consultation



Oral Health

Fluoride Varnish and Dental Screen Project
Teledentistry - connection to Dental Homes
Child Care Health Consultation
Ponderosa Lions' Club Children's Oral Health Project
Parent and ECE Provider Education Workshops
Fluoride Varnish in Pediatric Care Practices

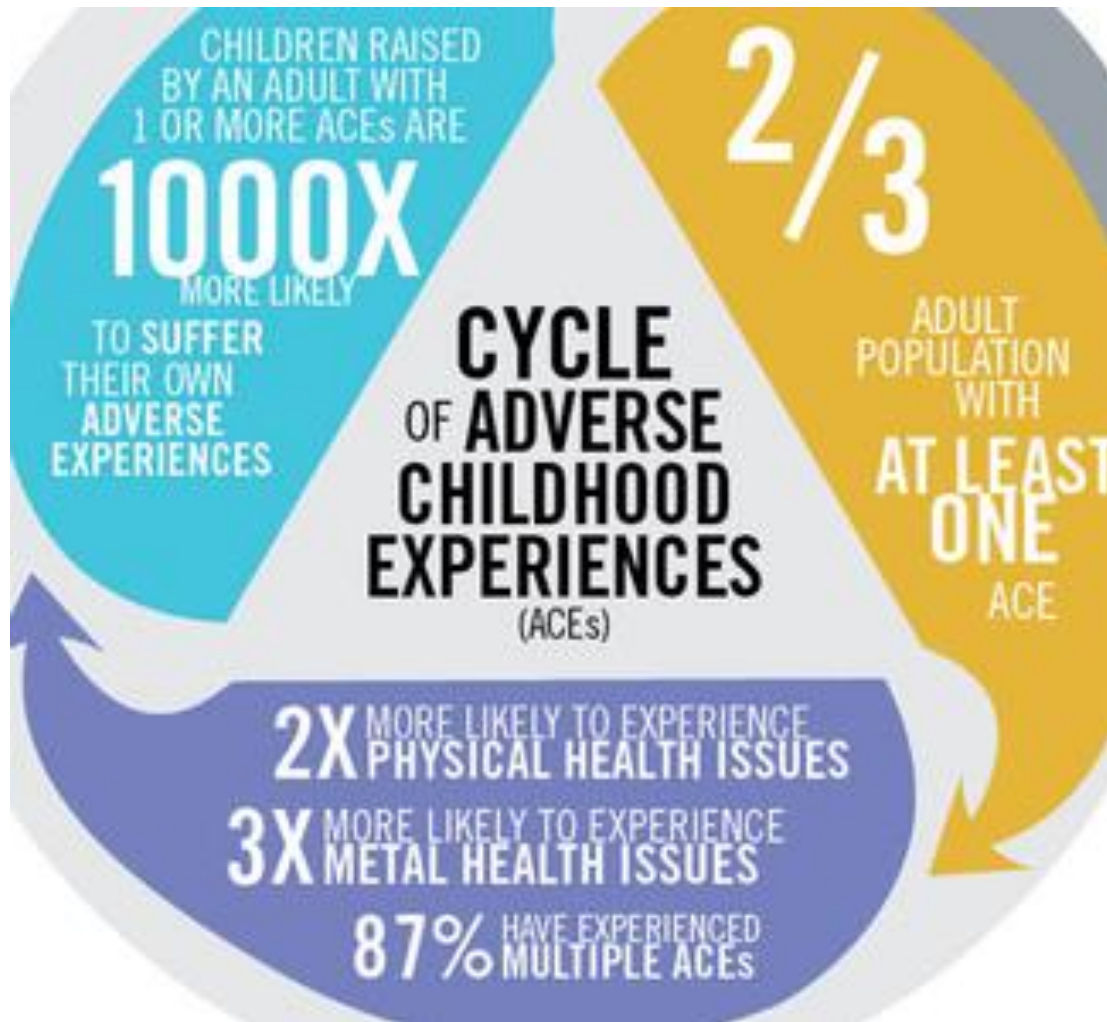


Anticipatory Guidance

Developmental Play Groups
Developmental Screens
Link Letters
Paired well-child visits
Newborn Behavioral Observation
Arizona Parent Kit
Child Development Warm Line
Attachment, Bonding and Communication Parent Workshops

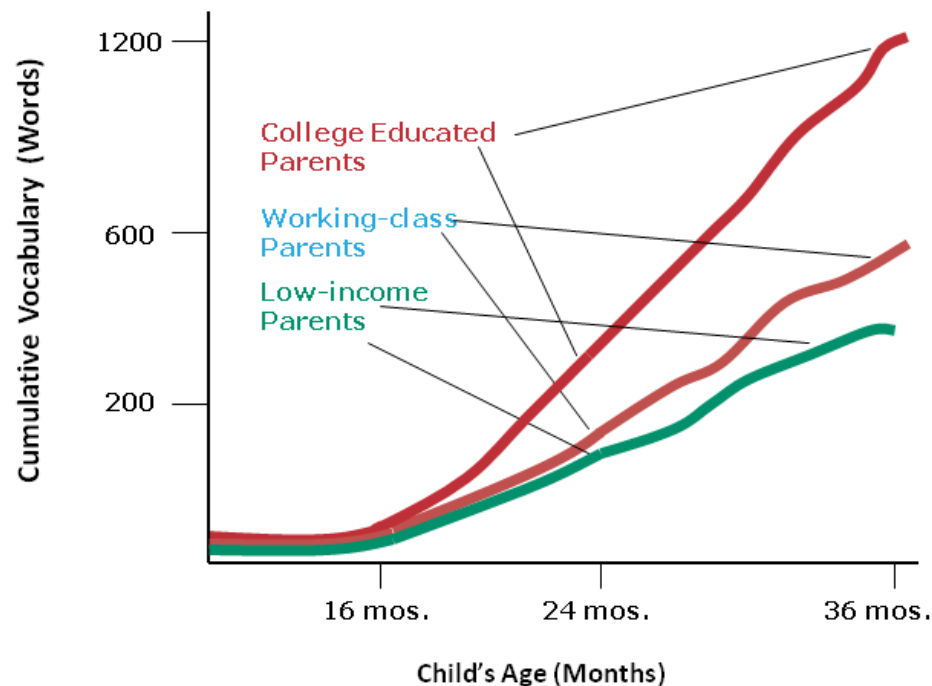
Supporting Parents' Confidence and Competence

Adverse Childhood Experiences



Language Development

Disparities in Early Vocabulary Growth



Source: Hart & Risley (1995)

Literacy Matters

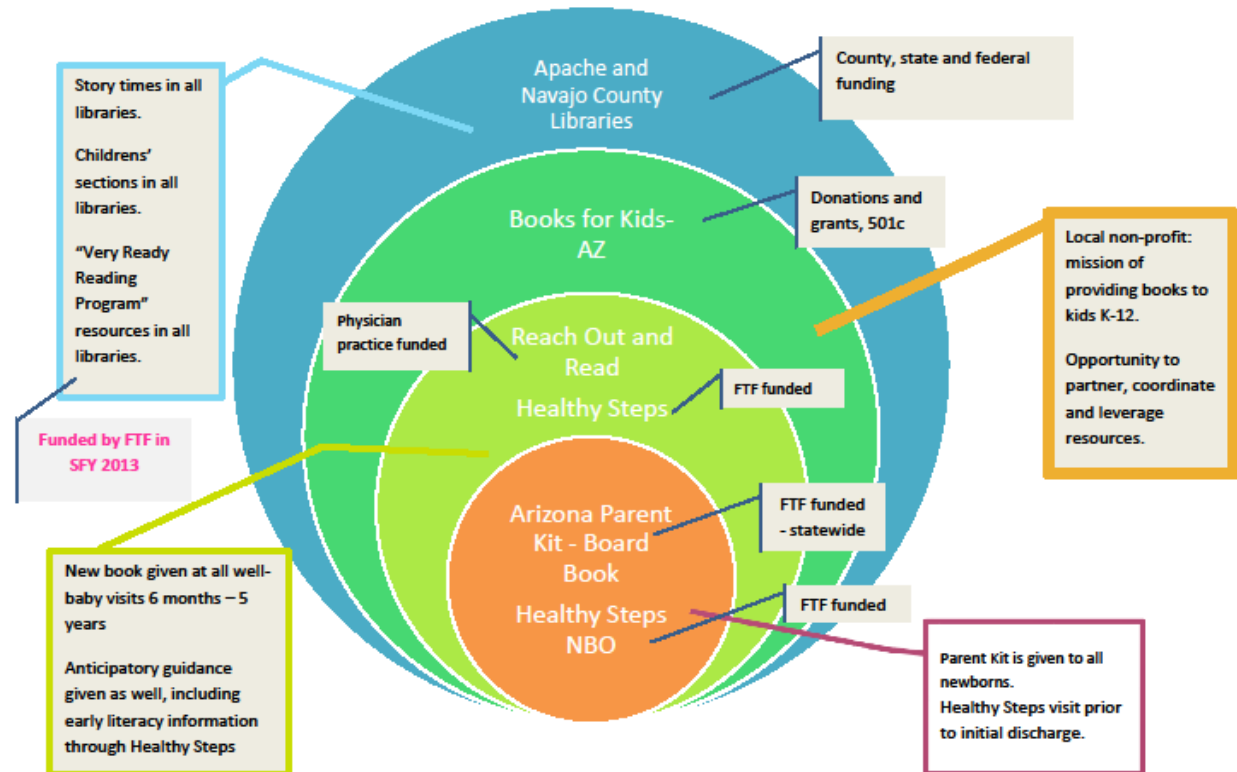
2/3

of students who cannot read proficiently by the end of the 4th grade will end up in jail or on welfare.

The 4th grade is the watershed year. We can predict that if a child is not reading proficiently in the 4th grade, he or she will have approximately a 78 percent chance of not catching up.

Navajo/Apache System

Early Literacy FY 2019



Serve and Return

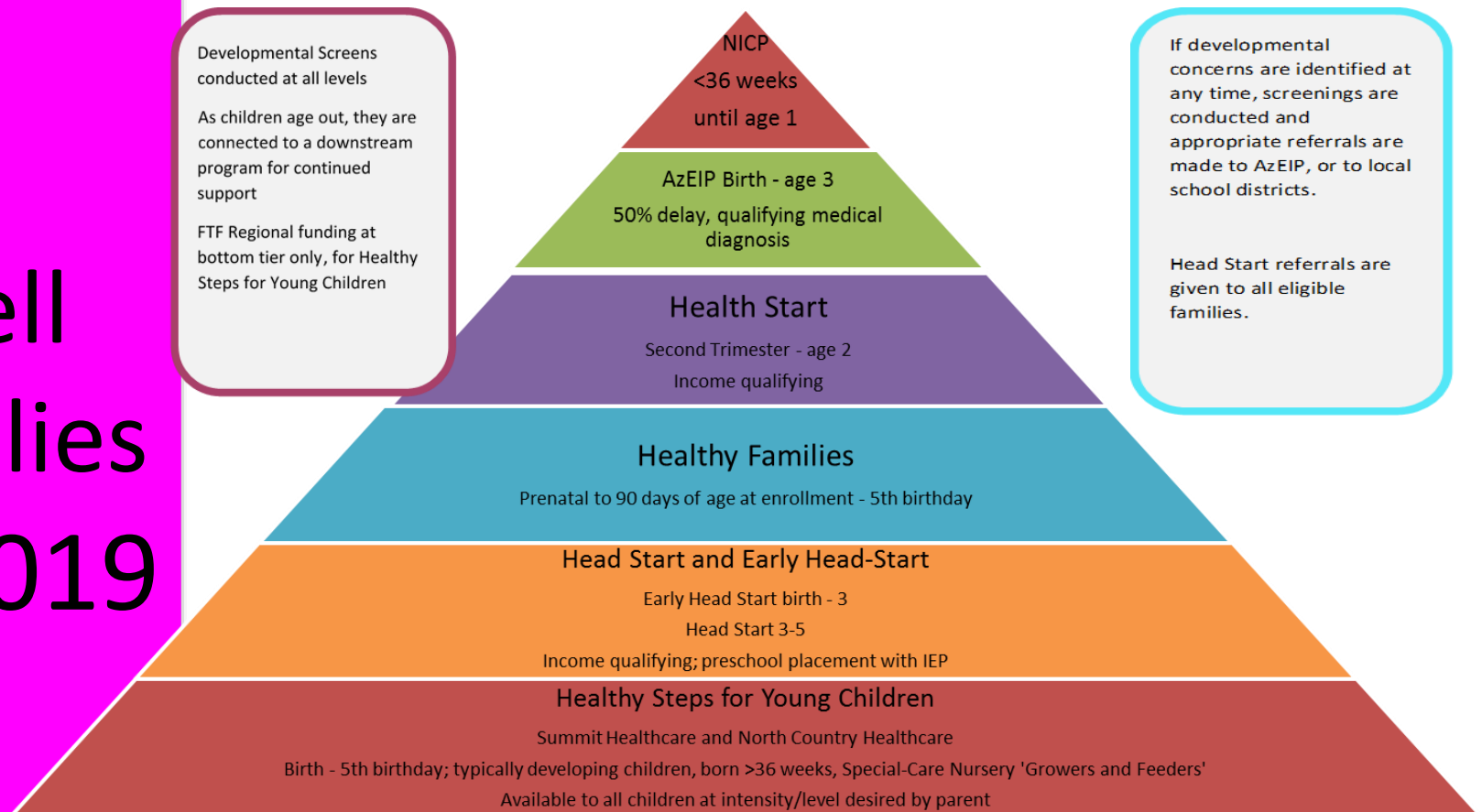


2. Serve & Return Interaction Shapes Brain Circuitry.mp4



Navajo/Apache System

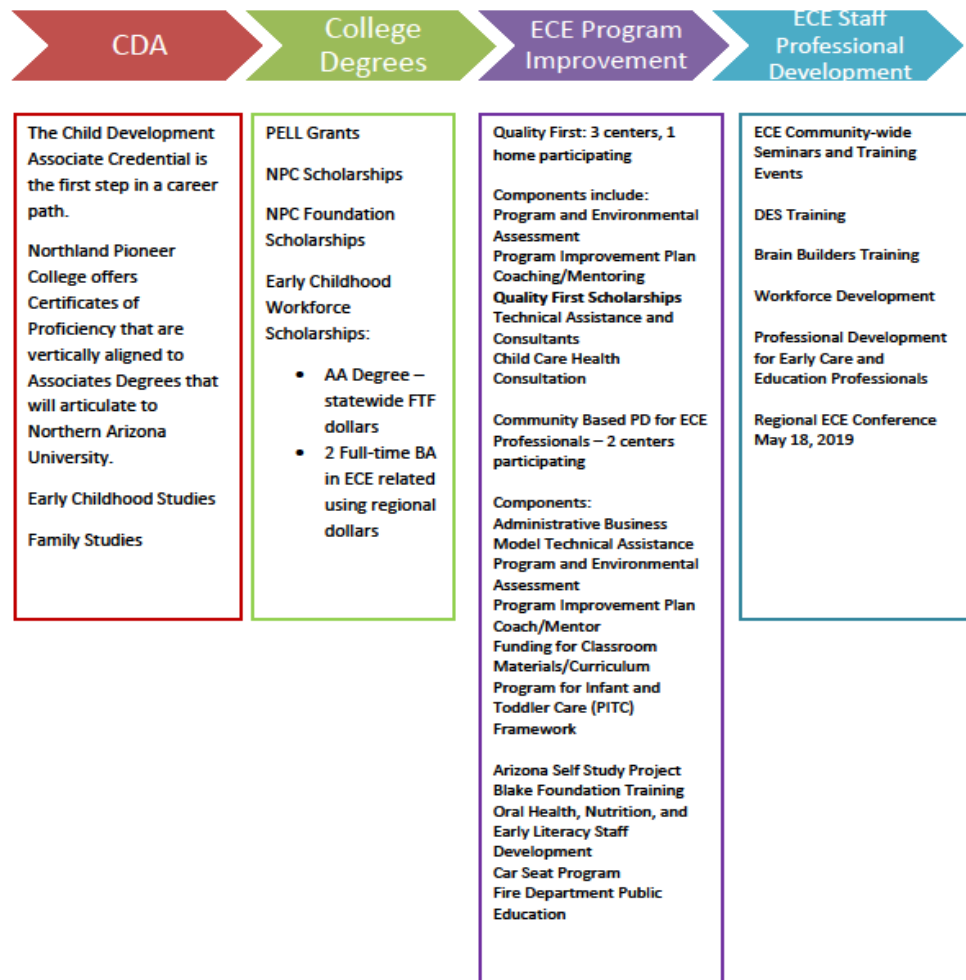
Well
Families
FY 2019



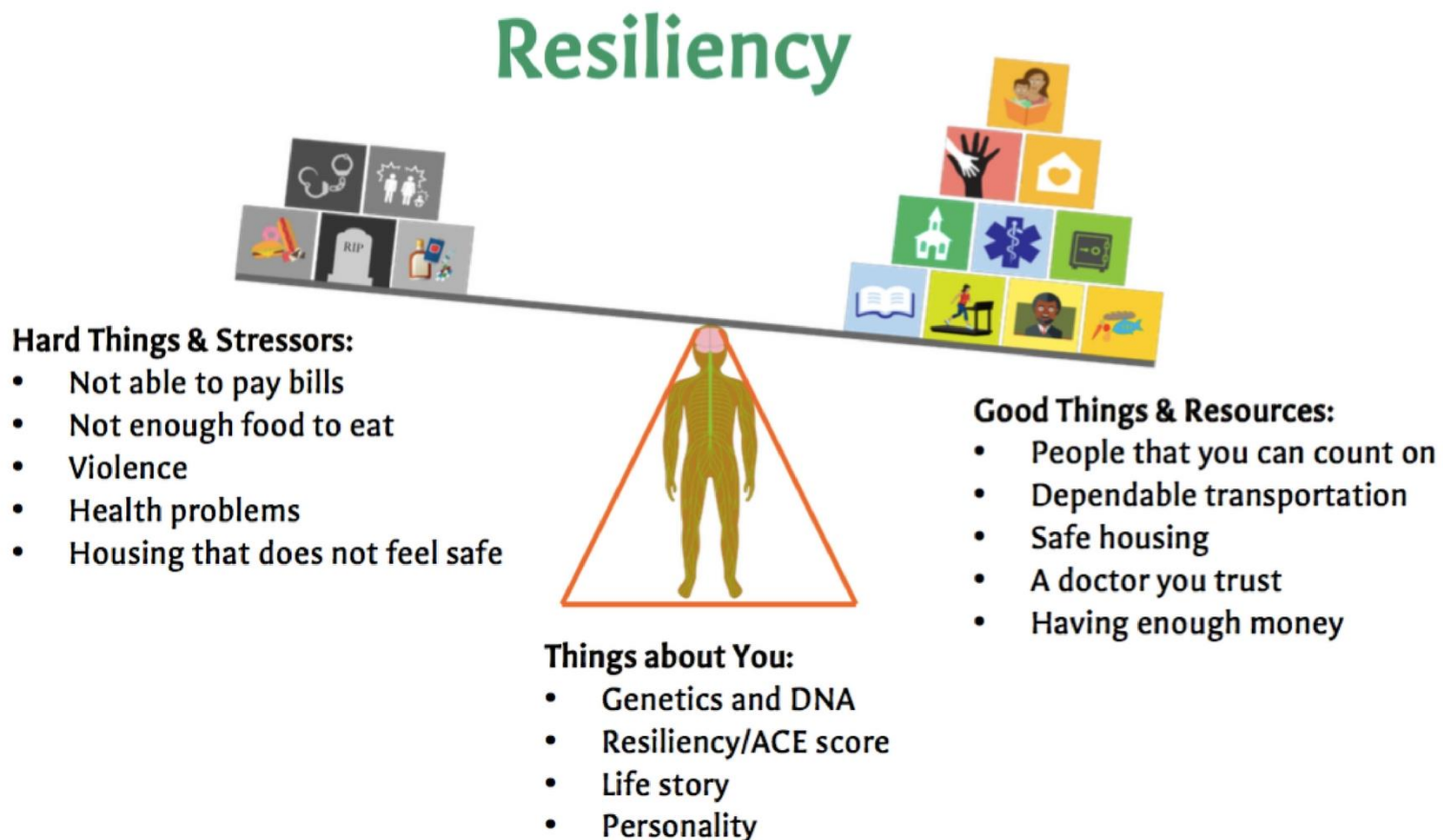
School Systems – Charter, Private, Public
General Population: Kindergarten – High School
Special Needs: age 3-22

Navajo/Apache System

Professional Development FY 2019



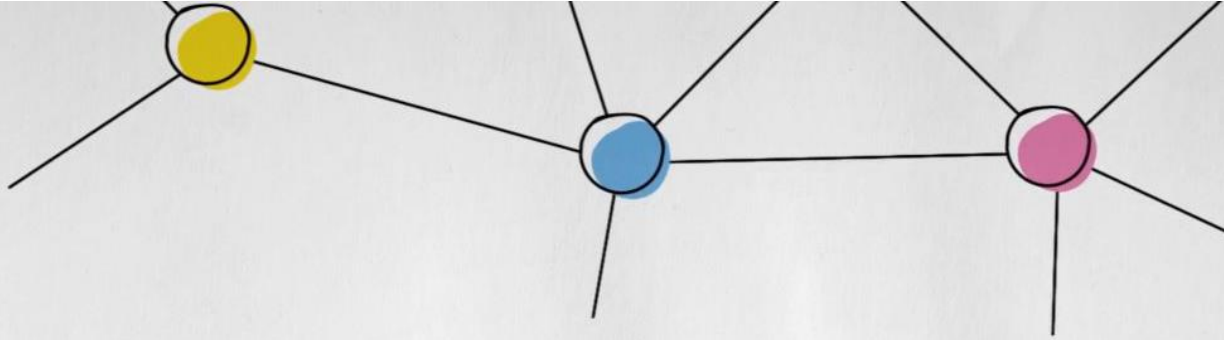
Adverse Childhood Experiences



Resiliency is when the scale tips toward the good even when there are stressors and hard things.



Brain Development

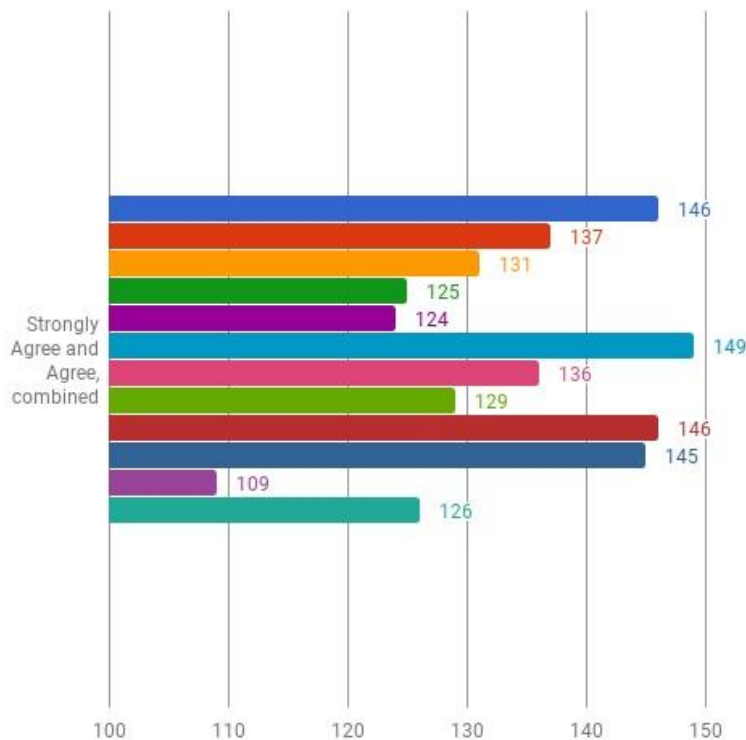


How does healthy brain development happen?



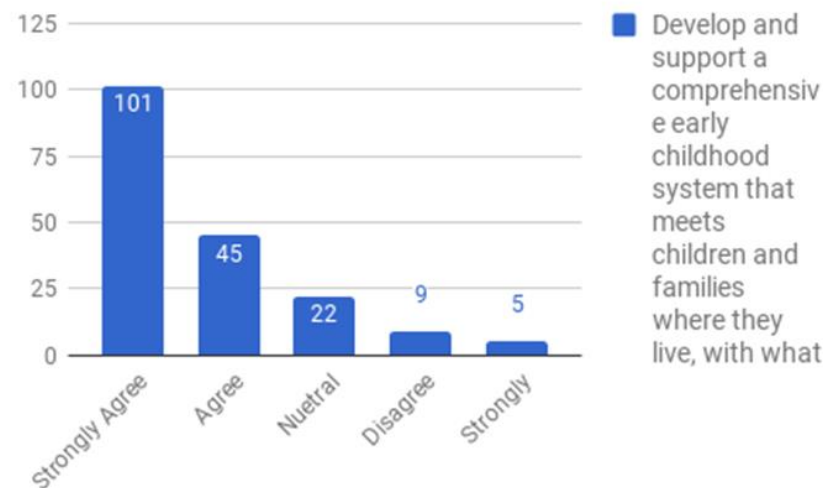
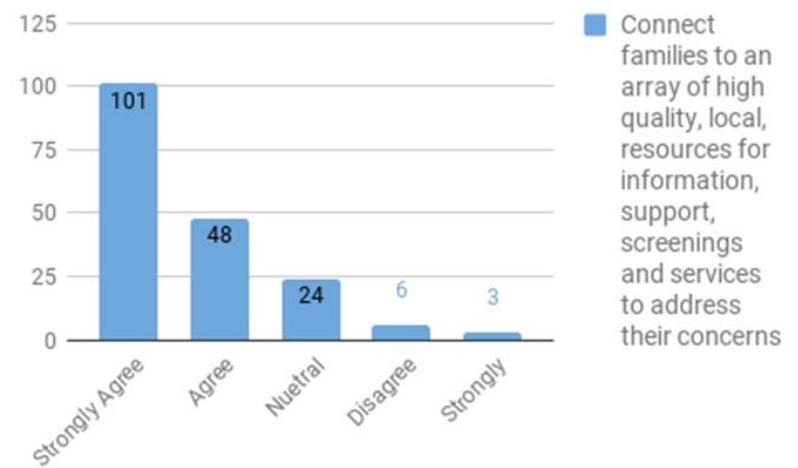
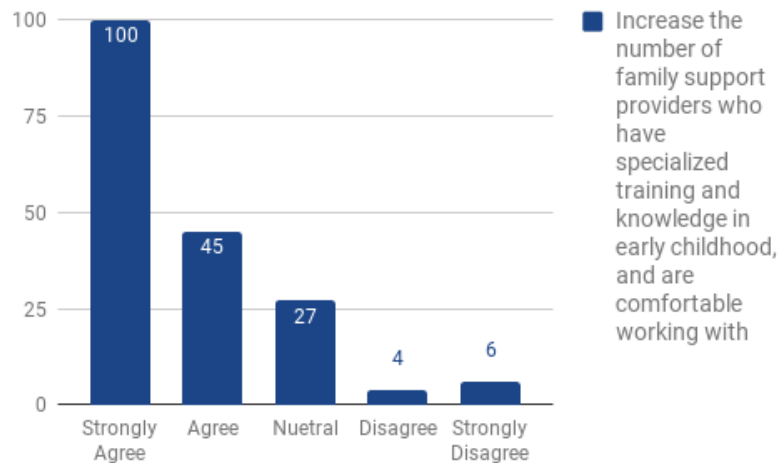
Think
Out of the
Box

Data Driven Strategic Planning



- Develop and support a comprehensive early childhood system that meets children and families where they live, with what they need.
- Work with partners to support a system of medical, dental, and mental health providers available to young children and their families.
- Collaborate with partners to increase the number of primary care medical providers available to young children and their families.
- Collaborate with partners to increase the number of dental providers available to young children and their families.
- Increase awareness of the importance of early developmental, hearing and vision screenings for young children.
- Connect families to an array of high quality, local, resources for information, support, screenings and services to address their concerns or questions.
- Provide relevant information and education on the critical importance of early childhood
- Support the early childhood professional development system to make high quality training
- Increase the number of health providers who have specialized training and knowledge in early
- Increase the number of family support providers who have specialized training and knowledge in
- Use statewide and local early childhood system data to design and continuously improve the early
- Partner and advocate for resources required to develop and sustain a high quality early childhood

Data Driven Strategic Planning



Data Driven Strategic Planning



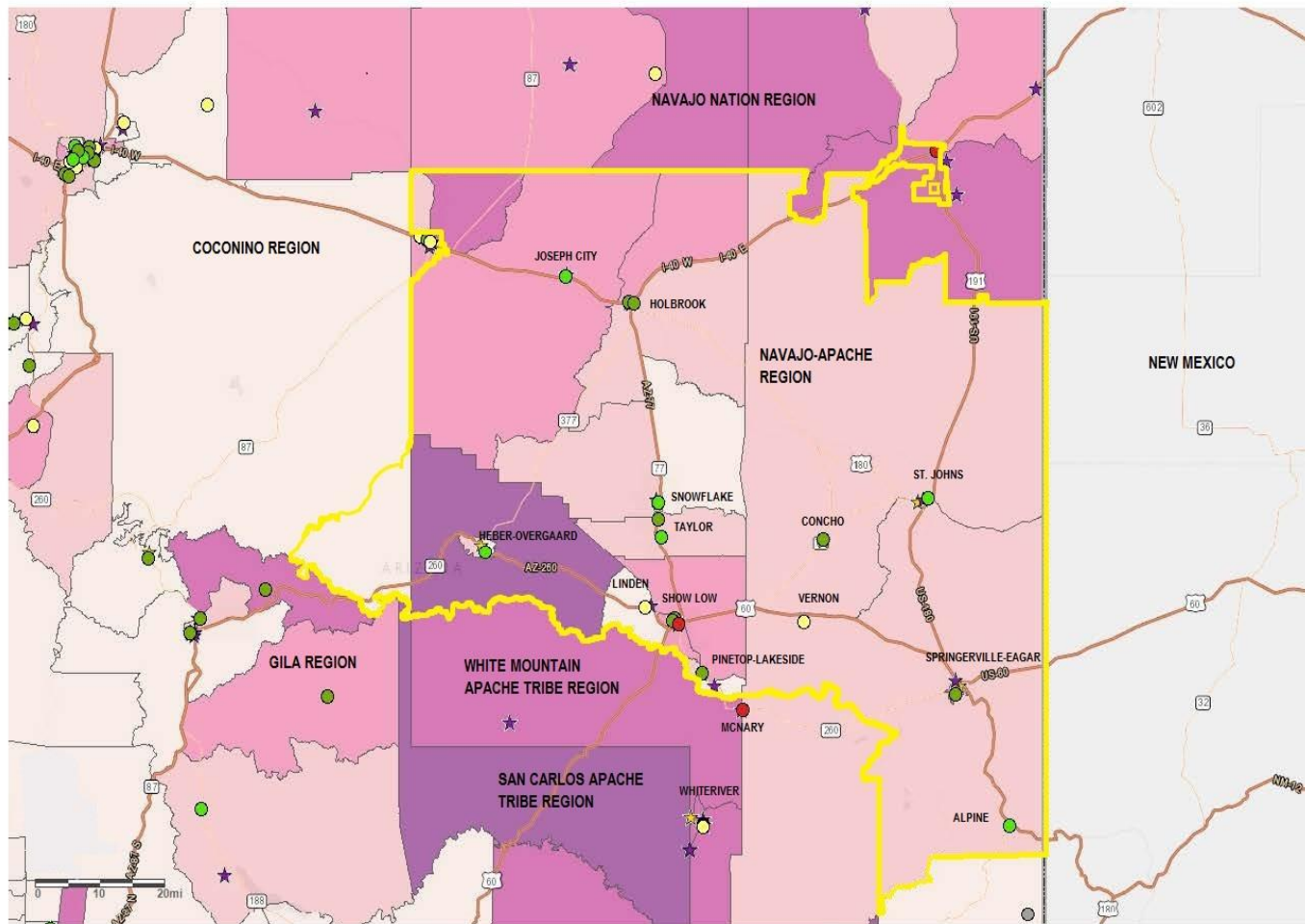
Make
the data
real

Data Driven Strategic Planning



Let's
explore!

Data Driven Strategic Planning



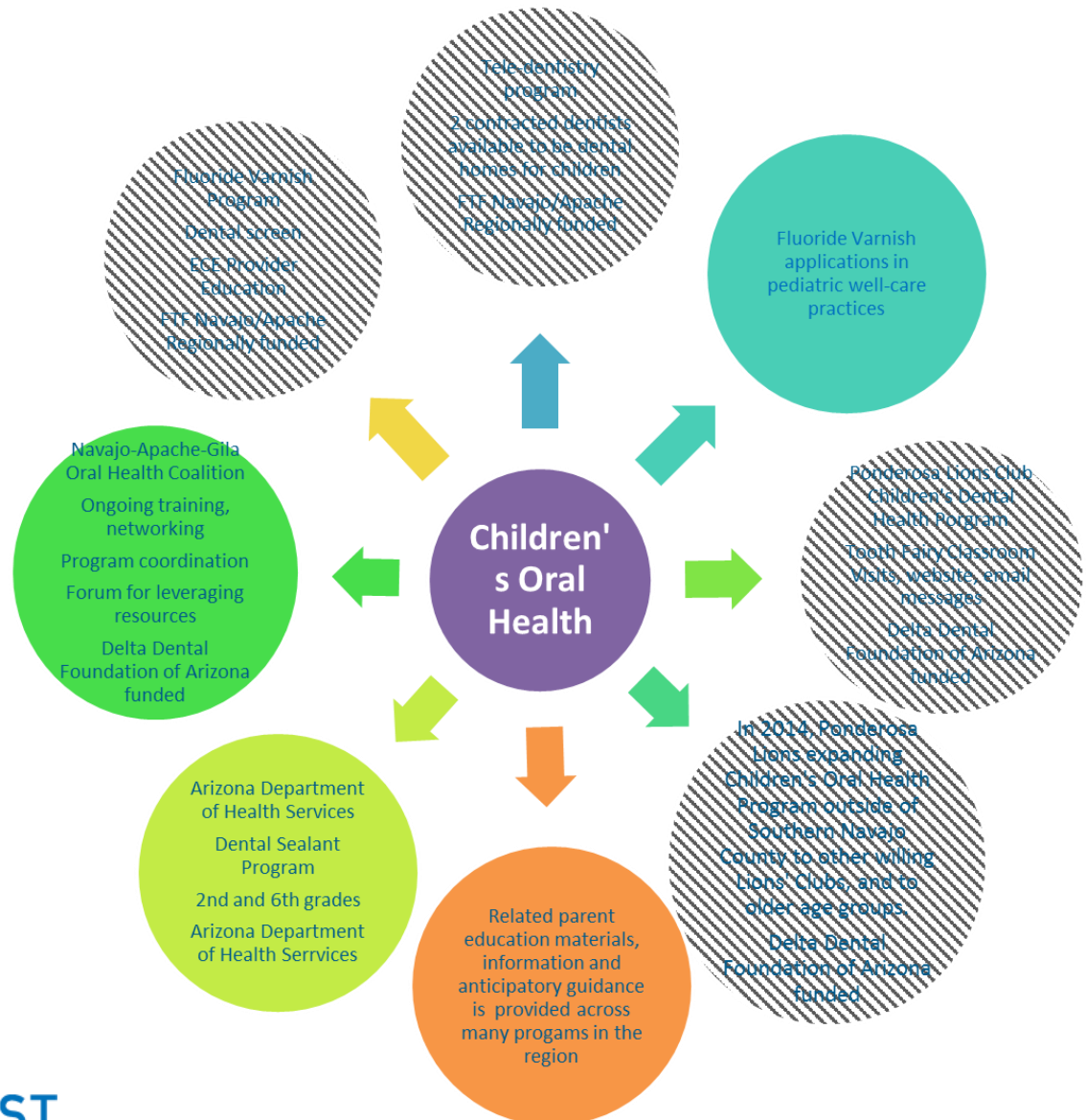
Navajo/Apache System

Oral Health FY 2015

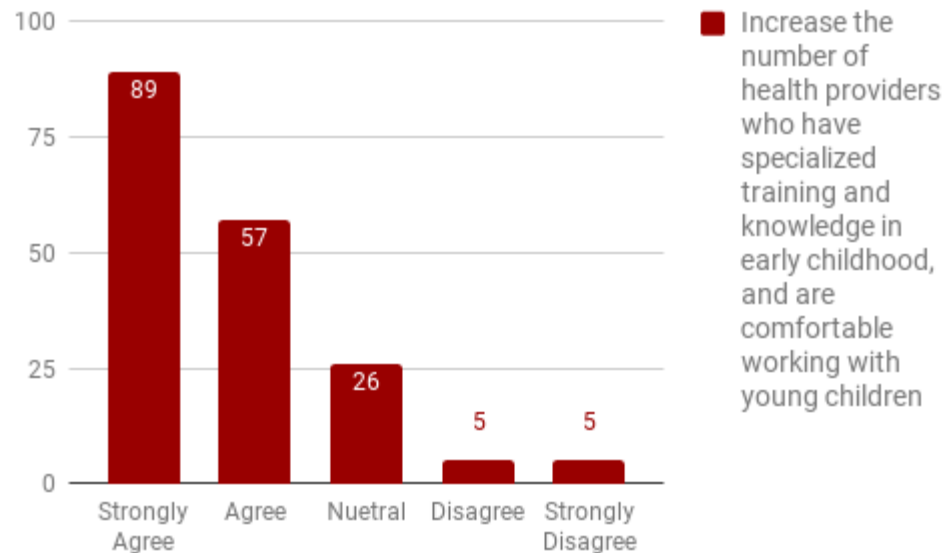


Navajo/Apache System

Oral
Health
FY 2019
So
now
what...

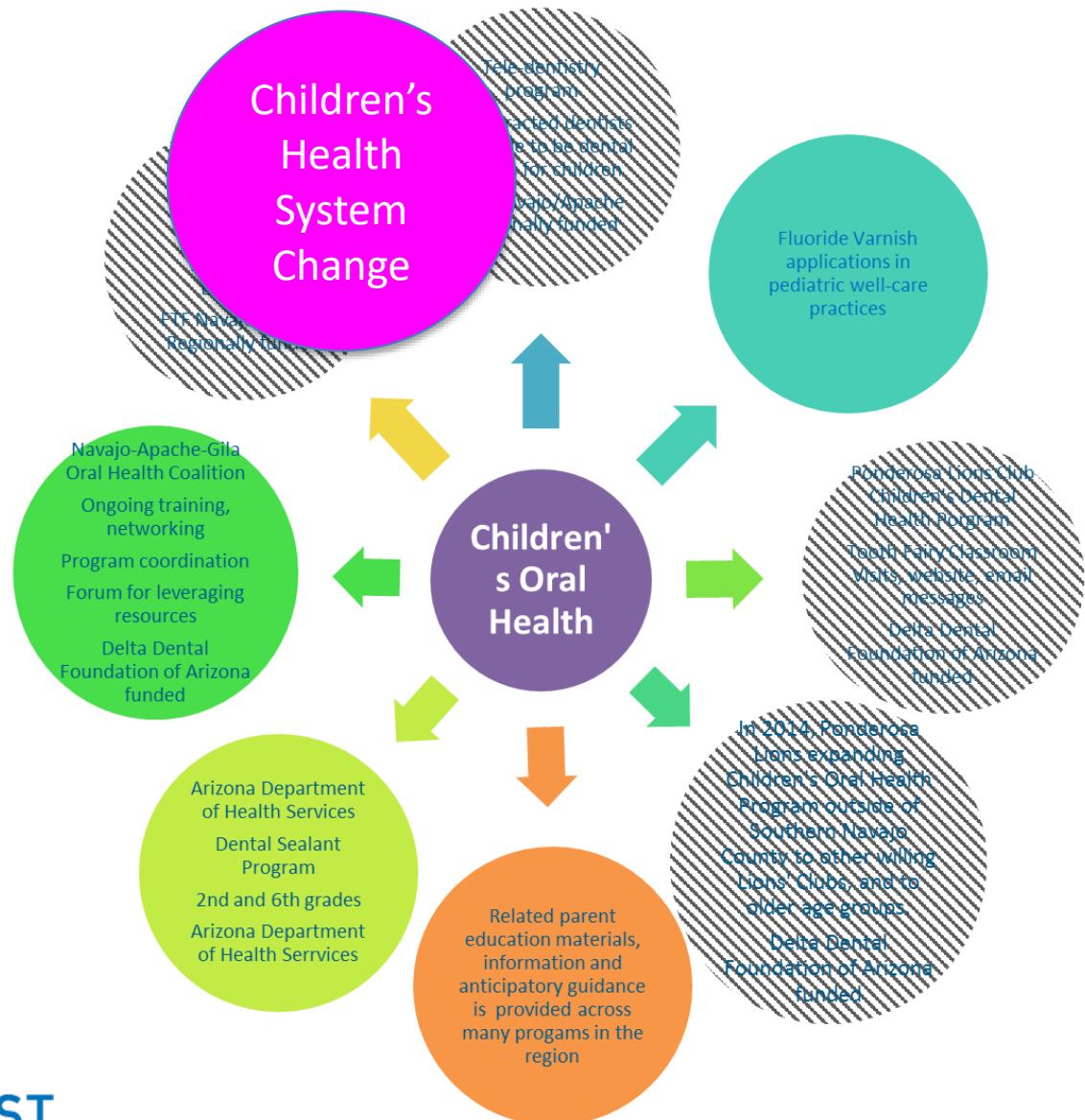


Data Driven Strategic Planning



Navajo/Apache System

Build Oral
Health
Infrastructure
through
Children's
Health
System
Change



What does that mean for me?

What one new
thing have you
learned?

Why did it
resonate with
you?



THANK YOU!

Kate Dobler, BS, CPM, IMH-E®(II)

kdobler@firstthingsfirst.org

928-532-5041



azftf.gov



@AZFTF



/AZFirstThingsFirst