

# AZ MULTI-TIER SYSTEM OF SUPPORTS (MTSS)

## FACT SHEET

### MTSS IS...

- ✓ An instructional system with a tiered infrastructure that uses data to help match academic and social emotional supports to address the needs of the whole child.
- ✓ Uses Universal Design for Learning, differentiation, and integrated academic, social-emotional, and behavioral supports at all levels.
- ✓ A proactive, responsive, and equitable system of support.
- ✓ The use of a set of evidence-based practices and procedures in curriculum, instruction, and assessment.
- ✓ Whole system engagement and integrated use of all adults and resources.

### MTSS IS *NOT*...

- ✗ Just help with academics or an extra class period
- ✗ Just behavior supports.
- ✗ The job of a few specialists.
- ✗ Intervention in place of the core curriculum.
- ✗ A buffet for staff to choose what pieces they would like to implement and *if* they would like to implement.
- ✗ The process for the determination of eligibility for entitlement programs (special education, ELL, gifted, etc.).
- ✗ Something that is *done to* students.

### TEACHER TRAINING IN MTSS CAN HELP SCHOOLS...

- Assess the needs of all students, not just those who are outwardly struggling.
- Monitor student progress data and use this data to make decisions.
- Address the underlying academic or social-emotional needs of students.

**Excellence + EQUITY**  
**All Means All**

### UNIVERSAL SUPPORT

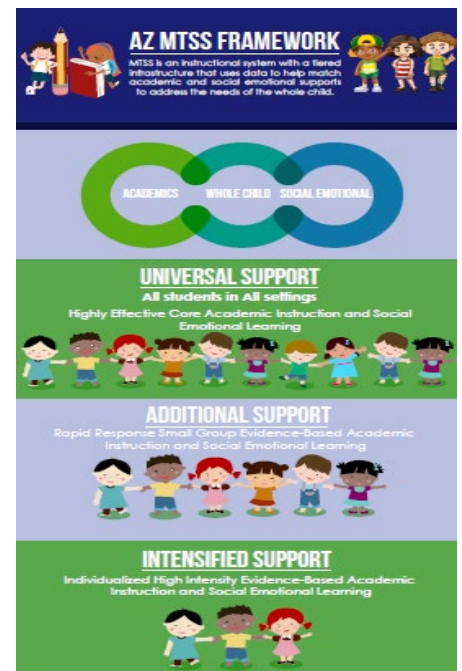
Highly effective core academic instruction and social-emotional learning

### ADDITIONAL SUPPORT

Small group evidence-based academic instruction and social-emotional learning

### INTENSIFIED SUPPORT

Individualized, high intensity evidence-based academic instruction and social-emotional learning



  
Support and Innovation  
Improved Outcomes for All