

Migrant Education Program



2019 Practitioners of English Language
Learning - PELL

September 13, 2019



Migrant Education Program Team

Making Connections within our community



#88035044

Agenda

- About the Migrant Education Program
- Arizona Statistics
- Eligibility Criteria
- Arizona Agriculture
- Providing Services
- Next Steps
- Life of an Arizona Migratory Student

Federal Title I, Part C

Mission

Our mission is to impact teaching and learning in K-12 classrooms so that migratory students achieve high academic success.



Purpose

Our purpose is to ensure that migratory children fully benefit from the same free public education provided to other children. To achieve this purpose, the MEP helps SEAs and LEAs address the special educational needs of migratory children to better enable them to succeed academically.

Acronyms

Acronym	Meaning
CAMP	College Assistance Migrant Program
LEA	Local Educational Agency
MEP	Migrant Education Program
OME	Office of Migrant Education
PAC	Parental Advisory Council
SEA	State Educational Agency
SMPAC	State Migrant Parental Advisory Council

<https://youtu.be/MWe5pcavv3Q>

What is the Migrant Education Program?



Are you smarter than a Migrant Education Program staff member?

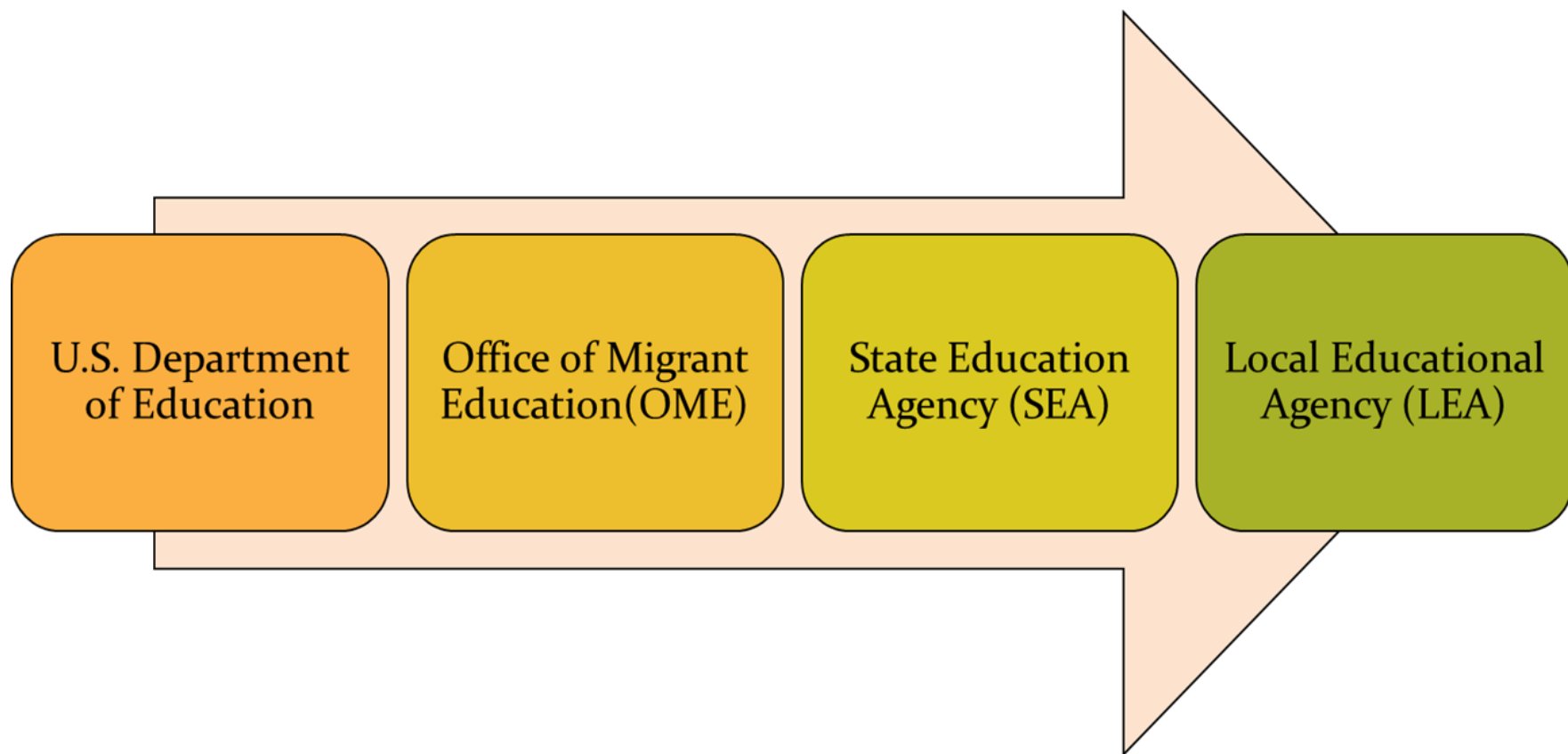


- How many farms are in Arizona?
- What are Arizona's top five agricultural products?
- What is the average hourly rate of an Arizona farmworker?
- How many school districts do we have in Arizona?
- How many of those school districts have a Migrant Education Program?
- Arizona has facilities licensed for growing fish and shrimp. T or F
- Migrant Education Program funds can be used to fund a mobile computer lab for migrant students. T or F

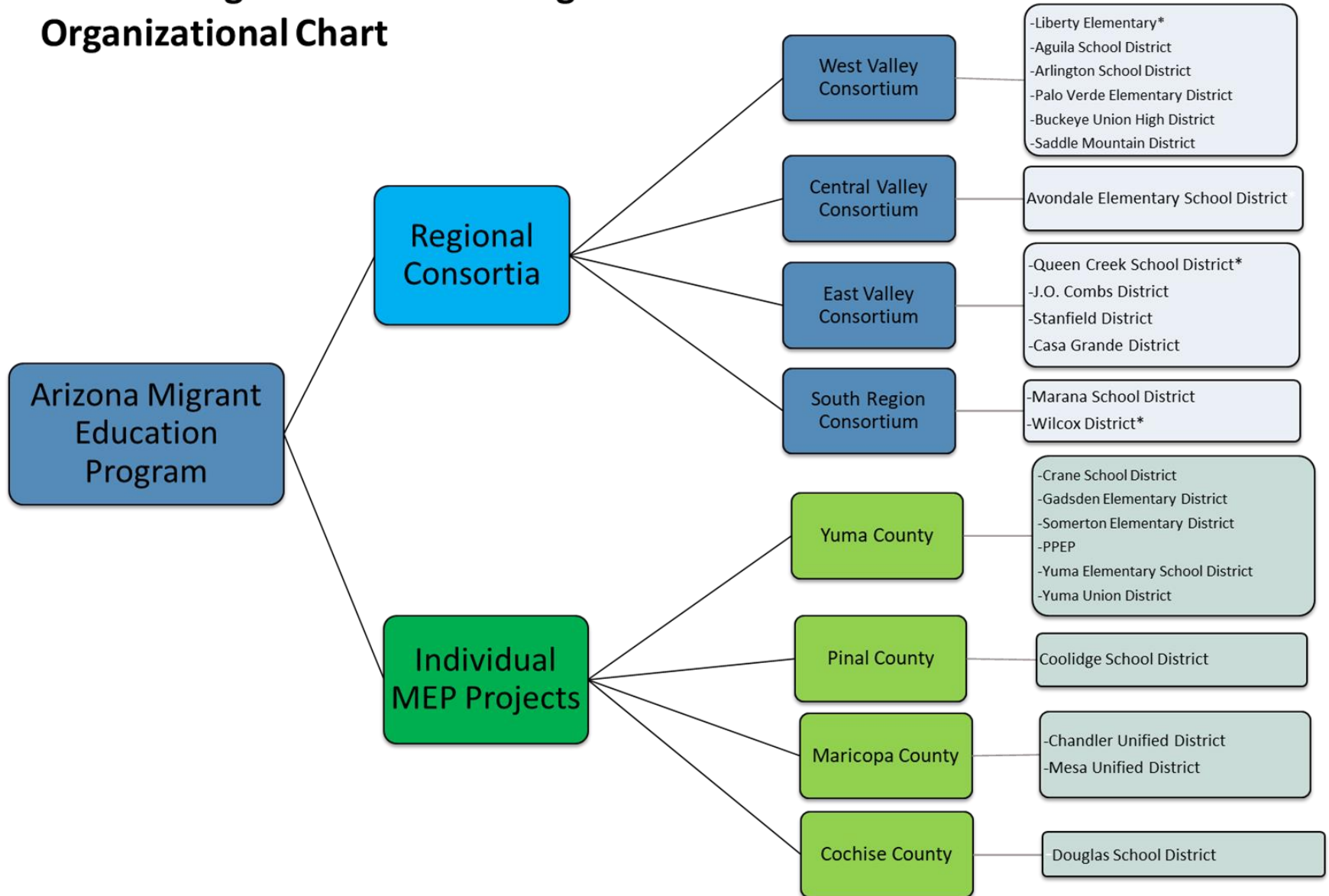
Arizona Migrant Education Program

ARIZONA STATISTICS

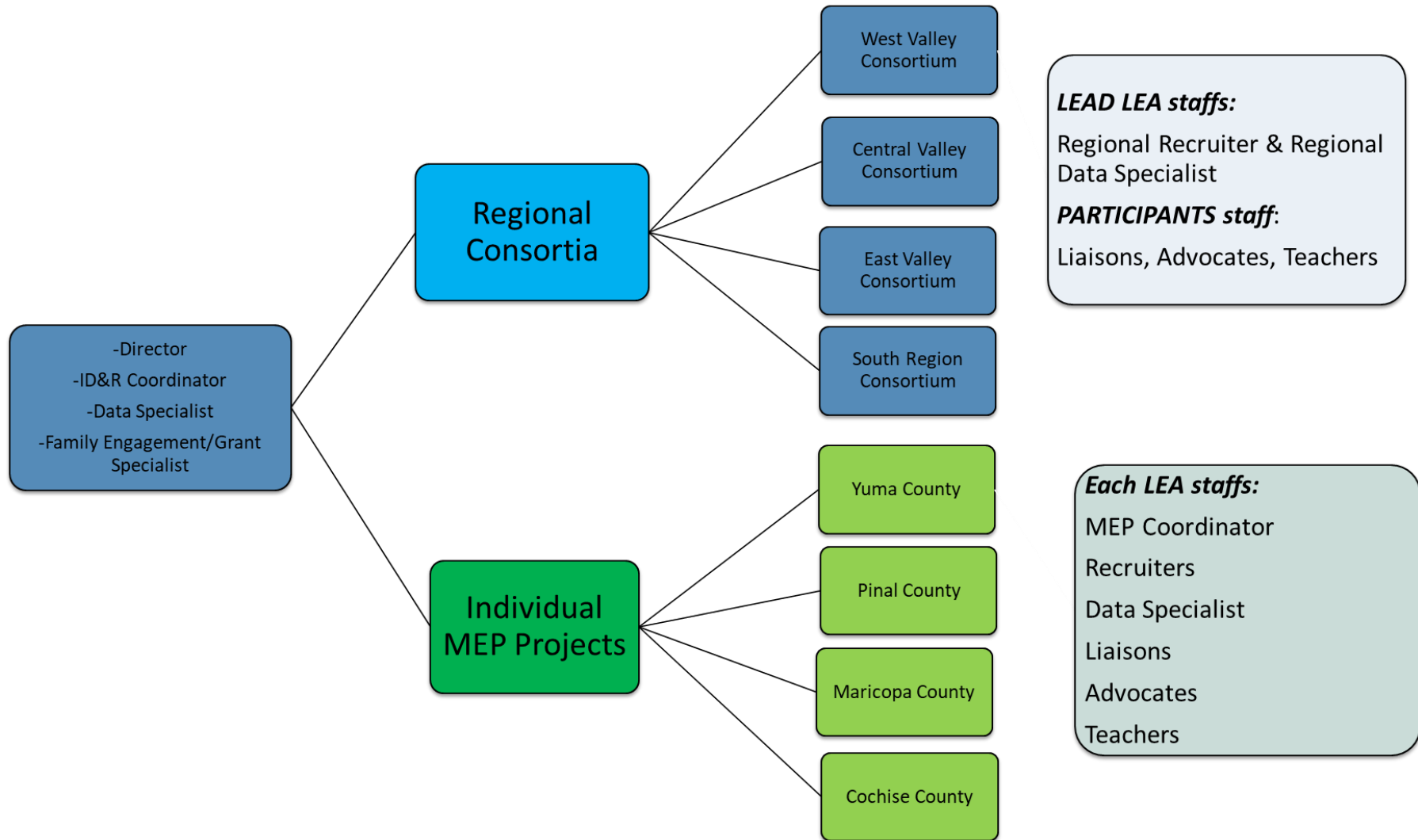
MEP Organization Chart



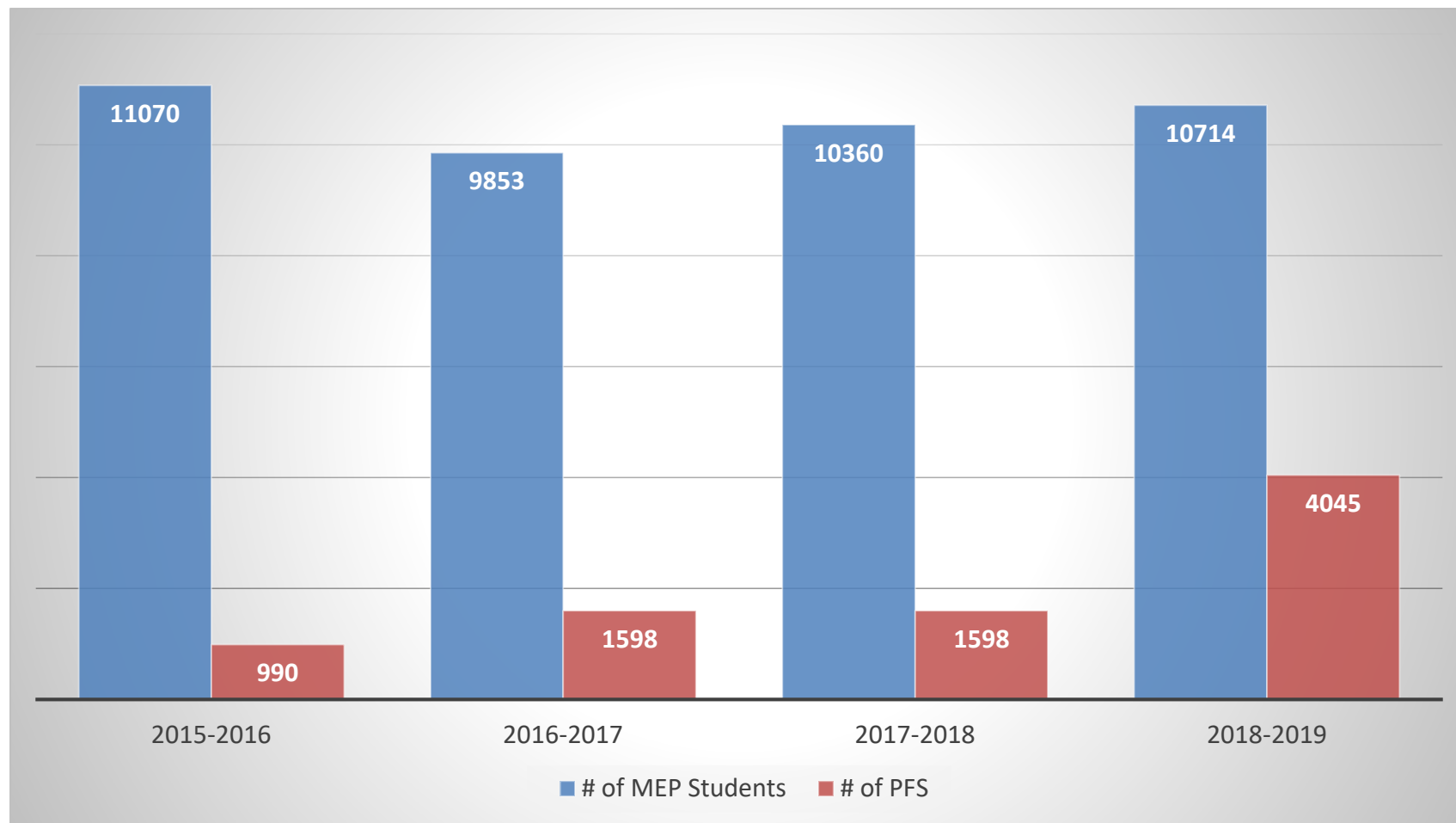
Arizona Migrant Education Program Organizational Chart



Arizona Migrant Education Program



Arizona Counts by School Year



Students by Grade Level

Grade Level	2014-2015	2015-2016	2016-2017	2017-2018
Age 0-2	366	383	330	455
Age 3-5	704	719	447	821
K	459	495	589	514
1	535	529	535	555
2	600	573	562	540
3	610	614	584	588
4	606	636	602	596
5	627	652	605	620
6	549	620	615	635
7	666	674	623	645
8	622	642	637	618
9	772	874	1014	983
10	741	909	940	909
11	764	803	785	933
12	1238	1424	915	888
UG	429	440	69	0
OSY	81	83	1	194
Total	10369	11070	9853	10494

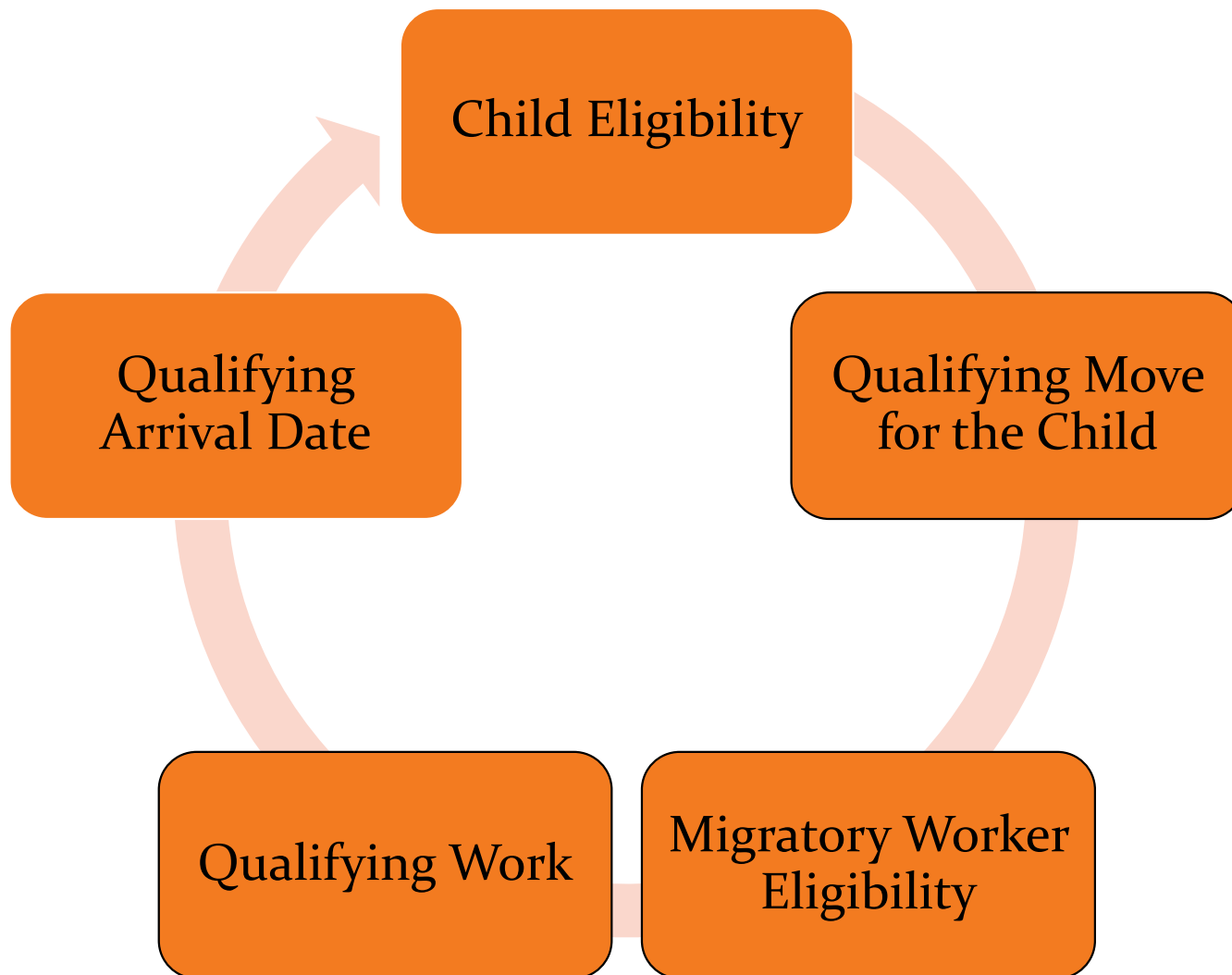
Allocation by LEA

- Funding based on several criteria (# of students, PFS, summer school, alternative funding)
- # of students identified determines the Migrant Education Program Model (Consortia Lead, Participant, Individual Project)
- Regional Consortium Leads receive additional funds for administrative costs
- Student Counts – August 31st thru September 30th

Arizona Migrant Education Program

ELIGIBILITY CRITERIA

How do students qualify for the MEP?



Migratory Child

Section 1115(c)(1)(A) incorporated into the MEP by sections 1304 (c)(2), 1115(b), and 1309(3) of the ESEA, and 34 C.F.R. §200.103(a)

- Not older than 21 years of age
- Entitled to a free public education (through grade 12)
- Made a qualifying move as/with/to join a Migratory Worker
- The move was within 36 months of the interview





Migratory Agricultural Worker

Section 1309 (2) of the ESEA

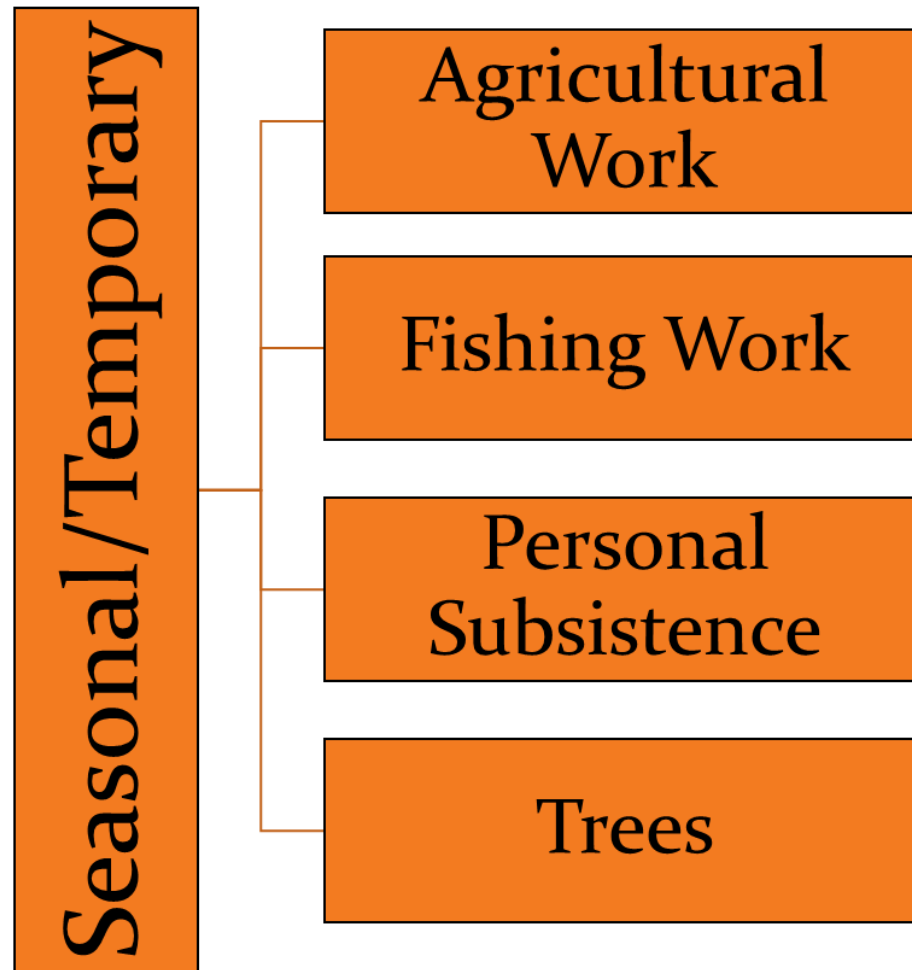
- In the preceding 36 months made a qualifying move, due to economic necessity, AND Engaged in qualifying work within 60 days of the move

OR

- In the preceding 36 months made a qualifying move and actively sought qualifying work AND has a recent history of moves (2) that resulted in qualifying work

Qualifying Work

34 C.F.R. §200.81(n)



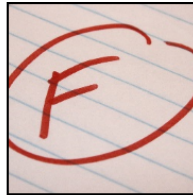
Priority for Service (PFS)

Section 1304 (d)



Mobility

- The student has made a qualifying move within the previous 1-year period.



Failing or Most at Risk of Failing

- Disabled/IEP
- Poor Attendance
- Retention
- Age/Grade
- Credit Deficient
- LEP/NEP (Non-English Speakers)
- Low Performance
- Pre-K(not served)
- Suspension
- Expulsion
- Trauma
- Is a Migratory Agricultural Worker



Out of School Youth

- Under the age of 22
- Has not graduated high school
- Currently not attending school
- Classified as having dropped out of school(USA school)
- The student is here as a Migratory Agricultural Worker

Arizona Migrant Education Program

ARIZONA AGRICULTURE

Where does it grow?

While agriculture exists in each of the 15 counties of Arizona, production is focused in seven counties:

- Cochise
- Graham
- La Paz
- Maricopa
- Pima
- Pinal
- Yuma



What do they grow?

- Cochise, La Paz, and Pima counties are all producers of cotton, barley, durum wheat, alfalfa hay, and cattle.
- Graham County also produces these crops and is AZ's leading producer of greenhouse tomatoes.
- Pinal County is the State's top producer of cotton and the location of many sheep ranches.
- Maricopa and Yuma counties lead the State in agricultural production.
- Yuma County produces vegetables including lettuce, spinach, and broccoli, and other baby vegetables, as well as melons and citrus fruits.
- Maricopa County has become a leading producer of dairy but has generally seen a decline in the total amount of acres available for crop production.

A lot to be proud of!

Arizona is a top producer of the nation's fruits and vegetables and continues to be the winter lettuce capital of the world all while continuing to be recognized as a world-class leader in water management!



Year Round

Arizona produces food all year long – from the high country, to the desert, to the lush river valleys. There is always something – fruits, vegetables, dates or nuts – being harvested from January to December.



Arizona Map



AZ Master List of all ag points.csv



Farm/Ranch

Dairies

Nurseries

Farm

Cattle

Citrus

Harvest Labor

Produce Packers

Dates

Bees

Grapes

Fish

Eggs

Sheep

Roses

Livestock Market

Pecans

Pistachio

Agriculture Labor Housing

Fruit and Tree Nut Farms

Other / No data

Packing Plant

Vegetables

Meat Processing

Tomatoes

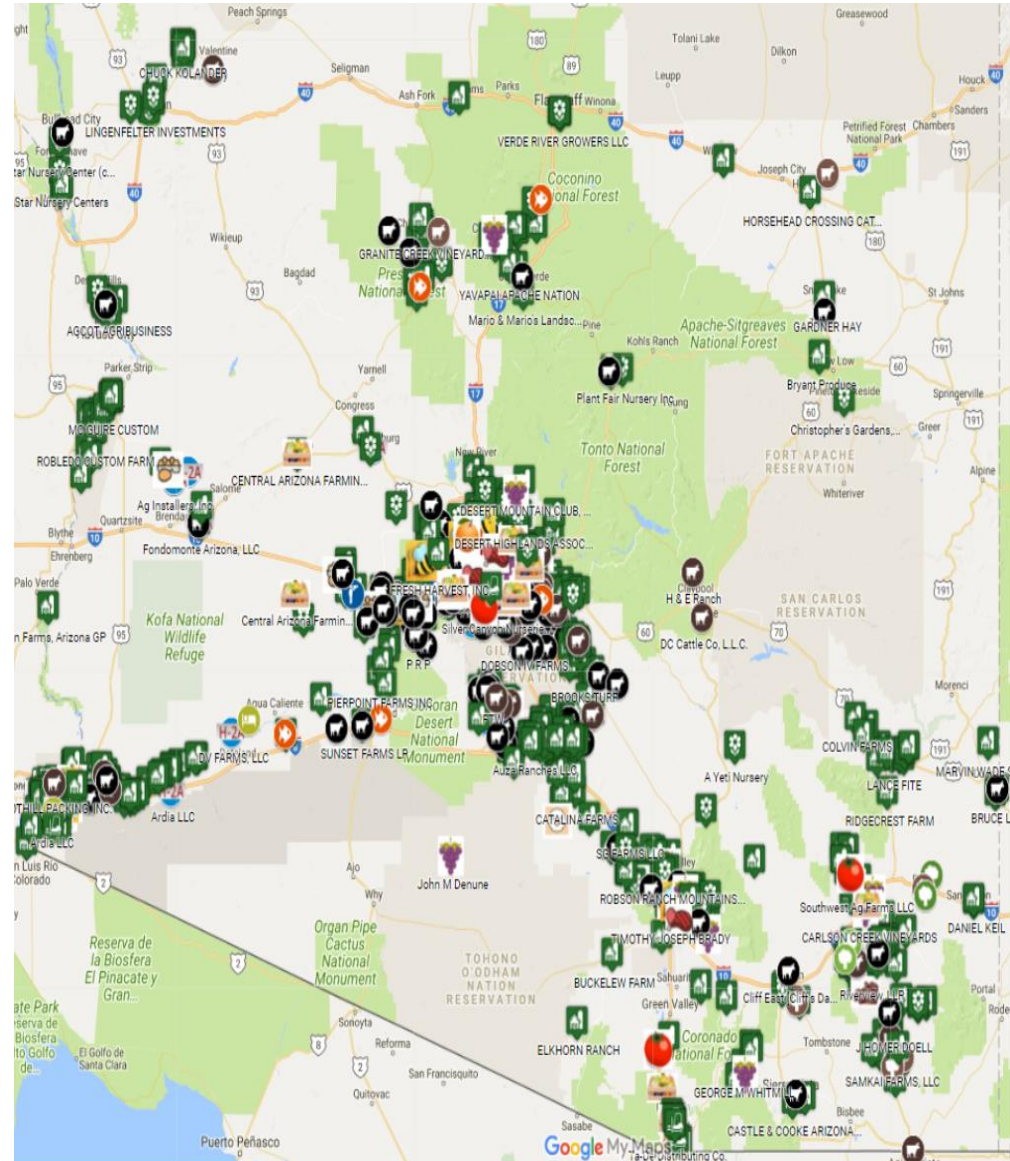
Nurseries

Fruit Processing

Pistachio Farms

Citrus

Fruit Packing



Arizona Harvest Schedule

ARIZONA AGRICULTURE REVIEW

- Beef Production
- Dairy
- Egg Production
- Vegetables
- Fruits
- Pecan/Nut Growers
- Nurseries
- Cotton Growers
- Grains
- Alfalfa (Local & International export)
- Aquaculture (fish and shrimp)



Arizona Harvest Schedule

Corn

In a deal currently still in the making, Monsanto has purchased 155 acres of farmland, part of the long-established Kai Family Farm in Marana, where a 30-foot-tall greenhouse will be housed along with ancillary facilities and traditional ground production.



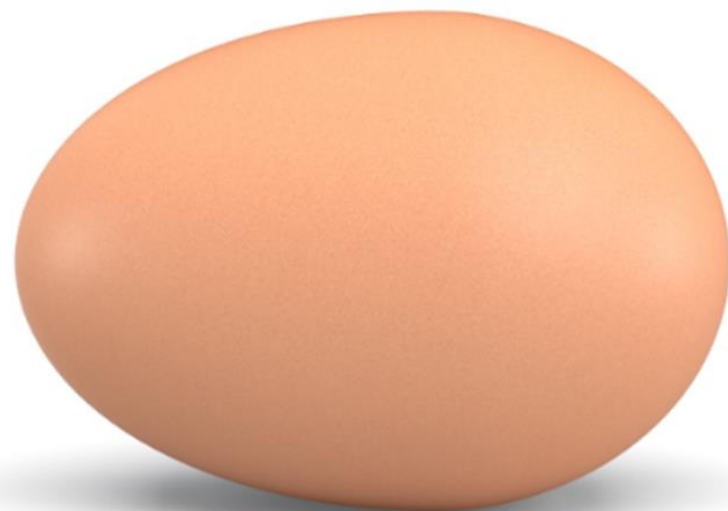
Dates

The Yuma area grows more Medjool dates than anywhere else in the world.



A Rosy Outlook for a “Cactus Farm”

- Beginning in 2017, another family-owned company, Rose Acre Farms, will produce eggs in La Paz County. As the second largest egg producer in the U.S., the Rust family began the company from its home in the 1930s.
- The Rose Acre Farms Bouse-area facility could eventually hire 80-100 employees in the farm’s first development stage. Rose Acre Farms expects to produce eggs at the Lone Cactus Egg Farm.



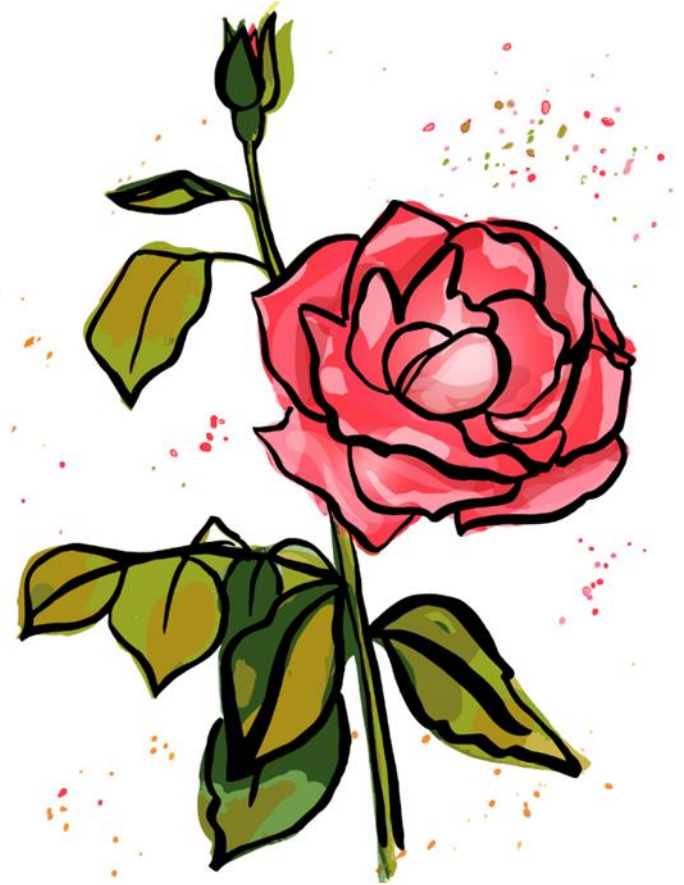
Vegetables

The area may be best known for its lettuce, as “America’s Winter Lettuce Capital,” but Yuma County grows more than 40 kinds of vegetables and melons on more than 90,000 acres of land every year.



Arizona Nurseries: The Desert in Bloom

Arizona can claim the status of the largest rose bush grower in the nation. More than 70% of the rose bushes any American can buy at a garden center are coming from Arizona.



Pecan Nuts

The largest grove of irrigated pecan trees in the world lies just south of Tucson, where it's been for the past 75 years. Green Valley Pecan Company maintains nearly a quarter of a million nut trees, 125,000 of them in their 12-mile-long, 7,000 acre property in Sahuarita.

Once established, with production beginning after three to four years, trees can be productive for a hundred years or longer.



Activity #2

Funding

Needs Scenario

- There are three plants described on the next slide, all have needs for water; but you have limited water.
- At your table, discuss what percentage of water you will give each of the plants and why.
- Be prepared to share your decisions with the group.



Needs Scenario (cont.)



- **Plant A** is healthy
- **Plant B** is starting to wilt.
- **Plant C** is seriously wilted.

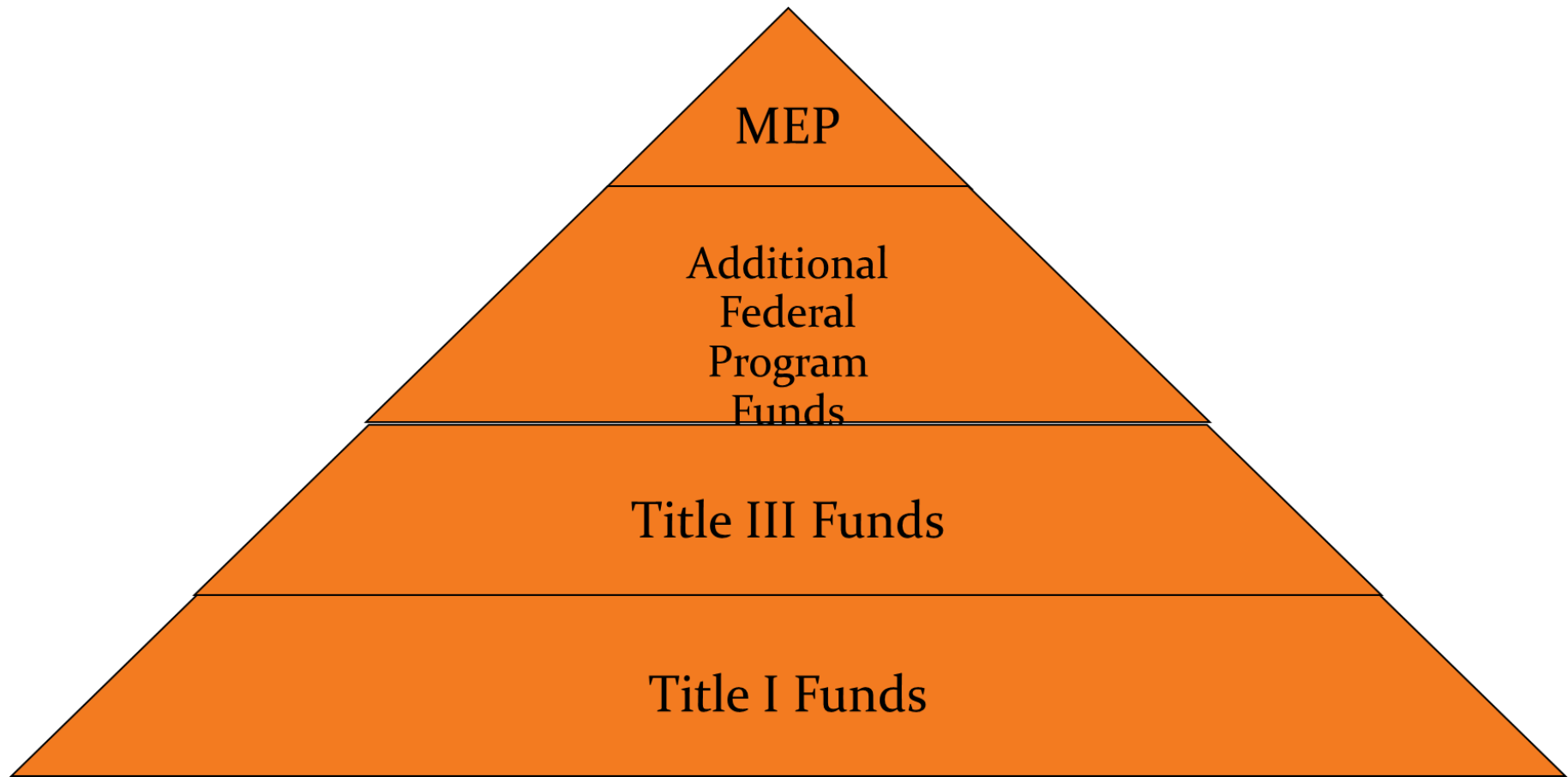
You have enough water to give any one plant the moisture it needs; or you can divide up the water. What will you do?

What % did you assign?

- **Plant A** is healthy _____
- **Plant B** is starting to wilt _____
- **Plant C** is seriously wilted _____



How does funding work?



Aligning Funding to the Service Delivery Plan



Instructional Services

- Instructional programs for English Learners
- Appropriately Certified Teacher to provide instruction in Language Arts, Mathematics, or Reading
- Tutoring – One-on-One tutoring services at a time when a student would not otherwise receive instruction from a teacher
- Extended Day - Instructional delivery that extends the total hours of a school day or week (before and after school programs, Saturday school, evening school)
- Vocational/Career classes – Robotics
- H.S. Credit Accrual/PASS - Instructional courses that accrue credits needed for high school graduation provided by a teacher on a regular or systematic basis
- Youth Leadership programs
- In-home Instruction - MEP personnel provides family literacy to the child at home

Advocate/Liaison

- Full-time staff
- Provides advocacy and support services information to families
- Provides bilingual interpretation and translation
- Conducts home visits to provide developmentally appropriate preschool class at home with a comprehensive curriculum
- Conducts home visits to provide information about grades/assessments
- Encourages parent involvement

Summer School Program

- Must be specific for migrant students only
- MEP funds can pay for teachers and supplies
- Targets students who need assistance in Mathematics, Reading, Writing
- Flexible duration of program (*1 day, 1 week, 3 weeks, etc.*)
- Diverse formats (*home visits, traditional, computer-based lessons*)

Arizona Migrant Education Program

PROVIDING SERVICES

Challenges faced by Migratory Families

- Physical Hazards
- Isolation
- Family separation
- Socioeconomic Disadvantages
- Language
- Graduation Rates
- Program Support



Challenges faced by Migratory Students

- Poor Attendance
- Lack of Continuity
- High School Credits
- Isolation
- Language
- Anxiety

attendance **MATTERS**



Support Services

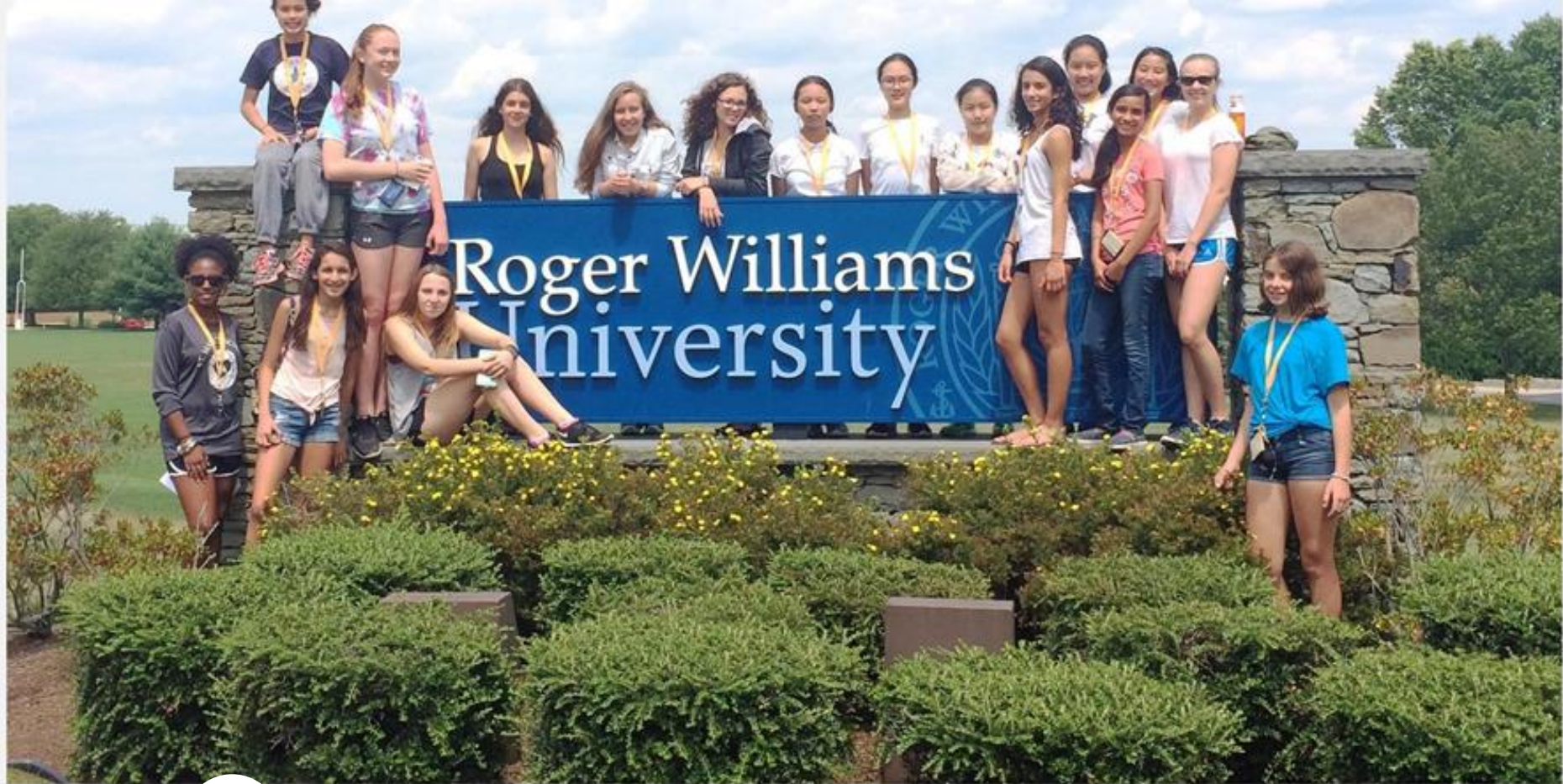
- Guidance/Counseling
- Advocacy
- Support Services
- Referred Services
- Transportation
- Material Resources



Queen Creek District

MEP Preschool Program





**Gadsden
Elementary District**

Summer Program

John Hopkins University/Center of
Talented Youth

Arizona Migrant Education Program

COMMUNITY PARTNERSHIPS

Partnerships



Chicanos Por La Causa, Inc.
A PROMISE OF OPPORTUNITY



Family Engagement

Parental involvement

Section 1304(c)(3) Non-regulatory guidance



- It is a statutory requirement to have a Parent Advisory Council
- Parental involvement in the planning of the program enables parents to understand the program and encourages them to have informed conversations with MEP and school staff about their child's education.
- Meetings times should be at convenient times for parents to attend.
- You can provide, transportation, daycare, and food.
- Materials should be in a language they understand.

CAMP

The College Assistance Migrant Program (CAMP) assists students who are migratory or seasonal farmworkers (or children of such workers) enrolled in their first year of undergraduate studies at an IHE. The funding supports completion of the first year of studies.

- Arizona Western College/Yuma
- ASU/Tempe



Arizona Migrant Education Program

NEXT STEPS

Implementation of a MEP

Phase I

- IDENTIFICATION

Phase II

- PROGRAM START-UP

Phase III

- GROWING THE MIGRANT EDUCATION PROGRAM

Phase I - Identification

- SEA will identify a Regional Recruiter to canvas and recruit in your area.
- Regional Recruiter will work with Registrars to include Occupational Surveys in the Enrollment Packets.
- Regional Recruiter will host informational meetings at school sites.
- Regional Recruiter will work with SEA to track recruitment efforts in the LEA's area.
- Regional Recruiter will work with designated Registrar to obtain required student information.



MIGRANT EDUCATION PROGRAM

PARENT SURVEY

SCHOOL DISTRICT: _____

DATE COMPLETED: _____

OF CHILDREN IN HOUSEHOLD: _____

AGES OF CHILDREN: _____

NAME OF SCHOOL ATTENDED BY CHILD(REN): _____

Please complete this form to determine if your child(ren) may qualify to receive additional services under Title I, Part C, Migrant Education Program.

1. Have your child(ren) been enrolled in the Migrant Education Program in the state of Arizona or any other state? ☐ YES ☐ NO If yes, please indicate the date and state where your child(ren) received services. _____
2. In the last three (3) years has your family made a move to search or work in another city, county or state? ☐ YES ☐ NO If yes, what is the date your family arrived in the city/town you reside in at this time? _____
3. Has anyone in your immediate family worked in one of the occupations listed below, either as a seasonal or temporary (less than 12 months) employee?
Check ALL that apply:
 - ☐ **Agriculture:** planting/picking vegetables/fruits such as tomatoes, lettuce, squash, broccoli, strawberries.
 - ☐ **Planting:** planting seeds, growing or cutting trees, raking pine straw
 - ☐ **Processing/packing agriculture products:** cleaning, weighing, cutting, sorting, freezing, packing
 - ☐ **Dairy/Poultry/Livestock:** herding, handling, feeding, branding, slaughtering, cutting, trimming, deboning
 - ☐ **Meatpacking/Meat processing/Seafood:** skinning, hanging, cutting, trimming, freezing
 - ☐ **Fishing:** scaling, cutting, freezing, dressing, enclosing the raw product in a container
 - ☐ **Other:** Please specify occupation _____

Name of Parent(s) or Legal Guardian(s) _____

Current Address: _____

City/State/Zip: _____

Contact Number: _____

THANK YOU!

PLEASE RETURN THIS FORM TO THE SCHOOL AS SOON AS POSSIBLE



Phase II – Program Startup

- SEA will meet with LEA to discuss recruitment efforts.
- If # of students identified meet the state threshold, the LEA can join a Consortium as a Participant.
- LEA will work with the Consortium Lead to sign a Memorandum of Understanding (MOU).
- The LEA will coordinate with the Consortium Lead to provide instructional and support services.

Phase III – Growing the MEP

- When the LEAs allocation is greater than the required threshold, they can then apply for their own Basic Migrant Education Program Grant.
- The SEA will work with the LEA to structure their program.
- The program will require the LEA staff a full-time Recruiter and a full-time Data Clerk.
- Implementation of an ID&R Plan.

Life of an Arizona Migratory Student



<https://www.youtube.com/watch?v=llHoPh2ODzo&feature=youtu.be>

Questions



Migrant Education Program

Laura Alvarez

MEP State Coordinator

(602)542-7463

Laura.alvarez@azed.gov