



Post School Outcomes Essentials 102



Session Outcomes

- Review updates for the 2020 data collection season
- Discuss recommendations for making the survey a conversation versus a questionnaire
- Share successful strategies from schools across Arizona



Why is PSO Important?

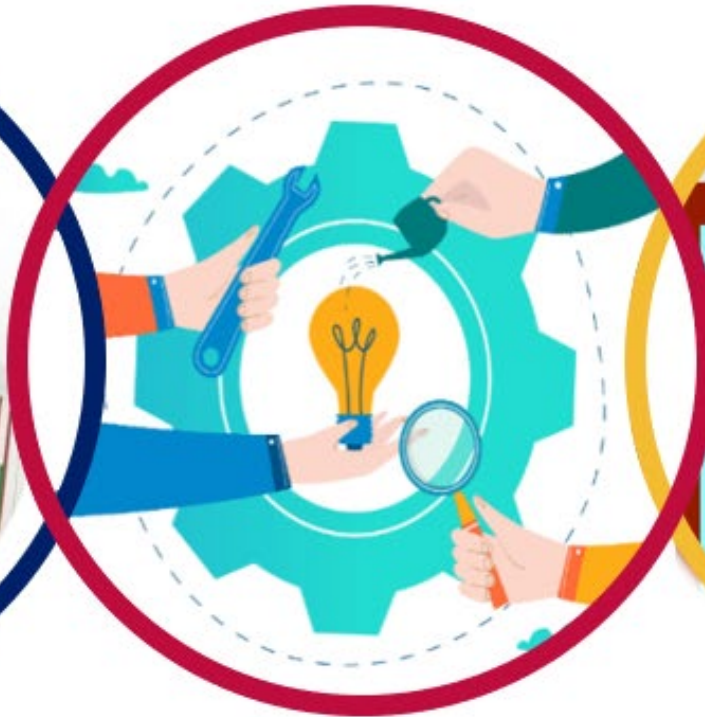
**Federal and Public
Reporting Provisions**



**Successful Transition to Adulthood
For All Students with Disabilities**



**District and Charter School
Improvement Initiatives**



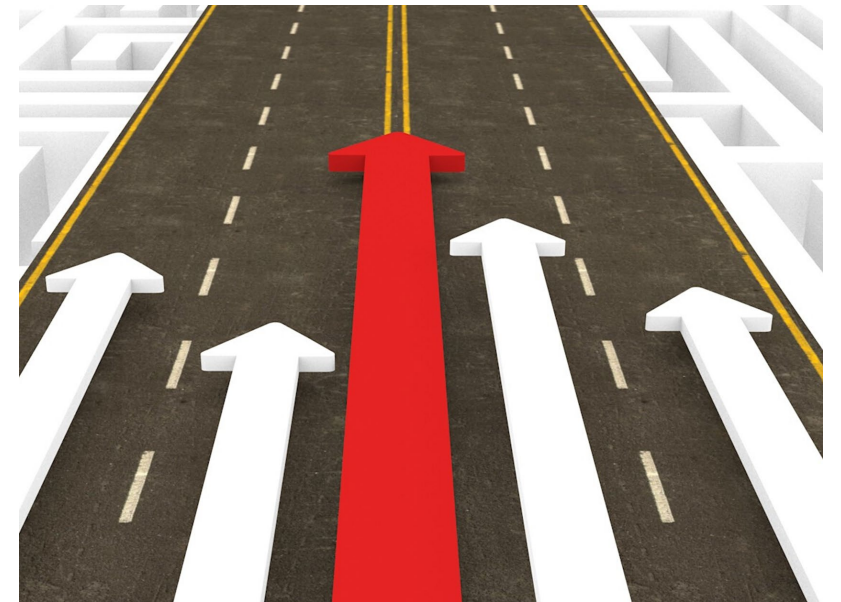
Indicator 14

Measurement of a student's post-school engagement.

Percent of youth who are no longer in secondary school, had IEPs in effect at the time they left school, and were:

- enrolled in higher education;
- competitively employed;
- enrolled in postsecondary education or training; or
- some other employment

within one year of leaving high school.



PSO Updates: What Hasn't Changed?

- Conducting the PSO Survey
- PSO Application on ESS Portal
- Categories of Engagement Definitions



PSO Updates: What's New?

**PSO Application
Features**



**Survey
Questions**



[PSO Survey Hard Copy](#)

**Help
Documents &
Resources**



[PSO Website](#)

How Can We Support You?



PSO Hangouts and Technical Assistance

Targeted PEA and Stakeholder Training

PSO Data-Driven Action Planning

PSO Survey Companion Document



**A conversation
can ensure the
appropriate responses
to the PSO Survey
questions are
accurately identified.**

[PSO Survey Companion Document](#)

[illegible][illegible]

Let's Talk Strategies: Response Rate

A word cloud centered around the word "OUTREACH" in large, dark blue, bold letters. Surrounding it are various strategies and roles in different colors and sizes. The words include: "COMMUNITY AGENCIES" (red, top right), "CONTACT SHEET" (red, top right), "DATA ENTRY DAY" (yellow, top center), "REVIEW QUESTIONS" (red, top left), "PHONE" (blue, top left), "CASE MANAGERS" (red, top left), "SET A GOAL" (yellow, middle left), "ANNOUNCE SURVEY EARLY" (blue, middle left), "NATURAL SUPPORTS" (yellow, bottom left), "SOCIAL MEDIA" (blue, bottom left), "OTHER TEACHERS/STAFF" (blue, bottom left), "FAMILY TEXT" (red, bottom center), "COLLABORATE - VR/DDD" (red, bottom center), "DEVELOP RELATIONSHIPS" (yellow, bottom center), "CREATE FORM" (red, bottom center), "SOP MEETING" (blue, middle right), "EMAIL" (blue, middle right), "INTERPRETERS" (yellow, middle right), and "CONTACT BEFORE JUNE 1ST" (blue, middle right).

OUTREACH

COMMUNITY AGENCIES

CONTACT SHEET

DATA ENTRY DAY

REVIEW QUESTIONS

PHONE

CASE MANAGERS

SET A GOAL

ANNOUNCE SURVEY EARLY

NATURAL SUPPORTS

SOCIAL MEDIA

OTHER TEACHERS/STAFF

FAMILY TEXT

COLLABORATE - VR/DDD

DEVELOP RELATIONSHIPS

CREATE FORM

SOP MEETING

EMAIL

INTERPRETERS

CONTACT BEFORE JUNE 1ST

CONNECT WITH DROP-OUTS EARLY
COMMUNITY ENGAGEMENT

DEVELOP RELATIONSHIPS
CCR TEACHERS/STAFF

INCLUSIVE PRACTICES

SHARE PSO DATA WITH STAFF

DISABILITY AWARENESS

AGENCY COLLABORATION

PRE-ETS WORKSHOPS

**Let's Talk Strategies:
Engagement Rate**

Discussion:

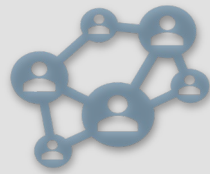
What Works in Your District?



How does your PEA prepare for the data collection season?



What resources or tools do you use to reach former students?



How does your PEA support student engagement?



What are your success stories?

Enhance Your Students' Success!

PSO gives us opportunities to reconnect with former students and helps us know how we can better prepare students for the future.



[This Photo](#) by Unknown Author is licensed under [CC BY-NC-ND](#)



[This Photo](#) by Unknown Author is licensed under [CC BY-ND](#)

ADE-Exceptional Student Services (ESS)

- [PSO Website](#)
- [Secondary Transition Resources Padlet](#)
- [PSO Survey Companion Document](#)

National Technical Assistance Center of Transition (NTACT)

- [Post-School Success](#)
- [Toolkits](#)
- [Effective Practices in Secondary Transition: Operational Definitions](#)

Office of Special Education Programs (OSEP)

- [Grads360°](#)



Contact Information



Sam Klein

Secondary Transition Specialist
sam.klein@azed.gov
(520) 770-3363



Lisa Livesay

Secondary Transition Specialist
lisa.livesay@azed.gov
(602) 364-4015



Antony Redmon

Program Project Specialist
antony.redmon@azed.gov
(602) 542-2817

Arizona Department of Education
Exceptional Student Services, Secondary Transition Team
<https://www.azed.gov/specialeducation/transition>

**PSO Questions
and Support:**
psoinbox@azed.gov