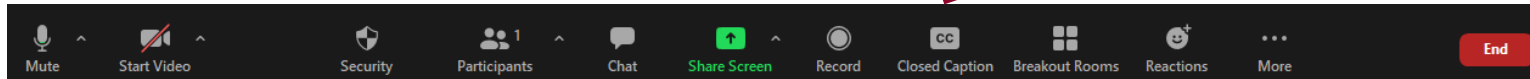




Special Education Data Updates

Before we get started, here are a few reminders.

- To enable Zoom closed captions, click on the “Closed Caption” button shown here.



- Please stay muted throughout the presentation.
- Please keep all questions relevant to the topic discussed during the presentation. There will be a Q&A session at the end for general questions.
- This webinar will be recorded and posted on our Data Management website.
- Please use our Survey link to complete our survey to give us ideas for future discussion topics and let us know how we’re doing.

Special Education Data Updates 11/17/21

- **Reminders with Eric Ashenfelter**
 - ESS October 1 Data Collection Phase I due today by 5pm
 - Data Management overview video
- **Trending Topics with Adam Zogut**
 - ESS October 1 Data Collection Phase II
- **Per Your Request with Kristin Merritt and Louie Reyes**
 - Private Day School and RTC Home School District reporting responsibilities
 - Preschool LRE Code review
- **Q&A**



Special Education Data Updates

Reminders

Presented by: Eric Ashenfelter

Reminders

ESS October 1 Data Collection

ESS October 1 Data Collection Phase I is due today (11/17/21) by 5pm

- Includes:
 - Verification Count
 - Personnel Count
 - Parentally Placed Count (Public School Districts only)

Data must be entered and signed by the LEA Signer by 5pm.

Instructions for LEA Signer are on page 9 of the [ESS October 1 Data Collection Technical Assistance Manual](#).

- Manual can be found on the [ESS Data Management October 1 Data Collection webpage](#)

Reminders

ESS Data Management Overview Video

PEA SPED staff new to their position should review the ESS Data Management Overview Video for awareness of data collection requirements.

Video link can be found on our [ESS Data Management homepage](#).



The ESS Data Management (DM) team is responsible for the collection, review, validation, verification and analysis of Special Education Data in Arizona as required under Section 618 of the Individuals with Disabilities Education Act (IDEA).



▼ ESS Data Management

- [Introduction to DM](#)
- [FY22 Overview Video](#)
- [FY22 Overview Slides](#)
- [FY22 Data Reporting Updates](#)
- [Glossary of Acronyms and Terms](#)





SPECIAL EDUCATION DATA UPDATES

Trending Topics

October 1 Data Collection: Phase II

Phase I

Phase II

Phase III

- Reconciliation begins
- SPED data corrections due 12/15 in AzEDS by 5pm
- SPED07 report available
- Utilize AzEDS reports
- [SPED Integrity Rules Reference Document](#)

October 1 Data Collection: Phase II

AzEDS Reports

- **SPED07 Report**

- Post-integrity report of SPED students served over October 1. Available after verification count due date and used for reconciliation. Updated: Daily after integrity processing.

- **SPED72 Report**

- SPED Participation Report filtered by DOA or DOR - View student's SPED need(s) and Least Restrictive Environment (LRE), post-integrity. Details if student is passing/failing SPED/Fed SPED Integrity. Updated: Daily after integrity processing.

- **SPED73 Report**

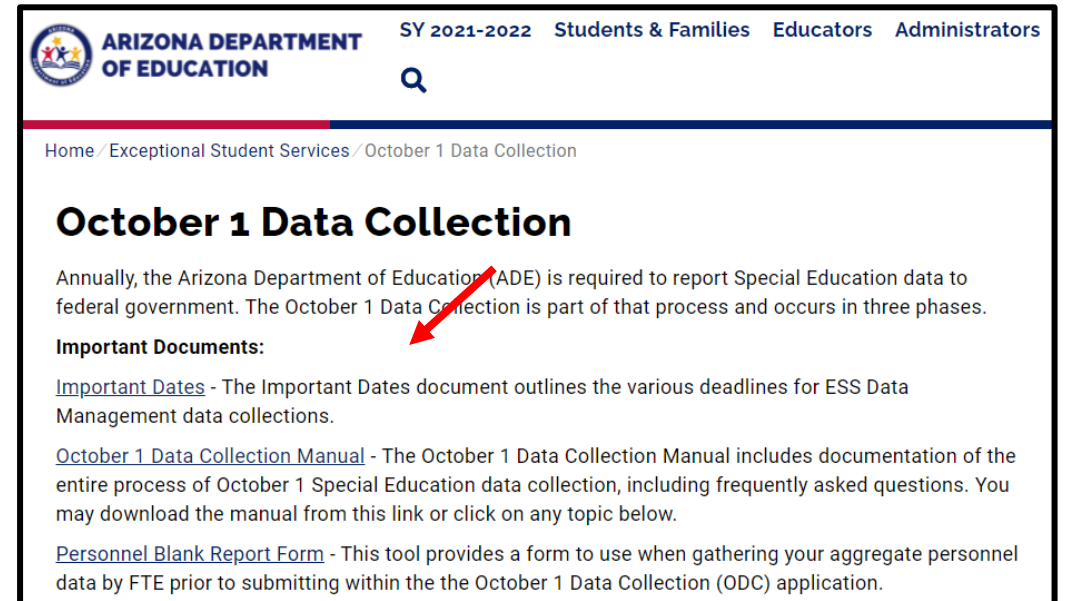
- October 1 FED SPED Report filtered by DOA or DOR - Verify SPED students served on October 1 for Census. Students are categorized in three sections: Included in October 1 count, excluded due to failing FED SPED and/or Membership Integrity, and unknown error pool. Updated: Daily after integrity processing.

INTEG15 Report

- Student Data Integrity Report - View students failing integrity, details error and message. To view SPED students, select Integrity Categories: SPED & Fed SPED. Updated: Daily (6PM - 9PM).

October 1 Data Collection: Phase II Resources

- [ODC Technical Assistance Manual](#)
 - Includes documentation of the entire process of ODC, including frequently asked questions.
 - Located on ESS DM ODC Homepage.
- **Training Videos**
 - [FY21 Phase II Reconciliation](#)
 - [FY22 Phase II Reconciliation \(Case Study\)](#)



ARIZONA DEPARTMENT OF EDUCATION SY 2021-2022 Students & Families Educators Administrators

Home / Exceptional Student Services / October 1 Data Collection

October 1 Data Collection

Annually, the Arizona Department of Education (ADE) is required to report Special Education data to federal government. The October 1 Data Collection is part of that process and occurs in three phases.

Important Documents:

- [Important Dates](#) - The Important Dates document outlines the various deadlines for ESS Data Management data collections.
- [October 1 Data Collection Manual](#) - The October 1 Data Collection Manual includes documentation of the entire process of October 1 Special Education data collection, including frequently asked questions. You may download the manual from this link or click on any topic below.
- [Personnel Blank Report Form](#) - This tool provides a form to use when gathering your aggregate personnel data by FTE prior to submitting within the the October 1 Data Collection (ODC) application.



SPECIAL EDUCATION DATA UPDATES

Per your Request

**Reporting students at a Residential Treatment Center
(RTC) or an Approved Private Day School**

Per Your Request

Residential Treatment Centers and Private Day Schools

1. Student is placed in either a Residential Treatment Center or an Approved Private Day School
2. Ensure a reporting relationship in AzEDS for the site
3. Submit a calendar for the site via the SIS using a posted template
4. Submit Enrollment and SPED data for student

Per Your Request

Residential Treatment Centers and Private Day Schools

Establish a reporting relationship:

E-mail ESS Data management: EssDataMgmt@azed.gov

Let us know that you need a reporting relationship between your PEA and the RTC or Approved Private Day School

Per Your Request

Residential Treatment Centers and Private Day Schools

Add a calendar:

Information on Private Day Schools, including calendars are listed here:

<https://www.azed.gov/specialeducation/private-special-education-schools>

Information on Residential Treatment Centers, including calendars are listed here:

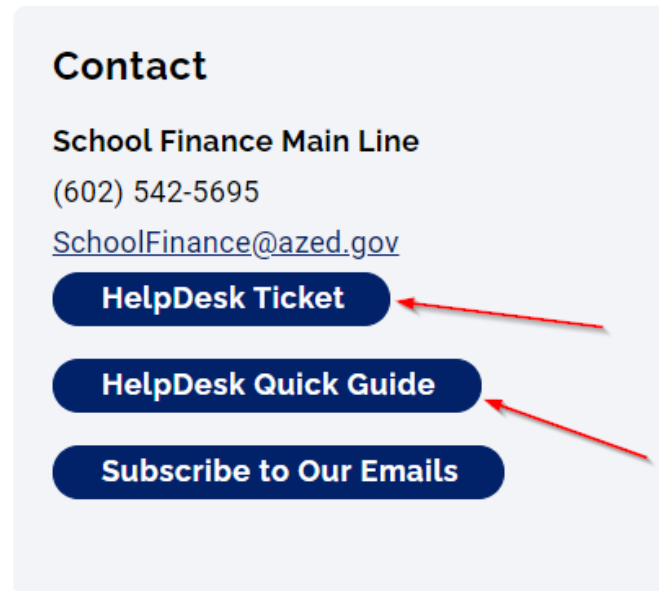
<https://www.azed.gov/specialeducation/rtc-placement>

Per Your Request

Residential Treatment Centers and Private Day Schools

Add a calendar:

Submit a calendar at the beginning of the school year or contact School Finance to open a calendar submission window for your PEA. <https://www.azed.gov/finance>



Contact

School Finance Main Line
(602) 542-5695
SchoolFinance@azed.gov

HelpDesk Ticket

HelpDesk Quick Guide

Subscribe to Our Emails

Per Your Request

Residential Treatment Centers and Private Day Schools

- PEA's will report themselves as the District of Residence
 - RTC's and Private Day Schools do not report student data
- AzEDS reporting should be the RTC or Private Day School site
 - Resident School ID should be the site the student would normally attend in your PEA if not placed.
- Report the correct Tuition Payer Code
 - RTC: Tuition Payer Code 7
 - Private Day School: Tuition Payer Code 1
- Contact Vouchers at VouchersUnit@azed.gov with any questions about voucher status.

Per your Request

Residential Treatment Center and Private Day School Reporting

Initial Enrollment	IEP Determination	Voucher Status	Who Reports	Resident School ID	Tuition Payer Code
Public School	Placement in RTC by IEP team or State Placement Agency (SPA)	District or Charter approves voucher	District of Residence	The school site the student would have normally attended if not placed	TP 7
Public School	Placement in Private Day School by IEP team	No Voucher	District of Residence	The school site the student would have normally attended if not placed	TP 1

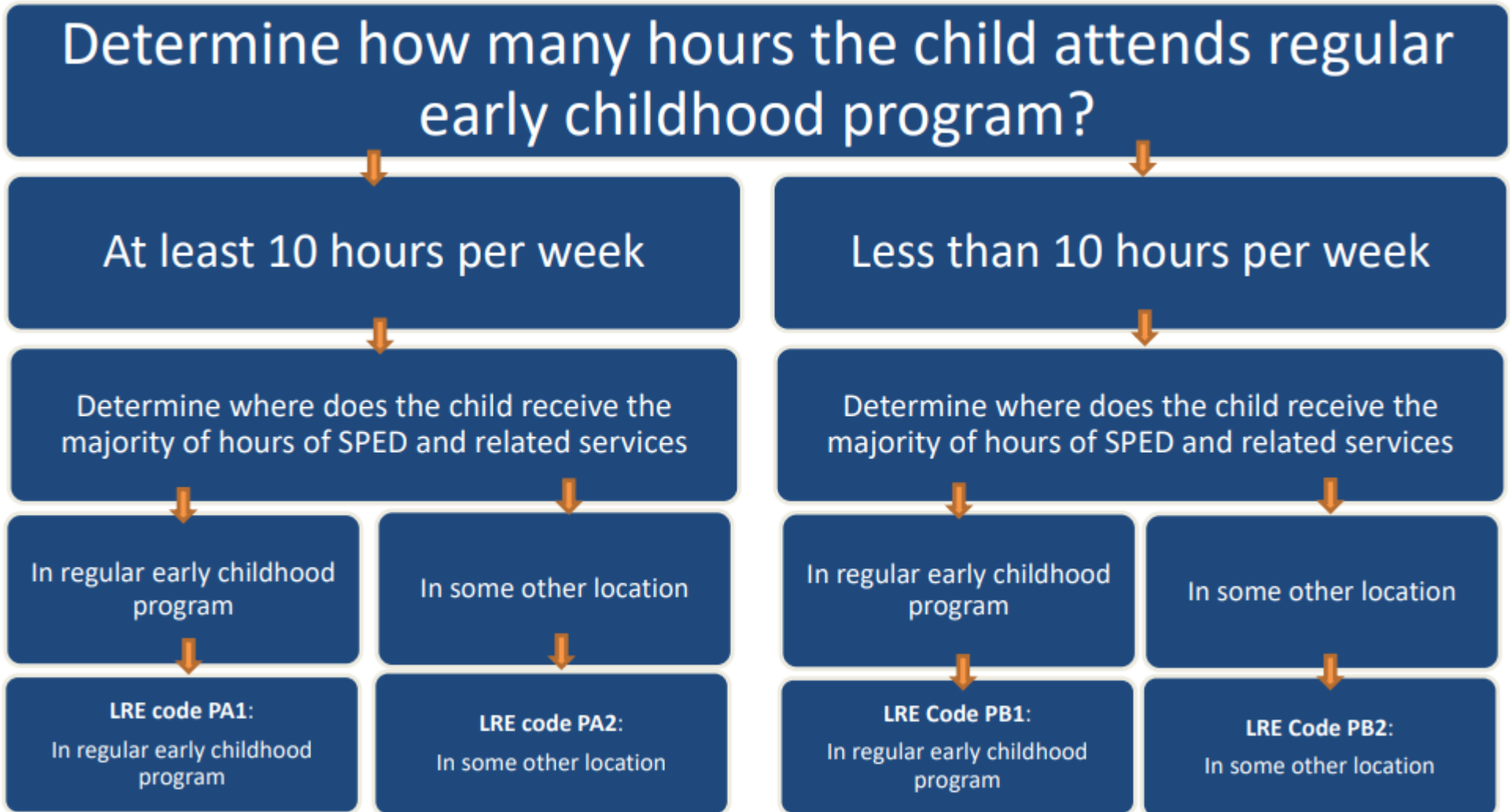


SPECIAL EDUCATION DATA UPDATES

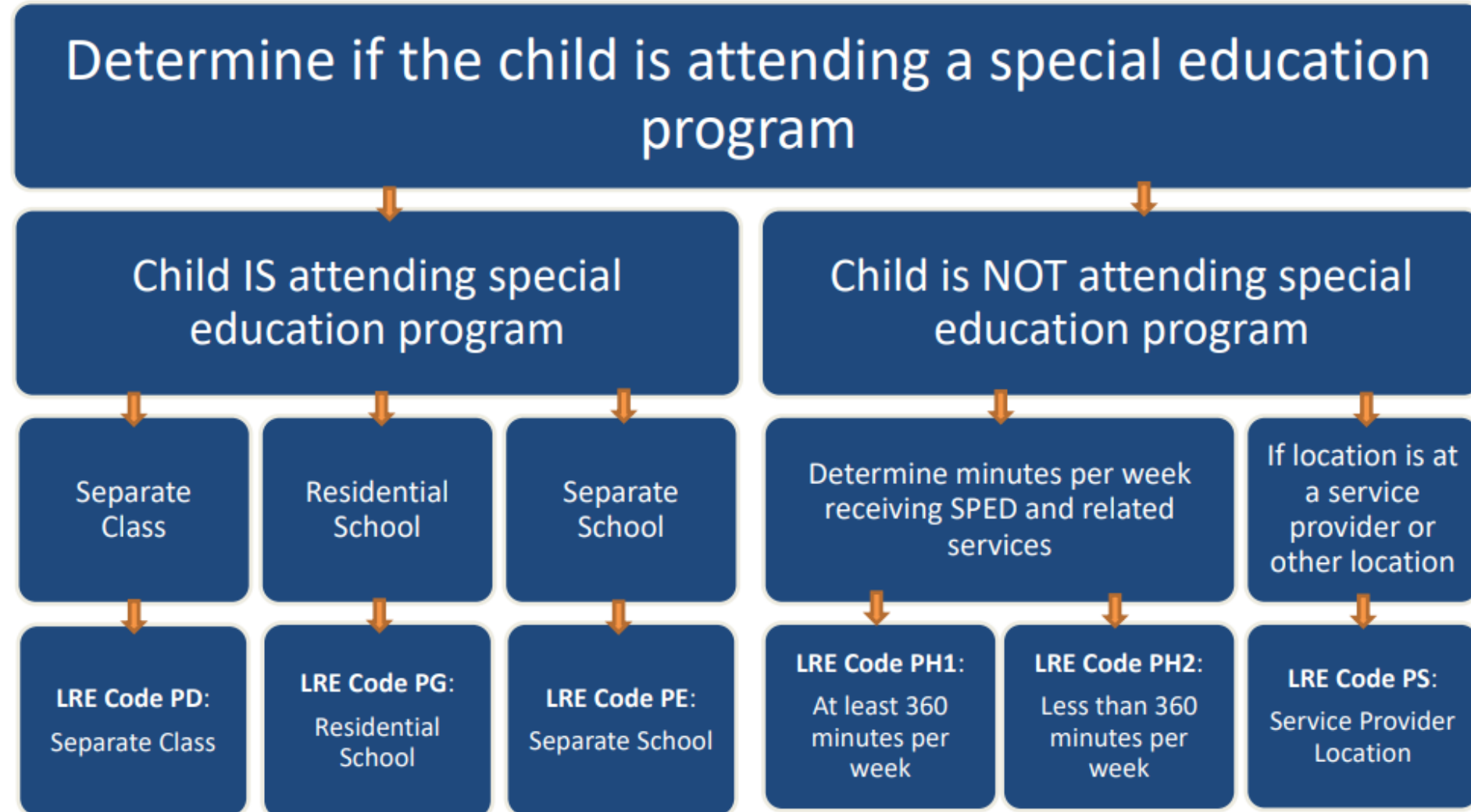
Per your Request

How to Determine Preschool LRE Codes

Preschool LRE Decision Tree for Children Attending Early Childhood Program



Preschool LRE Decision Tree for Children Not Attending Early Childhood Program



LRE CODE Resources

- **LRE Decision Tree Documents**
 - [Attending Early Childhood Program](#)
 - [Not attending Early Childhood Program](#)
- **AzEDS LRE SPED Codes Descriptions**
 - [AzEDS SPED Codes Document](#)

Q&A

Upcoming Integrity Rule -10138

A new integrity rule for FY 2022 will be introduced into the integrity process on SPED data shortly.

[Integrity Rule -10138](#)

This rule will validate any students enrolled at an approved Private Day School to have a corresponding SPED Least Restrictive Environment (LRE) reported for all dates of the enrollment.

This rule will fail if all dates of the Private Day School enrollment do not have a corresponding SPED LRE reported.


A list of approved Private Day Schools can be found on the [Private Special Education Schools](#) webpage.

ESS Data Management Support & Resources

 **Subscribe to ESS Data Management Alerts**
<http://bit.ly/essdmalerts>

 **Subscribe to ESS Data Management YouTube Channel**
<https://bit.ly/essdmyoutube>

ESS Data Management:

 **(602) 542-3962**

 **ESSDataMgmt@azed.gov**

Chris Brown

Peggy Staples

Eric Ashenfelter

Maria Durazo

Kristin Merritt

Adam Zogut

Louie Reyes

Director of Operations

Lead Data Management Specialist

Program and Business Liaison

Data Management Specialist

Data Management Specialist

Data Management Specialist

Data Management Specialist

Chris.Brown@azed.gov

Peggy.Staples@azed.gov

Eric.Ashenfelter@azed.gov

Maria.Durazo@azed.gov

Kristin.Merritt@azed.gov

Adam.Zogut@azed.gov

Louie.Reyes@azed.gov