



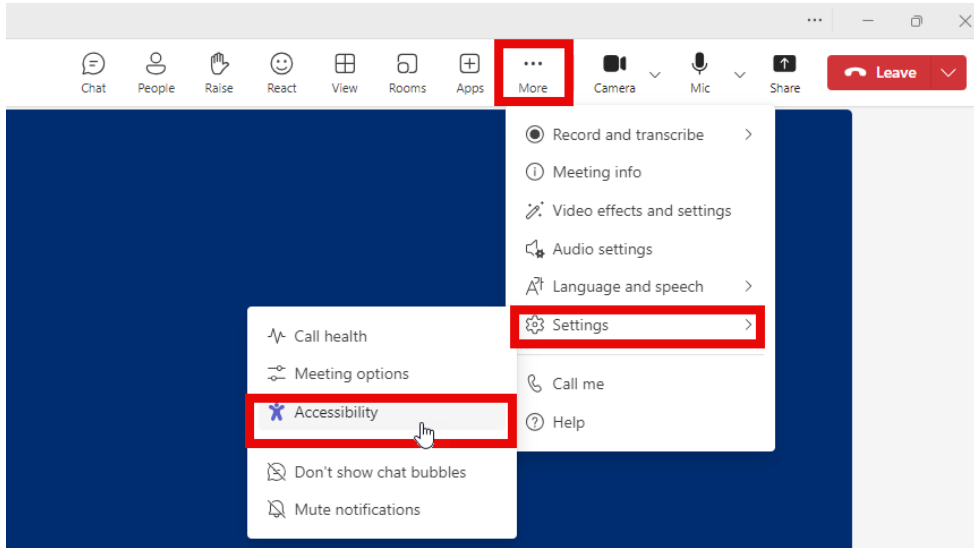
ARIZONA DEPARTMENT OF
EDUCATION

Special Education Data Updates

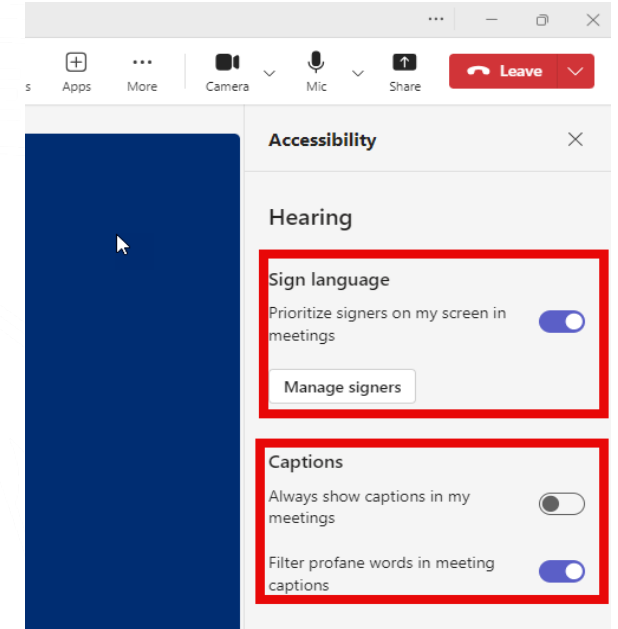
ESS Data Management
November 2025

Before we get started, here are a few reminders:

To use live captions in Teams, go to the meeting controls at the top of the screen and select More > Settings > Accessibility



In the Accessibility options, you can manage how you view the signers (interpreters), if applicable, and turn on captions



- ~~Please stay muted throughout the presentation~~
- There will be a Q&A session at the end
- We will post this webinar recording on the [ESS Data Management webpage](#)

The use of AI meeting assistants, such as Otter.ai and Chorus.ai, that record audio of the meeting, write notes, capture action items, and generate meeting summaries for virtual meetings is prohibited.

Agenda

- Reminders
- Q&A

Special Education Data Updates

Reminders



What You Need to Know

- Recording: October 1 Data Collection Phase
2 Reconciliation Training
- October 1 Data Reconciliation due
December 10, 2025
- Special SEDU with School Finance
 - December 2, 2025, at 2:00 PM
 - [Registration Link](#)

Special Education Data Updates

Q&A



Q&A

- General Questions
- Troubleshooting with AzEDS
- NO Personally Identifiable Information (PII)
 - SSID investigation assistance?
 - Email the [Data Management Inbox](#)
- Ask Us!

ADEConnect Support

(602) 542-7378

ESS Data Management Inbox

(602) 542-3962

Subscribe to stay informed:

Data Management Alerts

Data Management Vimeo Channel

Next SEDU Webinar: December 2, 2025,
with School Finance

Thank You!

